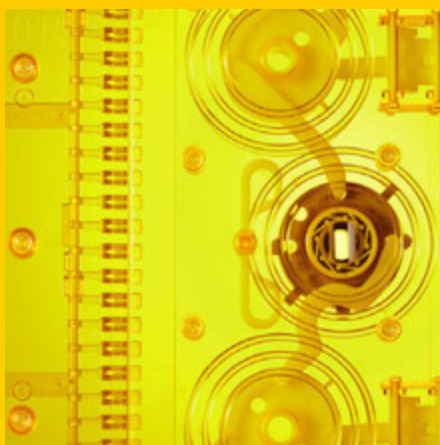


# Wafer-related Product General Catalog



01 FOUP/Carriers/Handles

02 Box

03 RSP

04 Mask Case

05 Chip Tray

06 Other Products

07 Technical Information

# Contents

## Wafer-related Product General Catalog

<b>Introduction</b>	<b>001 ~ 004</b>
Dear Customer/Overseas Agent	002
Materials and Products	003

<b>FOUP/Carriers/Handles</b>	<b>005 ~ 072</b>
Wafer Carrier General Terminology and Definitions	006
Carrier Ordering Information	007
450mm Wafer Open Cassette	008
300mm Wafer Open Cassette	009
Open Cassette Storage Box	012
FOUP	013
200mm Wafer Carrier	014
150mm Wafer Carrier	029
125mm Wafer Carrier	049
100mm Wafer Carrier	060
75mm Wafer Carrier	067
75/55mm Wafer Carrier	068
50mm Wafer Carrier	069
200/150mm Wafer Carrier Handle	070
125/100mm Wafer Carrier Handle	071

<b>Boxes</b>	<b>073 ~ 081</b>
Box Ordering Information	074
200mm Wafer Carrier Storage Box	075
150mm Wafer Carrier Storage Box	077
125mm Wafer Carrier Storage Box	080
100mm Wafer Carrier Storage Box	081
Multi Wafer Carrier Storage Box	081

<b>RSP</b>	<b>083 ~ 085</b>
RSP-150	084
RSP-200	085

<b>Mask Cases</b>	<b>087 ~ 092</b>
Mask Case Ordering Information	088
MP/MR Series	089
MP Series	090~092
PL Series	092

<b>Chip Trays</b>	<b>093 ~ 108</b>
Chip Tray Assortment	094
Chip Tray Ordering Information	095
CT50 Series Chip Tray (square)	096
CT50R Series Chip Tray (square)	097
CT50 Series Chip Tray (rectangular)	099
CT50R Series Chip Tray (rectangular)	100
Cover/Antistatic Film for CT50/CT50R	102
Clip for CT50/CT50R	103
Box for CT50/CT50R	104
CT100/CT100R Series Chip Tray (square)	105
CT100/CT100R Series Chip Tray (rectangular)	106
Cover/Antistatic Film for CT100/CT100R	107
Clip for CT100/CT100R	108

<b>Other Products</b>	<b>109 ~ 121</b>
Minimal Shuttle	110
Carrier for 125/80mm Square Substrate	111
Carrier for 156/125mm Square Substrate	112
Assembly Carrier/Side Rail for Square Substrate	113
Wafer Shipper	114
Box for Wafer with Guide-Ring	115
300/200mm Wafer Tray	116
75mm Wafer Tray	117
Accessories	118~121

<b>Technical Information</b>	<b>123 ~ 129</b>
General Properties of Resins Used in Daiichi Products	124
Physical Properties of Materials	127
Physical Properties of Fluorocarbon Resins	128

# Dear Customer

DAINICHI SHOJI K.K.

In February 1997, we built our own injection molding factory in Yonezawa-shi, Yamagata Prefecture to promptly respond to the customer's requirement.

To meet customer's needs, now, we have a variety of carriers (cassettes) in each size for 50mm - 450mm semiconductor wafer process.

Wafer carrier has its own feature and purpose, and can be selected according to customer's application respectively.

As well as the dedicated handle and storage box, various other accessories are available.

We are sure we will be able to be of service to you to increase yield.

We are trying to provide highly reliable information and careful service with sales offices throughout the country.

## Overseas Agent

Represented by:

	<b>CCT Europe B.V.</b>  Bindersestraat 31-D, 5701SX Helmond, The Netherlands. ✉ <a href="mailto:cct@cct-europe.com">cct@cct-europe.com</a> ☎ +31 (0)492 780178 🌐 <a href="http://www.cct-europe.com">www.cct-europe.com</a>
---	--

# Materials and Products

DAINICHI SHOJI K.K.

## Crystalline polymer

Hard and superior in rigidity (resistivity to bending and distortion) and elasticity.

## Amorphous polymer

Superior in impact resistance and weather resistance. Suitable for structural part with less warp and sink mark.

### General Purpose Plastic

#### Polypropylene (P125)

- Wafer Carrier
- Wafer Carrier Storage Box
- Chip Tray

#### ABS (P125)

- Chip Tray

#### Stat Free-2 (P126)

- Wafer Carrier Storage Box
- Mask Case
- Chip Tray

### Engineering Plastic

#### Stat Free-1 (P126)

- Wafer Carrier
- Wafer Carrier Storage Box

#### Conductive Polycarbonate (P126)

- Wafer Carrier
- Wafer Carrier Storage Box
- RSP
- Mask Case
- Chip Tray

### Super Engineering Plastic

#### PFA (P124)

- Wafer Carrier
- Carrier Handle

#### PEEK (P124)

- Wafer Carrier

#### Bishop-3 (P126)

- Wafer Carrier

#### PES (P124)

- Wafer Carrier

FOUP  
Carriers  
Handles

Box

RSP

Mask  
Case

Chip  
Tray

Other  
Products

Technical  
Info

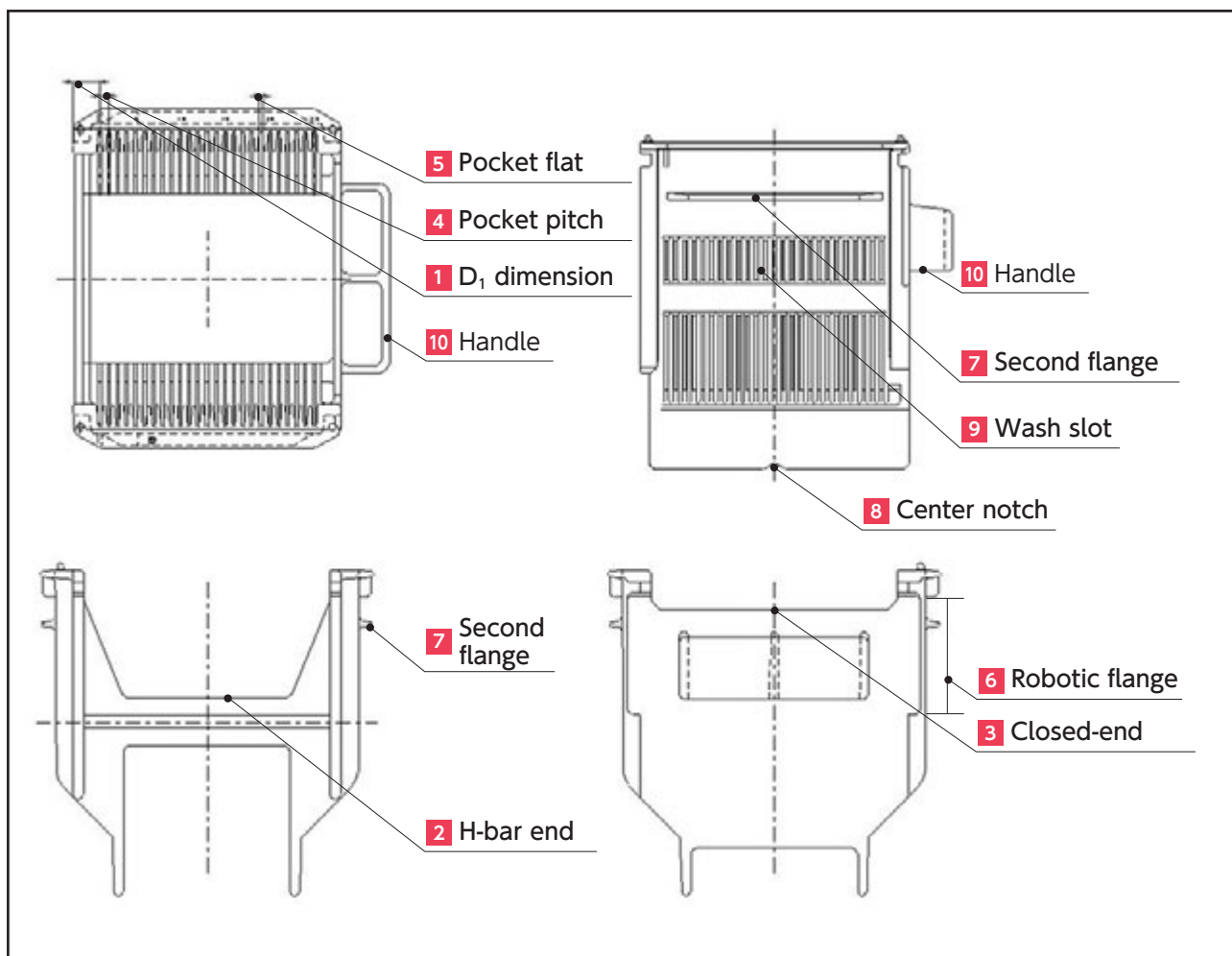
# FOUP/Carriers/Handles



# Wafer Carrier General Terminology and Definitions

DAINICHI SHOJI K.K.

Respective part of wafer carrier has its own unique name.  
Please confirm by the below illustration.



- 1** D<sub>1</sub> dimension : Distance from the H-bar end surface to the center of the first pocket (SEMI Standard).
- 2** H-bar end : H-shaped end wall for equipment interface.
- 3** Closed-end : End wall opposite to H-bar end.
- 4** Pocket pitch : Distance from the center of the pocket flat to the center of the next pocket flat.
- 5** Pocket flat : Width of the pocket at its narrowest distance.
- 6** Robotic flange : Protrusions on the end wall for a robot arm to grip a carrier.
- 7** Second flange : Protrusions on the sidewall, perpendicular to the sidewalls (Reinforcement flange).
- 8** Center notch : Triangular serration on the carrier track for accurate carrier registration.
- 9** Wash slot : Windows provided in the sidewalls to improve cleaning and drying effect (Open window).
- 10** Handle : Handle on the end wall for manual handling.



# Carrier Ordering Information

DAINICHI SHOJI K.K.

The following ordering policy applies to order for carriers.

Please contact us for an order for less than Minimum Order Quantity or non-standard colors.

## ■ Carrier

Material	Minimum Order Quantity	Standard Colors
Bishop-3 (conductive high performance resin)	100	Black
Stat Free-1 (antistatic PBT alloy)	100	Natural
PFA	50	Natural
antistatic Polypropylene	100	Natural

※ Please confirm prior to use as to compatible box.

# CR450A-01-C001-PC



CR450A-01-C001-PC (With retainer)



CR450A-01-C002-PC (Without retainer)



Kinematic coupling side



Automation flange side



Sidewall (With wash slots)



Retainer (Optional, With or Without)

Part No.	CR450A-01-C001-PC (With retainer)
	CR450A-01-C002-PC (Without retainer)
Capacity	25 (φ 450mm wafer)
Dimension	520mm × 402mm × 482mm
Pocket pitch	12mm
Pocket flat	4mm

- SEMI Standard compliant (E158).
- Selected material is superior in rigidity and low outgassing.
- Wash slots in sidewalls to improve cleaning, draining and drying effect.
- Retainer (Wafer creep-out prevention) with lock mechanism is detachable.
- Kinematic coupling is detachable (Optional).



# CR300L-01LF



CR300L-01LF

Capacity	25
Dimension	350mm × 217mm × 260mm
Z <sub>1</sub> dimension	25mm
Pocket pitch	7mm
Pocket flat	2mm
Compatible box	BX300-01PC

- Dedicated adapter for kinematic coupling to load on the stage compliant with SEMI Standard. But the wafer pitch is different from SEMI standard. Please contact us for the appearance dimension drawing and confirm before using.
- Possible to spin-dry with spin dryer.
- Wafer is largely exposed due to being low-profile to improve cleaning and drying effect.
- Enhanced stability for horizontal wafer handling.

# CR300U-02LM-R



CR300U-02LM-R

Capacity	25
Dimension	332mm × 310mm × 300mm
Pocket pitch	10mm
Compatible box	BX300-01PC
Compatible handle	CH300-01

- SEMI Standard compliant (E19, E57).
- Selected material is superior in high dimensional accuracy, rigidity, low outgassing, low abrasiveness and heat resistance.
- Structure comprised of protrusion to prevent wafer creep-out.
- Dedicated handle CH300-01 (P118) can be attached.

## CR300U-07-01-PC



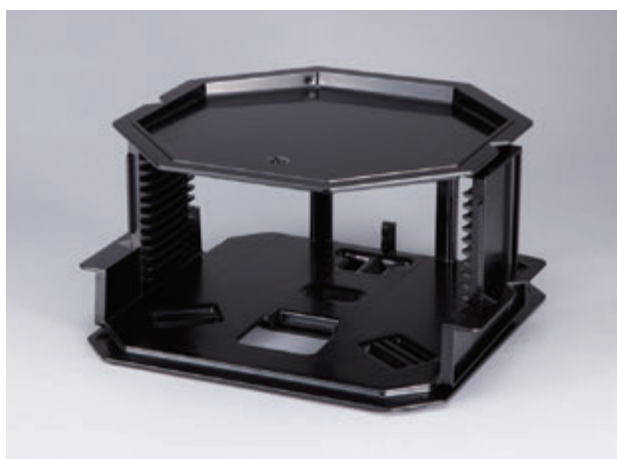
CR300U-07-01-PC

Capacity	13
Dimension	325mm × 307mm × 183mm
Pocket pitch	10mm
Material	Polycarbonate



- SEMI Standard compliant (E19, E57).
- Selected material is superior in high dimensional accuracy, rigidity, low outgassing, low abrasiveness.

## CR300U-03RF-B3NT



CR300U-03RF-B3NT

Capacity	13
Dimension	330mm × 330mm × 186mm
Pocket pitch	10mm



- SEMI Standard compliant (E19, E57), partly not compliant.
- Selected material is superior in high dimensional accuracy, rigidity, low outgassing, low abrasiveness, heat resistance, antistatic performance.
- Structure comprised of protrusion to prevent wafer creep-out.

# BX300-01PC



BX300-01PC

Dimension	420mm × 420mm × 370mm
Material	Polycarbonate

- Accommodates one CR300L-01LF (P9) PFA wafer process cassette or one CR300U-02LM-R (P10) wafer transport open cassette. Especially, accommodates CR300U-02LM-R (P10) open cassette with wafers positioned horizontally or vertically.
- Accommodates CR300U-02LM-R (P10) wafer transport cassette at a 5° angle from wafers horizontal. This cassette orientation causes all wafers to rest inside the cassette.
- Material is clear polycarbonate manufactured by a proprietary technology to control outgassing, which allows barcode viewing without opening packages.
- Two latches securely hold the box top and bottom.

# SF300-02



SF300-02

Capacity	25
Dimension	452mm × 353mm × 300mm
Pocket pitch	10mm

- SEMI Standard compliant (E47.1, E19, E57, E62).
- Basic design to attain low particle generation and superior sealability.
- Highly precise construction for interoperability.
- Selected materials reduce outgas and moisture absorption.
- ESD safe wafer supports, robotic flange and kinematic grooves.

## Option

- (1) UV protection
- (2) Side rail
- (3) Carrier ID (RF-ID/Barcode, etc)
- (4) Info Pad(A,B,C,D)
- (5) Card holder

# CR200G-01LF PFA



CR200G-01LF

Capacity	25
Dimension	234mm × 203mm × 219mm
D <sub>1</sub> dimension	25.4mm
Pocket pitch	6.35mm
Pocket flat	1.8mm
Compatible box	BX200-01 • BX200-02 • BX200DS • BX200H
Compatible handle	CH8-3L

- H-shaped end for equipment interface.
- Solid end wall.
- Wash slots in sidewalls to improve cleaning, draining and drying effect.



# CR200G-01LF-1H PFA



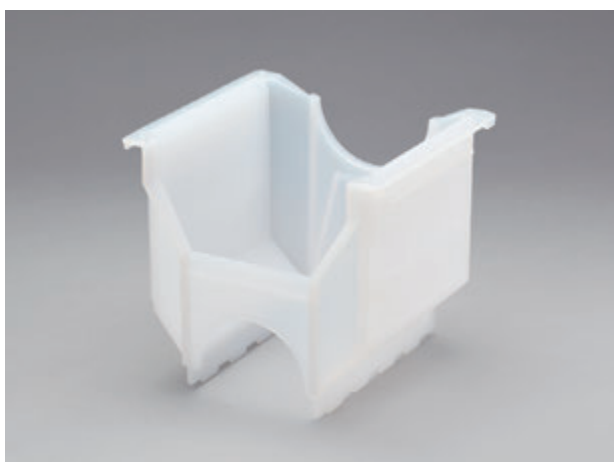
CR200G-01LF-1H



Capacity	25
Dimension	234mm × 203mm × 219mm
D <sub>1</sub> dimension	25.4mm
Pocket pitch	6.35mm
Pocket flat	1.8mm
Compatible box	BX200-01 • BX200-02 • BX200DS
Compatible handle	CH8-3L

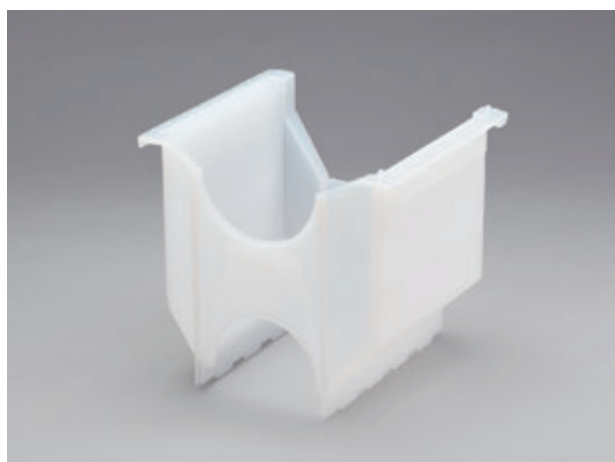
- H-shaped end for equipment interface.
- E-shaped handle on the end wall.
- Wash slots in sidewalls to improve cleaning, draining and drying effect.

## CR200A-AMF PFA



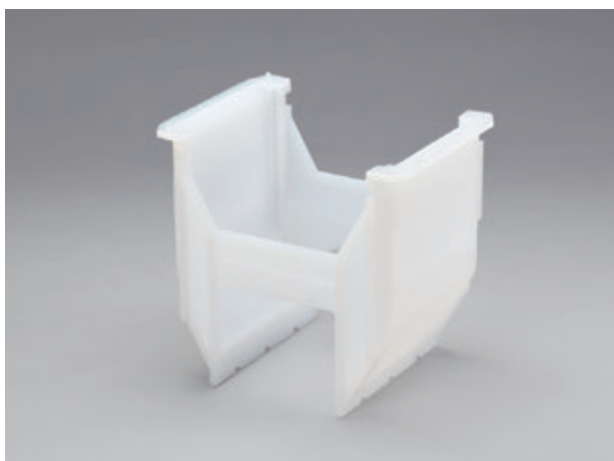
CR200A-AMF

Capacity	26
Dimension	235mm × 208mm × 215mm
D <sub>1</sub> dimension	25.4mm
Pocket pitch	6.35mm
Pocket flat	2.0mm
Compatible box	BX200H
Compatible handle	CH200-HP



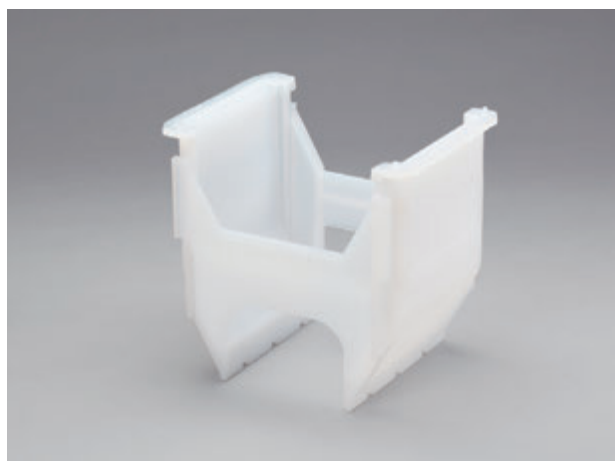
- H-shaped end for equipment interface.
- U-shaped end wall.
- Wash slots in sidewalls to improve cleaning, draining and drying effect.

## CR200A-BMF PFA



CR200A-BMF

Capacity	20
Dimension	235mm × 171mm × 219mm
D <sub>1</sub> dimension	25.4mm
Pocket pitch	6.35mm
Pocket flat	1.8mm
Compatible box	BX200-02 • BX200-12-C007 • BX200H
Compatible handle	CH8-3



- H-shaped end for equipment interface.
- U-shaped end wall.
- Wash slots in sidewalls to improve cleaning, draining and drying effect.

# CR200L-ALF PFA



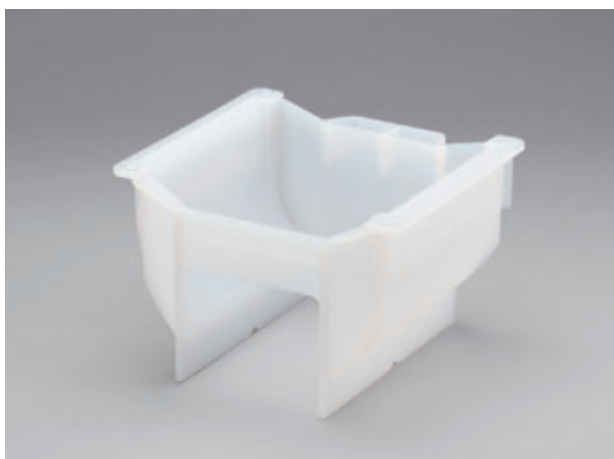
CR200L-ALF



Capacity	26
Dimension	234mm × 210mm × 156mm
D <sub>1</sub> dimension	25.4mm
Pocket pitch	6.35mm
Pocket flat	1.65mm
Compatible box	BX200H
Compatible handle	CH200-HP

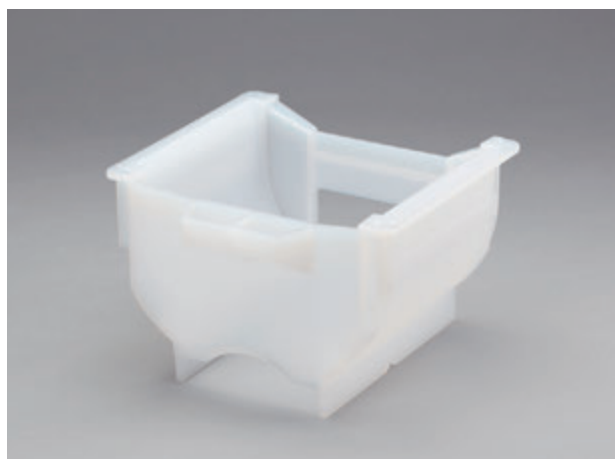
- H-shaped end for equipment interface.
- E-shaped handle on end wall.
- Wide openings to improve cleaning, draining and drying effect.

## CR200L-01LF-H PFA



CR200L-01LF-H

Capacity	25
Dimension	234mm × 203mm × 156mm
D <sub>1</sub> dimension	25.4mm
Pocket pitch	6.35mm
Pocket flat	1.8mm
Compatible box	BX200-01 • BX200-02 • BX200DS • BX200H
Compatible handle	CH200-HP



- H-shaped end for equipment interface.
- E-shaped handle on end wall.
- Wide openings to improve cleaning, draining and drying effect.

## CR200L-04-02H-MF PFA



CR200L-04-02H-MF

Capacity	50
Dimension	234mm × 203mm × 154mm
D <sub>1</sub> dimension	23.81mm
Pocket pitch	3.175mm
Pocket flat	1.15mm



- H-shaped end for equipment interface.
- E-shaped handle on end wall.
- Wide openings to improve cleaning, draining and drying effect.
- Half-pitch type to accommodate 50 wafers.

# CR200A-02B3-H Bishop-3 (conductive high performance resin)

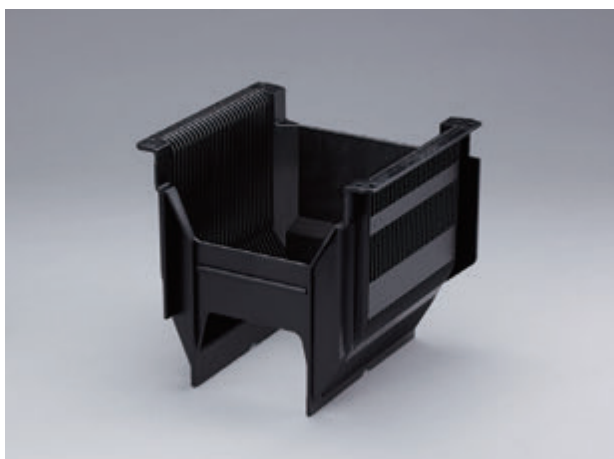


CR200A-02B3-H

Capacity	25
Dimension	234mm × 203mm × 219mm
D <sub>1</sub> dimension	25.4mm
Pocket pitch	6.35mm
Pocket flat	2.0mm
Compatible box	BX200-01 • BX200-02 • BX200DS • BX200-12-C007 • BX200H

- H-shaped end for equipment interface.
- E-shaped handle on end wall .
- Wash slots in sidewalls.
- Excellent heat resistance and rigidity. Ideal for use in high temperature applications such as wafer baking, diffusion and CVD.
- Enhanced stability for horizontal wafer handling.

## CR200F-09-01C-B3NT PEI+CNT (conductive high performance resin)



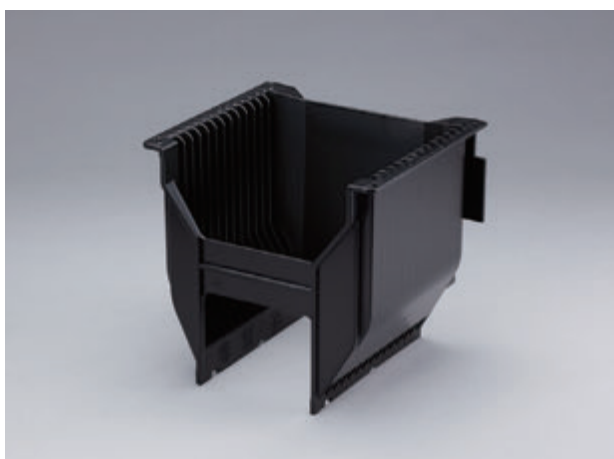
CR200F-09-01C-B3NT

Capacity	26
Dimension	235mm × 210mm × 219mm
D <sub>1</sub> dimension	25.4mm
Pocket pitch	6.35mm
Pocket flat	2.0mm



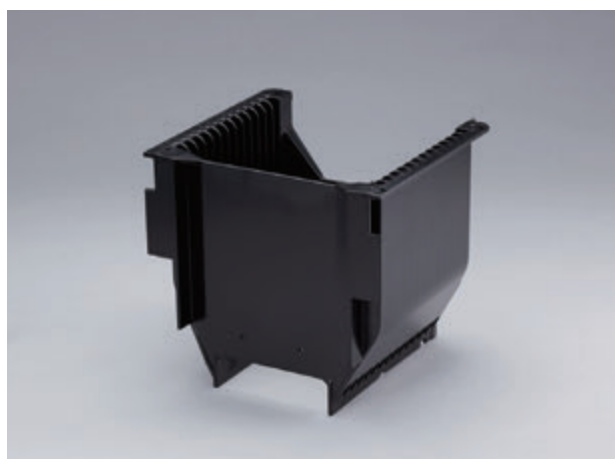
- H-shaped end for equipment interface.
- Solid end wall.
- Wash slots in sidewalls.
- Excellent heat resistance and rigidity. Ideal for use in high temperature applications such as wafer baking, diffusion and CVD.
- Enhanced stability for horizontal wafer handling.

## CR200F-10-02-B3 Bishop-3 (conductive high performance resin)



CR200F-10-02-B3

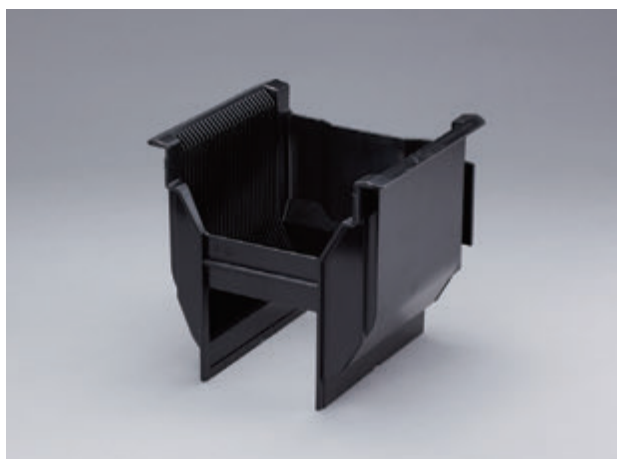
Capacity	13
Dimension	235mm × 210mm × 219mm
D <sub>1</sub> dimension	28.58mm
Pocket pitch	12.7mm
Pocket flat	8.75mm
Compatible box	BX200-01 • BX200-02 • BX200DS • BX200-12-C007



- H-shaped end for equipment interface.
- Wash slots in the bottom of sidewalls.
- Excellent heat resistance and rigidity. Ideal for use in high temperature applications such as wafer baking, diffusion and CVD.
- Sustains permanent antistatic effect. Metal-free conductive material eliminates contamination to wafer.
- Enhanced stability for horizontal wafer handling.



## CR200A-09-01W-PKCF PEEK+CF (conductive high performance resin)



CR200A-09-01W-PKCF

Capacity	25(+1)
Dimension	235mm × 209mm × 219mm
D <sub>1</sub> dimension	25.89mm
Pocket pitch	6.35mm
Pocket flat	3.0mm



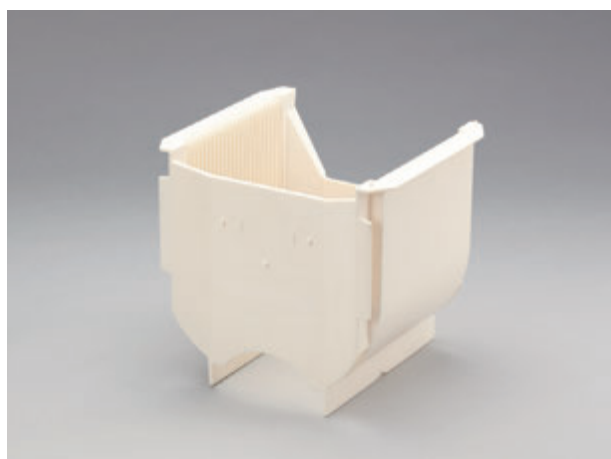
- H-shaped end for equipment interface.
- Solid end wall.
- Wash slots in the bottom of sidewalls.
- Excellent heat resistance and rigidity. Ideal for use in high temperature applications such as wafer baking, diffusion and CVD.
- Additional pocket with pocket flat of 2.17mm.

## CR200G-03SF-2BW Stat Free-1 (antistatic PBT alloy)



CR200G-03SF-2BW

Capacity	25
Dimension	234mm × 204mm × 220mm
D <sub>1</sub> dimension	25.4mm
Pocket pitch	6.35mm
Pocket flat	1.8mm
Compatible box	BX200-01 • BX200-02 • BX200DS • BX200-12-C007



- H-shaped end for equipment interface.
- Solid end wall.
- Wash slots in the bottom of sidewalls.
- Sustains almost permanent antistatic effect. Metal-free conductive material eliminates contamination to wafer.
- Enhanced stability for horizontal wafer handling.

## CR200G-03SF-H Stat Free-1 (antistatic PBT alloy)



CR200G-03SF-H

Capacity	25
Dimension	234mm × 204mm × 220mm
D <sub>1</sub> dimension	25.4mm
Pocket pitch	6.35mm
Pocket flat	1.8mm
Compatible box	BX200-01 • BX200-02 • BX200DS • BX200-12-C007



- H-shaped end for equipment interface.
- E-shaped handle on end wall.
- Wash slots in sidewalls.
- Sustain almost permanent antistatic effect.  
Metal-free conductive material eliminates contamination to wafer.
- Enhanced stability for horizontal wafer handling.

## CR200F-03SF-W Stat Free-1 (antistatic PBT alloy)



CR200F-03SF-W

Capacity	25
Dimension	235mm × 202mm × 219mm
D <sub>1</sub> dimension	25.4mm
Pocket pitch	6.35mm
Pocket flat	1.8mm
Compatible box	BX200-02 • BX200-12-C007



- H-shaped end for equipment interface.
- Solid end wall.
- Wash slots in the bottom of sidewalls.
- Sustains almost permanent antistatic effect.  
Metal-free conductive material eliminates contamination to wafer.
- Enhanced stability for horizontal wafer handling.

## CR200G-03SF-8H Stat Free-1 (antistatic PBT alloy)



CR200G-03SF-8H

Capacity	25
Dimension	234mm × 204mm × 220mm
D <sub>1</sub> dimension	25.4mm
Pocket pitch	6.35mm
Pocket flat	1.8mm
Compatible box	BX200-01 • BX200-02 • BX200DS • BX200-12-C007



- H-shaped end for equipment interface.
- E-shaped handle on end wall.
- Wash slots in the bottom of sidewalls.
- Sustains almost permanent antistatic effect.  
Metal-free conductive material eliminates contamination to wafer.
- Enhanced stability for horizontal wafer handling.

## CR200G-03SF-4HI Stat Free-1 (antistatic PBT alloy)



CR200G-03SF-4HI

Capacity	25
Dimension	234mm × 204mm × 220mm
D <sub>1</sub> dimension	25.4mm
Pocket pitch	6.35mm
Pocket flat	1.8mm
Compatible box	BX200-01 • BX200-02 • BX200DS • BX200-12-C007



- H-shaped end for equipment interface.
- E-shaped handle on end wall.
- Wash slots in sidewalls.
- Sustains almost permanent antistatic effect.  
Metal-free conductive material eliminates contamination to wafer.
- Enhanced stability for horizontal wafer handling.

## CR200G-05SF-CW Stat Free-1 (antistatic PBT alloy)



CR200G-05SF-CW

Capacity	25
Dimension	234mm × 203mm × 218mm
D <sub>1</sub> dimension	25.4mm
Pocket pitch	6.35mm
Pocket flat	1.8mm
Compatible box	BX200-01 • BX200-02 • BX200DS • BX200-12-C007 • BX200H



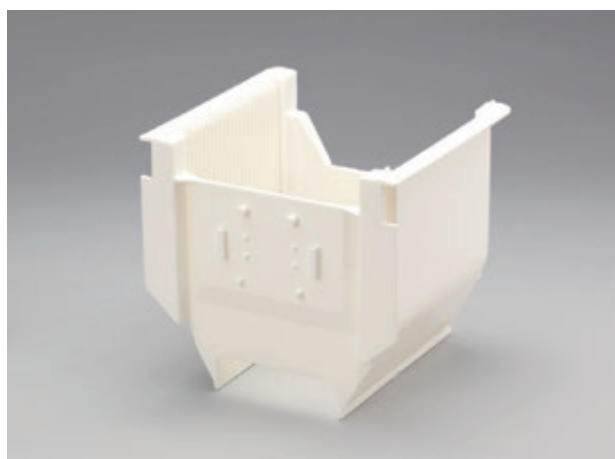
- H-shaped end for equipment interface.
- Card holder on solid end wall.
- Wash slots in the bottom of sidewalls.
- Sustains almost permanent antistatic effect.  
Metal-free conductive material eliminates contamination to wafer.
- Enhanced stability for horizontal wafer handling.

## CR200F-05CW-SF Stat Free-1 (antistatic PBT alloy)



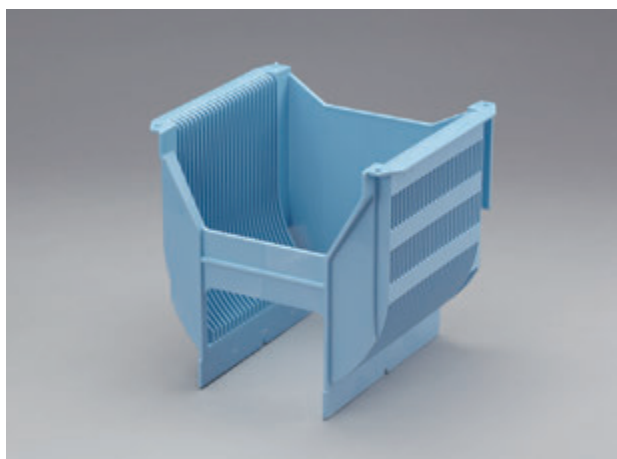
CR200F-05CW-SF

Capacity	26
Dimension	235mm × 209mm × 218mm
D <sub>1</sub> dimension	25.4mm
Pocket pitch	6.35mm
Pocket flat	1.8mm
Compatible box	BX200-01 • BX200-02 • BX200DS • BX200-12-C007



- H-shaped end for equipment interface.
- Card holder on solid end wall.
- Wash slots in the bottom of sidewalls.
- Sustains almost permanent antistatic effect.  
Metal-free conductive material eliminates contamination to wafer.
- Enhanced stability for horizontal wafer handling.

## CR200G-07-01H-SF Stat Free-1 (antistatic PBT alloy)



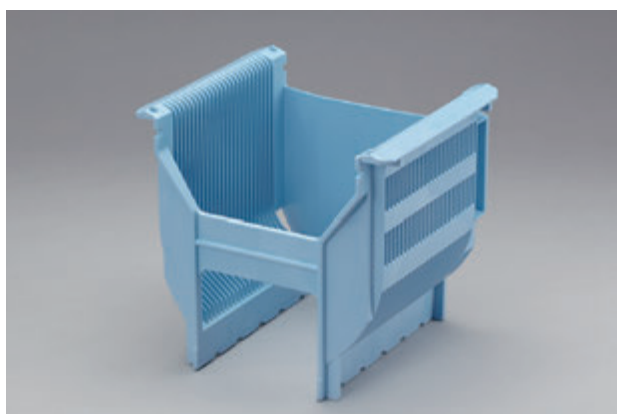
CR200G-07-01H-SF (Non-standard color example)

Capacity	25
Dimension	233mm × 221mm × 219mm
D <sub>1</sub> dimension	24.55mm
Pocket pitch	6.35mm
Pocket flat	1.8mm



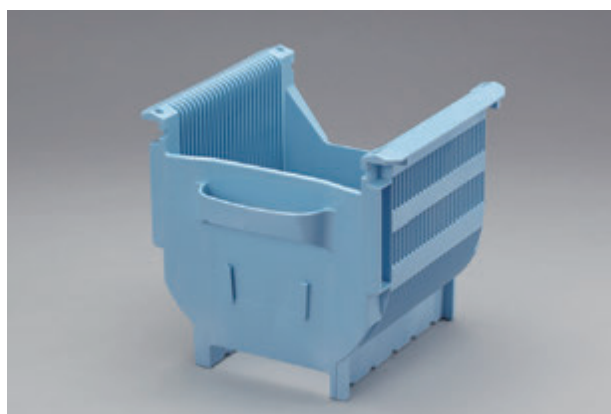
- H-shaped end for equipment interface.
- E-shaped handle on end wall.
- Wash slots in sidewalls.
- Sustains almost permanent antistatic effect.  
Metal-free conductive material eliminates contamination to wafer.
- Enhanced stability for horizontal wafer handling.

## CR200A-03SF-BH Stat Free-1 (antistatic PBT alloy)



CR200A-03SF-BH (Non-standard color example)

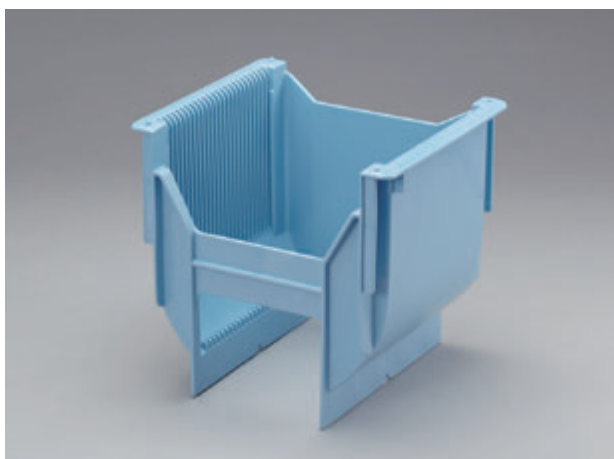
Capacity	25
Dimension	240mm × 203mm × 219mm
D <sub>1</sub> dimension	25.4mm
Pocket pitch	6.35mm
Pocket flat	1.65mm
Compatible box	BX200-01 • BX200-02 • BX200DS • BX200-12-C007 • BX200H
Compatible card	BX200N2



- H-shaped end for equipment interface.
- [-shaped handle and card holder on end wall.
- Card holder holds BX200N2 card for box (P118).
- Wash slots in sidewalls.
- Sustains almost permanent antistatic effect.  
Metal-free conductive material eliminates contamination to wafer.
- Enhanced stability for horizontal wafer handling.

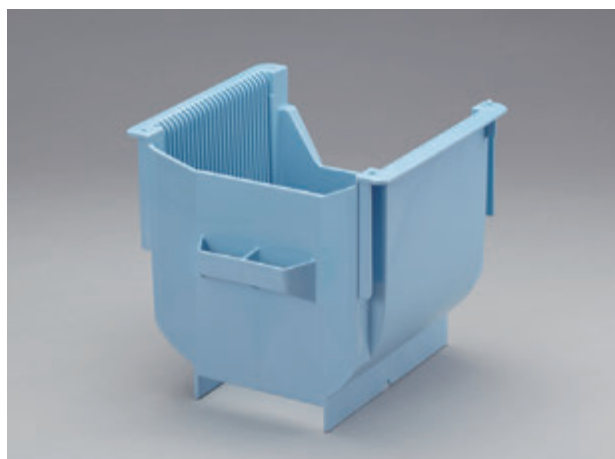


## CR200A-05-HW-SF Stat Free-1 (antistatic PBT alloy)



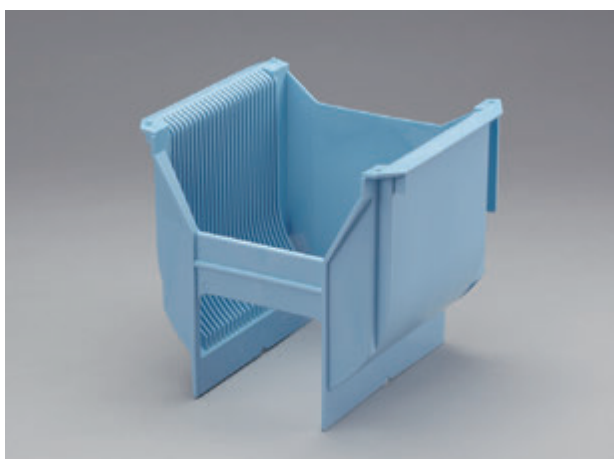
CR200A-05-HW-SF (Non-standard color example)

Capacity	25
Dimension	233mm × 202mm × 219mm
D <sub>1</sub> dimension	25.4mm
Pocket pitch	6.35mm
Pocket flat	1.82mm
Compatible box	BX200-01 • BX200-02 • BX200DS • BX200-12-C007 • BX200H



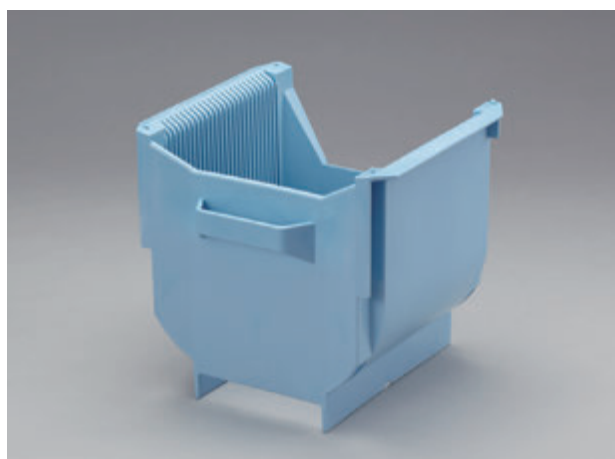
- H-shaped end for equipment interface.
- Solid end wall.
- E-shaped handle on end wall.
- No wash slot in sidewalls.
- Sustains almost permanent antistatic effect.  
Metal-free conductive material eliminates contamination to wafer.
- Enhanced stability for horizontal wafer handling.

## CR200A-07HW Stat Free-1 (antistatic PBT alloy)



CR200A-07HW(Non-standard color example)

Capacity	25
Dimension	234mm × 203mm × 219mm
D <sub>1</sub> dimension	25.4mm
Pocket pitch	6.35mm
Pocket flat	1.9mm
Compatible box	BX200-01 • BX200-02 • BX200DS • BX200-12-C007



- H-shaped end for equipment interface.
- E-shaped handle on end wall.
- No wash slot in sidewalls.
- Sustains almost permanent antistatic effect.  
Metal-free conductive material eliminates contamination to wafer.
- Enhanced stability for horizontal wafer handling.



## CR200-QN01 Stat Free-1 (antistatic PBT alloy)



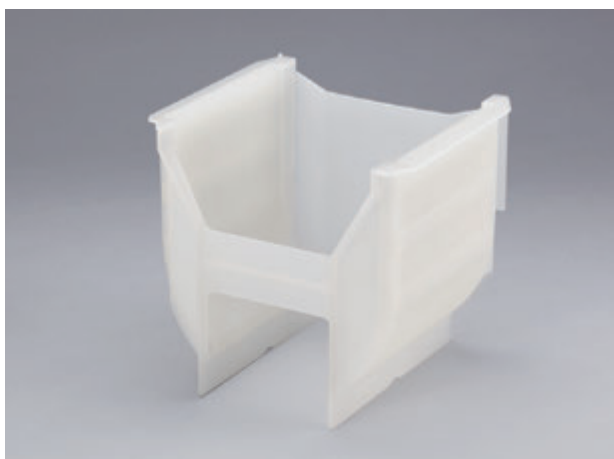
CR200-QN01

Capacity	26
Dimension	235mm × 210mm × 219mm
D <sub>1</sub> dimension	25.4mm
Pocket pitch	6.35mm
Pocket flat	1.8mm
Compatible box	BX200-01 • BX200-02 • BX200DS • BX200-12-C007



- H-shaped end for equipment interface.
- Card holder and robotic flange on solid end wall.
- Wash slots in the bottom of sidewalls.
- Sustains almost permanent antistatic effect.  
Metal-free conductive material eliminates contamination to wafer.
- Enhanced stability for horizontal wafer handling.

## CR200G-02PA antistatic Polypropylene



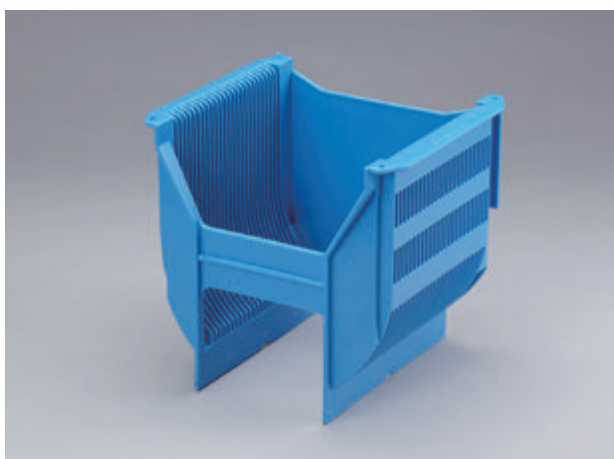
CR200G-02PA

Capacity	25
Dimension	234mm × 203mm × 219mm
D <sub>1</sub> dimension	25.4mm
Pocket pitch	6.35mm
Pocket flat	1.8mm
Compatible box	BX200-01 • BX200-02 • BX200DS • BX200-12-C007 • BX200H



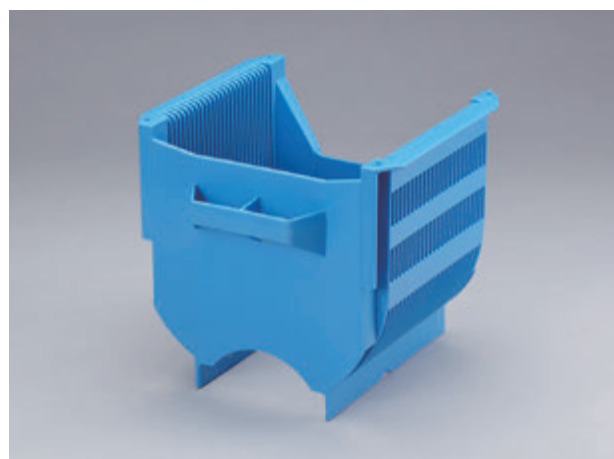
- H-shaped end for equipment interface.
- Solid end wall.
- Wash slots in sidewalls.
- Enhanced stability for horizontal wafer handling.

## CR200G-02PA-H antistatic Polypropylene



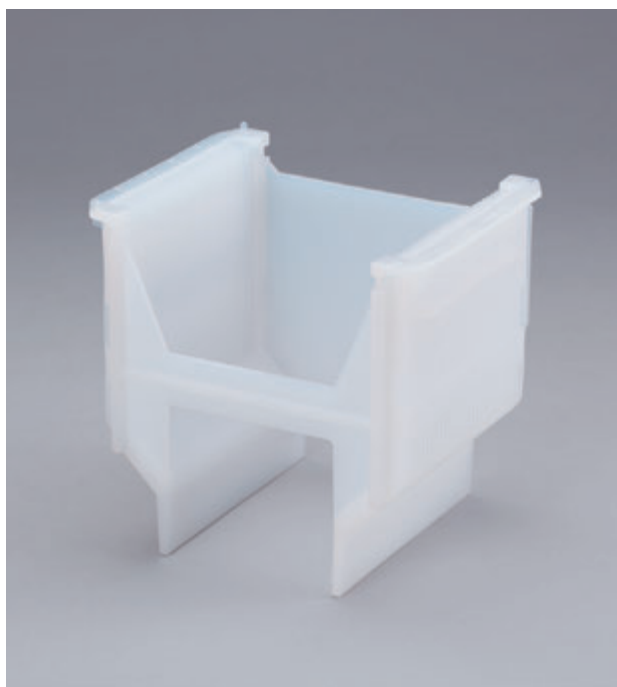
CR200G-02PA-H (Non-standard color example)

Capacity	25
Dimension	234mm × 203mm × 219mm
D <sub>1</sub> dimension	25.4mm
Pocket pitch	6.35mm
Pocket flat	1.8mm
Compatible box	BX200-01 • BX200-02 • BX200DS • BX200-12-C007



- H-shaped end for equipment interface.
- E-shaped handle on end wall.
- Wash slots in sidewalls.
- Enhanced stability for horizontal wafer handling.

# CR150A-06LF-F PFA



CR150A-06LF-F



Capacity	25
Dimension	178mm × 143mm × 171mm
D <sub>1</sub> dimension	14.54mm
Pocket pitch	4.76mm
Pocket flat	1.52mm
Compatible box	BX150 • BX150W-01 • BX150W-02
Compatible handle	CH6-3 • CH6-3L

- H-shaped end for equipment interface.
- Solid end wall.
- Wash slots in sidewalls to improve cleaning, draining and drying effect.

# CR150A-CLF PFA

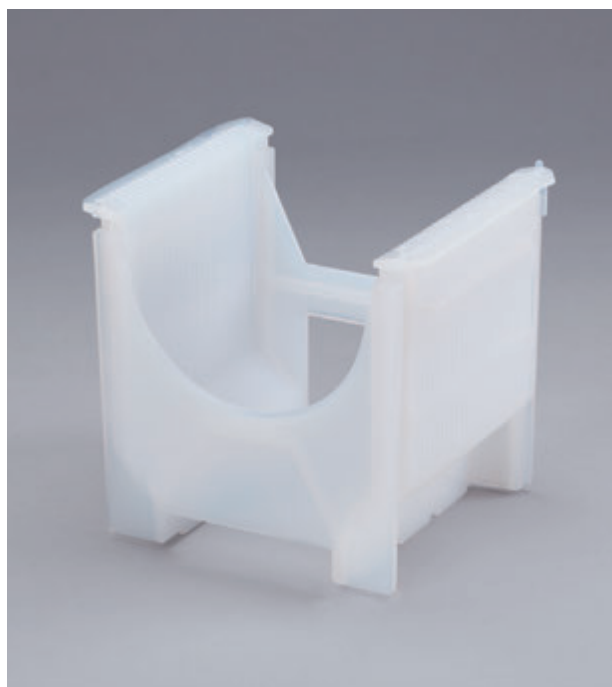


CR150A-CLF

Capacity	25
Dimension	178mm × 143mm × 164mm
D <sub>1</sub> dimension	14.54mm
Pocket pitch	4.76mm
Pocket flat	1.52mm
Compatible box	BX150 • BX150W-01 • BX150W-02
Compatible handle	CH6-3 • CH6-3L

- H-shaped end for equipment interface.
- U-shaped end wall.
- Wash slots in sidewalls to improve cleaning, draining and drying effect.

# CR150A-RMF PFA

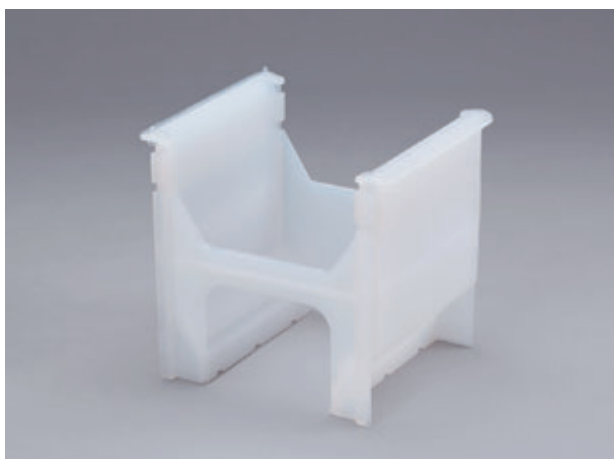


CR150A-RMF

Capacity	25
Dimension	178mm × 144mm × 165mm
D <sub>1</sub> dimension	14.54mm
Pocket pitch	4.76mm
Pocket flat	1.52mm
Compatible box	BX150 • BX150W-01 • BX150W-02
Compatible handle	CH6-3 • CH6-3L

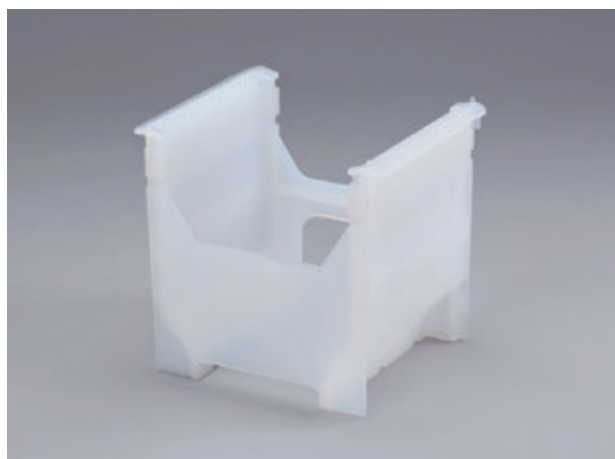
- H-shaped end for equipment interface.
- U-shaped end wall.
- Wash slots in sidewalls to improve cleaning, draining and drying effect.

## CR150A-03LF PFA、PFA-BC



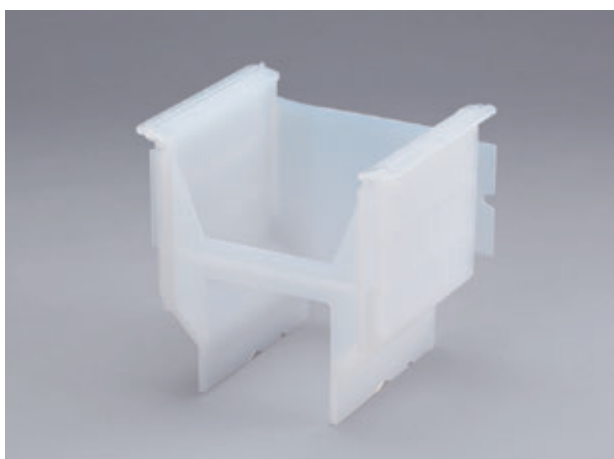
CR150A-03LF (PFA)

Capacity	26
Dimension	178mm × 143mm × 164mm
D <sub>1</sub> dimension	14.54mm
Pocket pitch	4.76mm
Pocket flat	1.52mm
Compatible box	BX150 • BX150W-01 • BX150W-02
Compatible handle	CH6-3 • CH6-3L



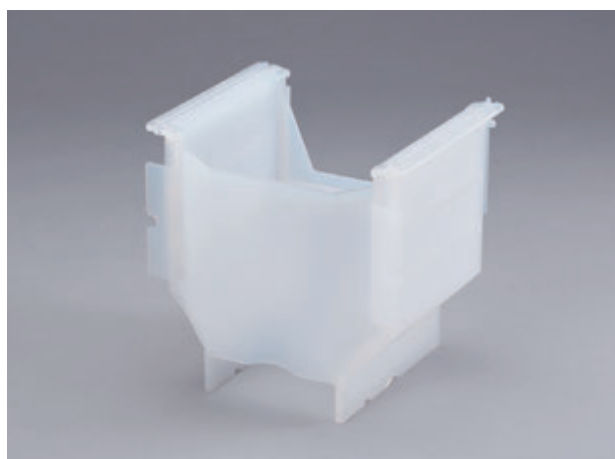
- H-shaped end for equipment interface.
- U-shaped end wall.
- Wash slots in sidewalls to improve cleaning, draining and drying effect.

## CR150A-04LF PFA



CR150A-04LF

Capacity	25
Dimension	178mm × 143mm × 171mm
D <sub>1</sub> dimension	14.54mm
Pocket pitch	4.76mm
Pocket flat	1.52mm
Compatible box	BX150 • BX150W-01 • BX150W-02
Compatible handle	CH6-3 • CH6-3L



- H-shaped end for equipment interface.
- Robotic flange on solid end wall.
- Wash slots in sidewalls to improve cleaning, draining and drying effect.

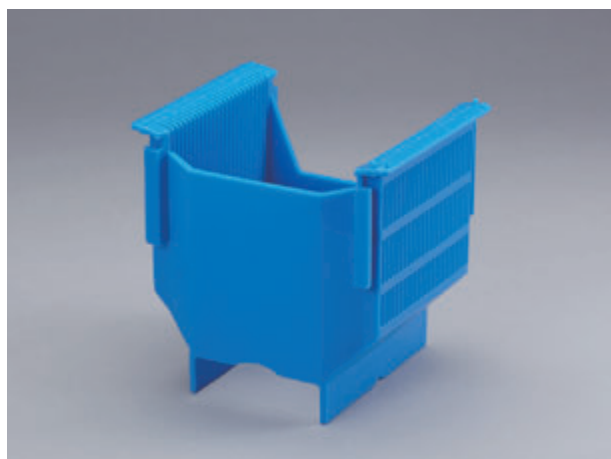


## CR150A-04LF-1 PFA



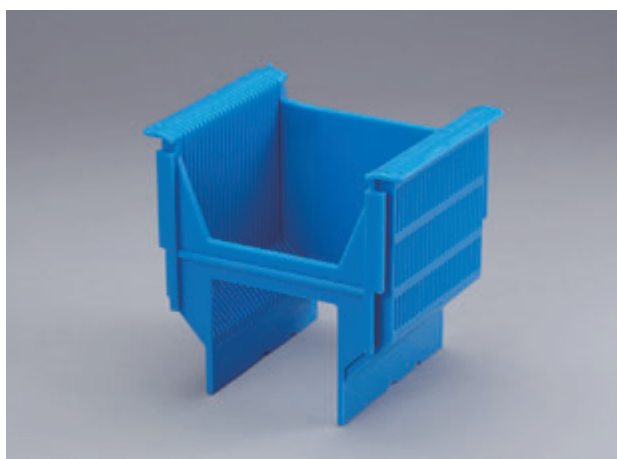
CR150A-04LF-1 (Non-standard color example)

Capacity	25
Dimension	178mm × 143mm × 171mm
D <sub>1</sub> dimension	14.54mm
Pocket pitch	4.76mm
Pocket flat	1.52mm
Compatible box	BX150 • BX150W-01 • BX150W-02
Compatible handle	CH6-3 • CH6-3L



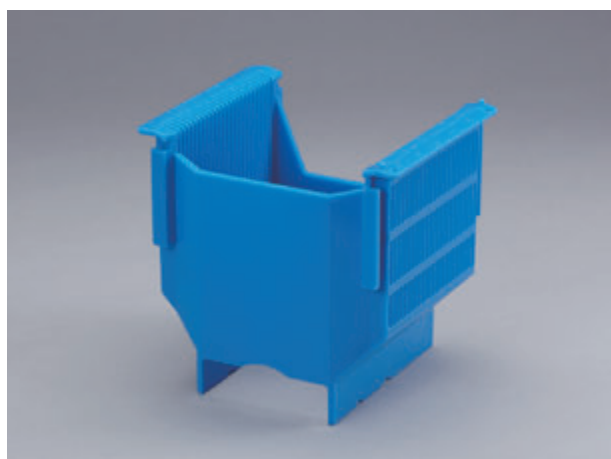
- H-shaped end for equipment interface.
- Solid end wall.
- Wash slots in sidewalls to improve cleaning, draining and drying effect.

## CR150A-04LF-1F PFA



CR150A-04LF-1F (Non-standard color example)

Capacity	25
Dimension	178mm × 143mm × 171mm
D <sub>1</sub> dimension	14.54mm
Pocket pitch	4.76mm
Pocket flat	1.52mm
Compatible box	BX150 • BX150W-01 • BX150W-02
Compatible handle	CH6-3 • CH6-3L



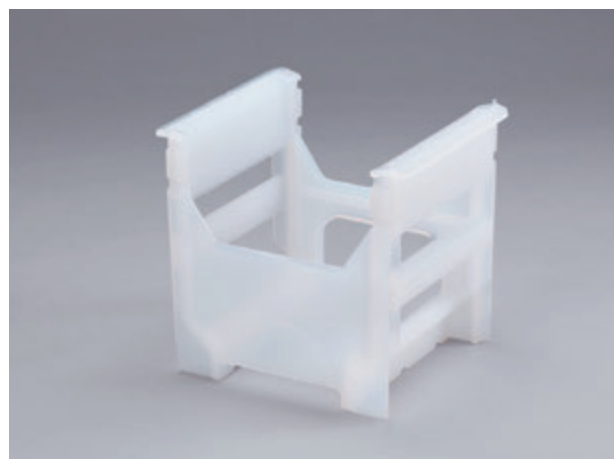
- H-shaped end for equipment interface.
- Solid end wall.
- Wash slots in sidewalls to improve cleaning, draining and drying effect.

## CR150A-05LF PFA



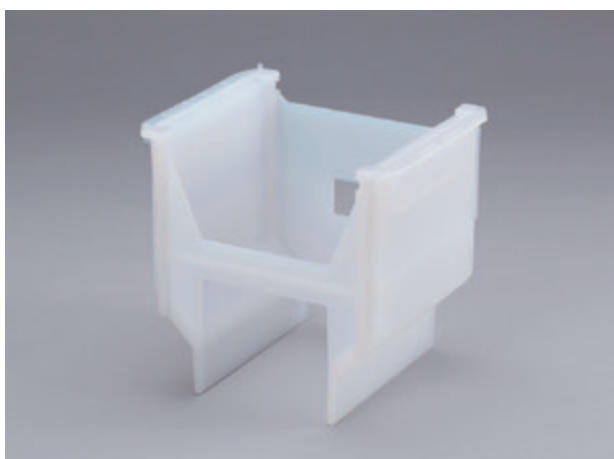
CR150A-05LF

Capacity	26
Dimension	178mm × 143mm × 164mm
D <sub>1</sub> dimension	14.54mm
Pocket pitch	4.76mm
Pocket flat	1.52mm
Compatible box	BX150 • BX150W-01 • BX150W-02
Compatible handle	CH6-3 • CH6-3L



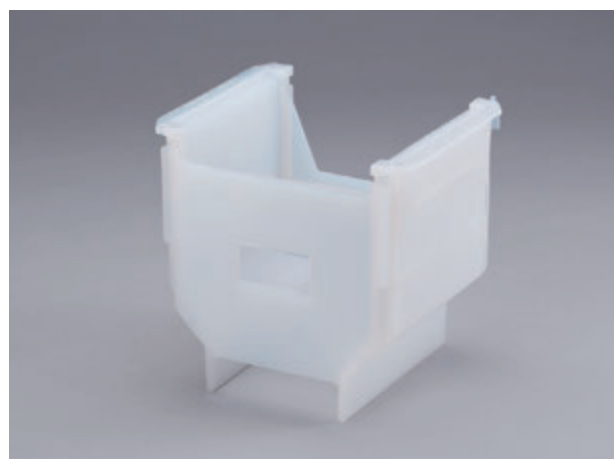
- H-shaped end for equipment interface.
- U-shaped end wall.
- Wash slots in sidewalls to improve cleaning, draining and drying effect.

## CR150A-06LF-FV PFA



CR150A-06LF-FV

Capacity	25
Dimension	178mm × 143mm × 171mm
D <sub>1</sub> dimension	14.54mm
Pocket pitch	4.76mm
Pocket flat	1.52mm
Compatible box	BX150 • BX150W-01 • BX150W-02
Compatible handle	CH6-3 • CH6-3L



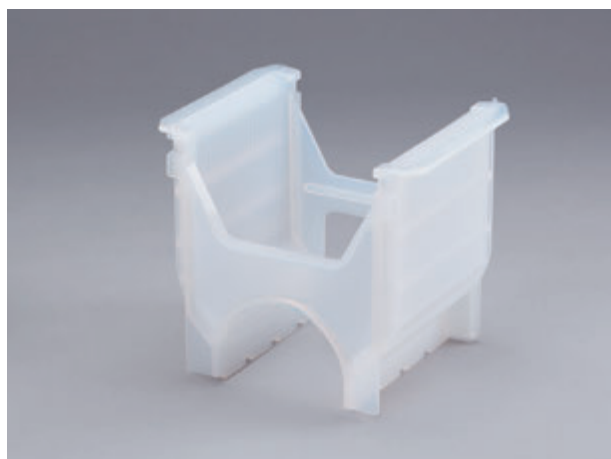
- H-shaped end for equipment interface.
- Square inspection window on end wall.
- Wash slots in sidewalls to improve cleaning, draining and drying effect.

## CR150A-08LF PFA



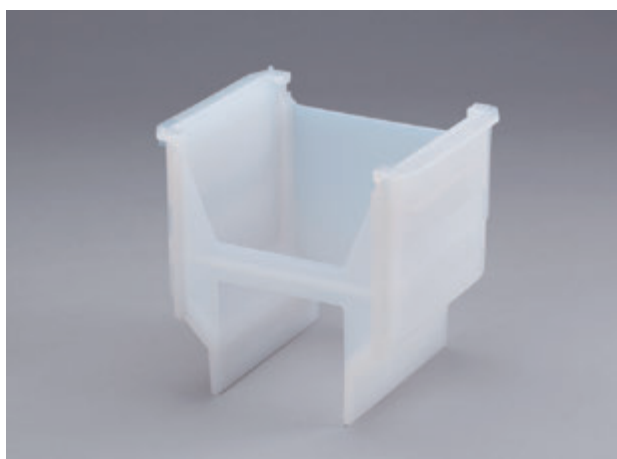
CR150A-08LF

Capacity	25
Dimension	187mm × 143mm × 165mm
D <sub>1</sub> dimension	14.54mm
Pocket pitch	4.76mm
Pocket flat	1.52mm
Compatible box	BX150W-01 • BX150W-02
Compatible handle	CH6-3 • CH6-3L



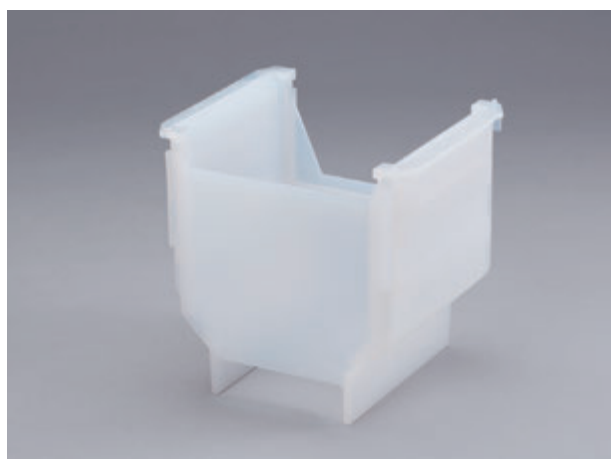
- H-shaped end for equipment interface.
- U-shaped end wall.
- Wash slots in sidewalls to improve cleaning, draining and drying effect.

## CR150A-30-01HS-MF PFA, PFA-BC



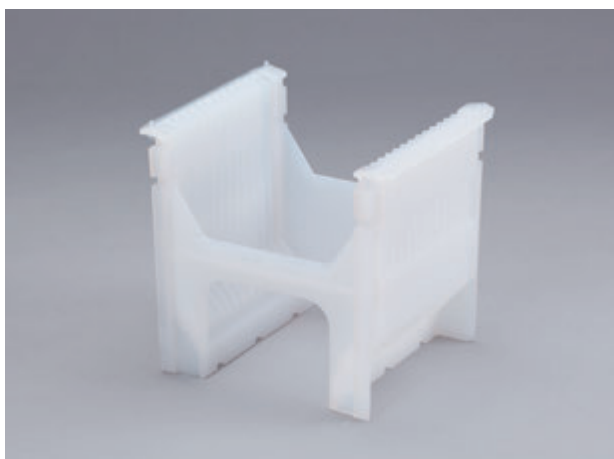
CR150A-30-01HS-MF (PFA)

Capacity	25
Dimension	178mm × 143mm × 171mm
D <sub>1</sub> dimension	14.2mm
Pocket pitch	4.76mm
Pocket flat	1.52mm
Compatible box	BX150 • BX150W-01 • BX150W-02
Compatible handle	CH6-3 • CH6-3L



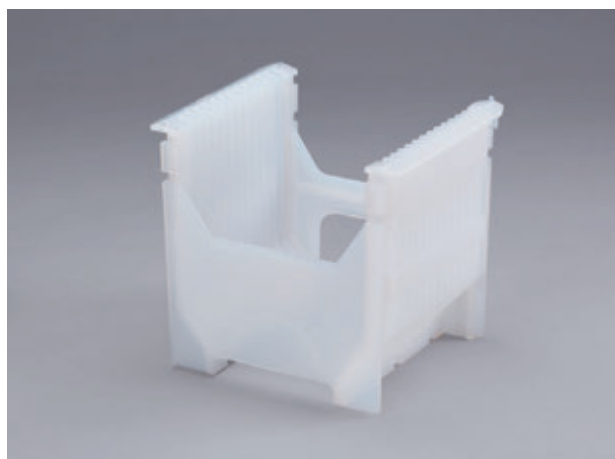
- H-shaped end for equipment interface.
- Solid end wall.
- Wash slots in sidewalls to improve cleaning, draining and drying effect.

## CR150A-DMF PFA



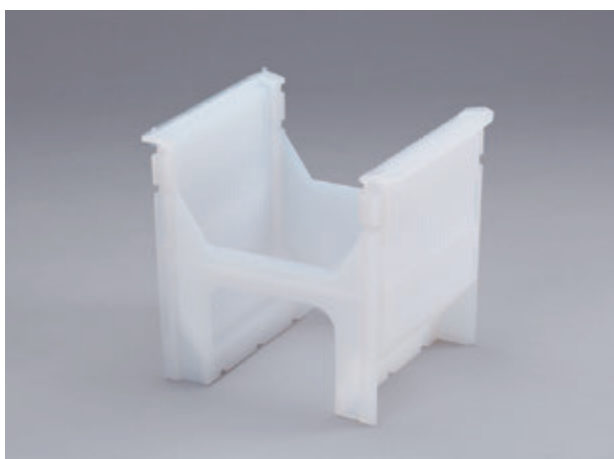
CR150A-DMF

Capacity	12
Dimension	178mm × 143mm × 164mm
D <sub>1</sub> dimension	25.1mm
Pocket pitch	9.19mm
Pocket flat	3.4mm
Compatible box	BX150 • BX150W-01 • BX150W-02
Compatible handle	CH6-3 • CH6-3L



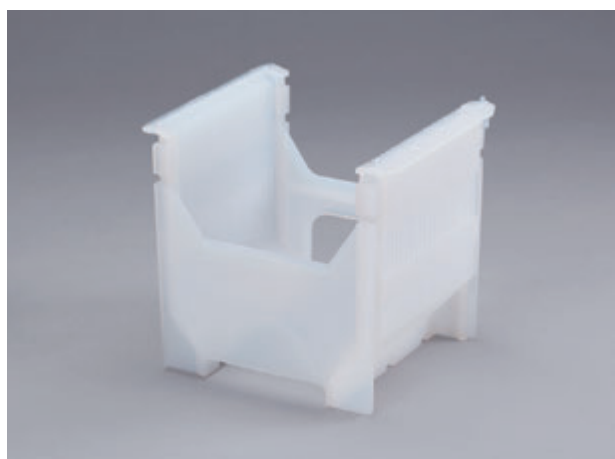
- H-shaped end for equipment interface.
- U-shaped end wall.
- Wash slots in sidewalls to improve cleaning, draining and drying effect.
- Accommodates thick wafer and round substrate.

## CR150A-EMF PFA



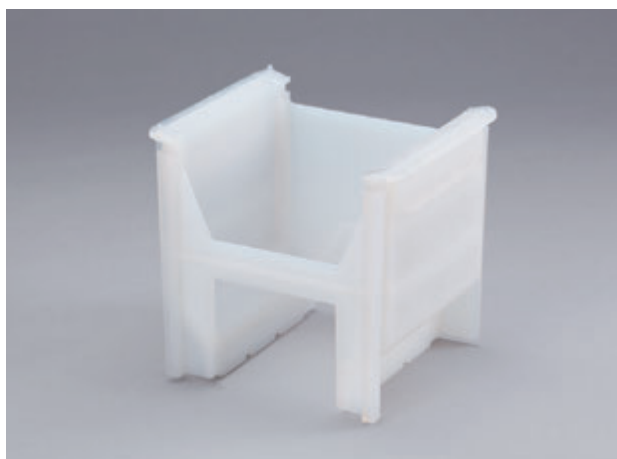
CR150A-EMF

Capacity	20
Dimension	178mm × 143mm × 164mm
D <sub>1</sub> dimension	14.54mm
Pocket pitch	6.00mm
Pocket flat	2.5mm
Compatible box	BX150 • BX150W-01 • BX150W-02
Compatible handle	CH6-3 • CH6-3L



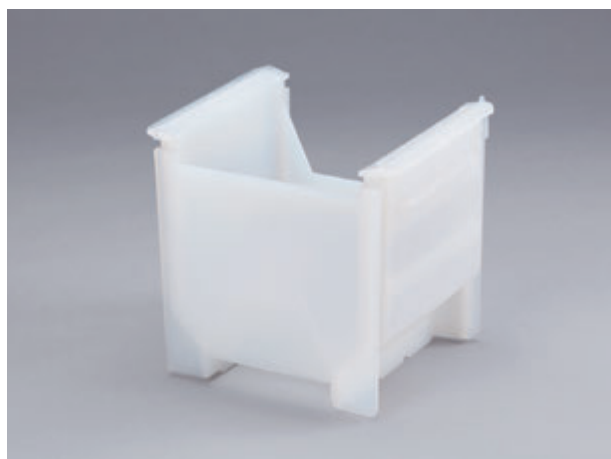
- H-shaped end for equipment interface.
- U-shaped end wall.
- Wash slots in sidewalls to improve cleaning, draining and drying effect.
- Accommodates thick wafer and round substrate.

## CR150A-HMF PFA



CR150A-HMF

Capacity	25
Dimension	178mm × 144mm × 165mm
D <sub>1</sub> dimension	14.54mm
Pocket pitch	4.76mm
Pocket flat	1.52mm
Compatible box	BX150 • BX150W-01 • BX150W-02



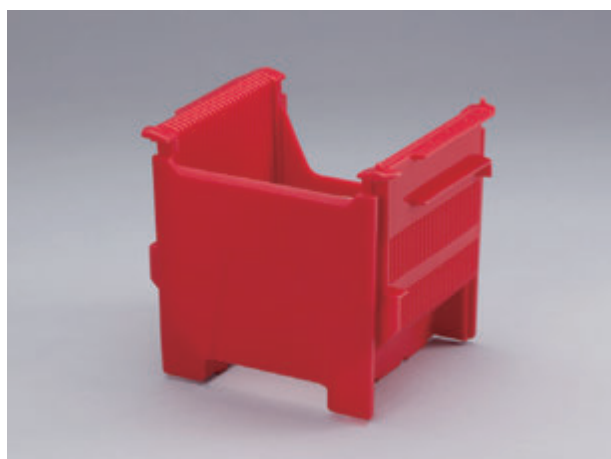
- H-shaped end for equipment interface.
- Solid end wall.
- Wash slots in sidewalls to improve cleaning, draining and drying effect.

## CR150A-OMF PFA



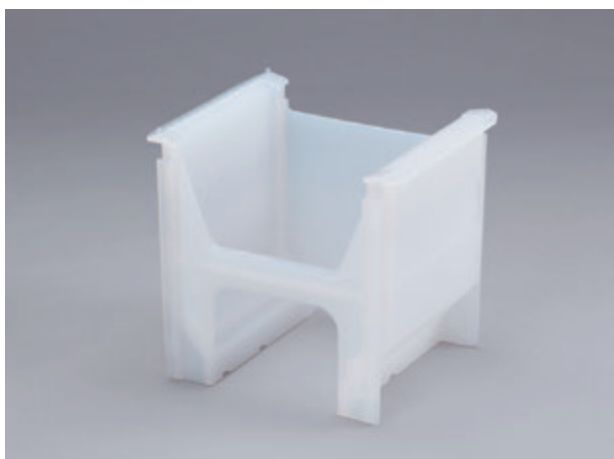
CR150A-OMF (Non-standard color example)

Capacity	25
Dimension	178mm × 144mm × 165mm
D <sub>1</sub> dimension	14.54mm
Pocket pitch	4.76mm
Pocket flat	1.52mm
Compatible box	BX150 • BX150W-01 • BX150W-02
Compatible handle	CH6-3 • CH6-3L



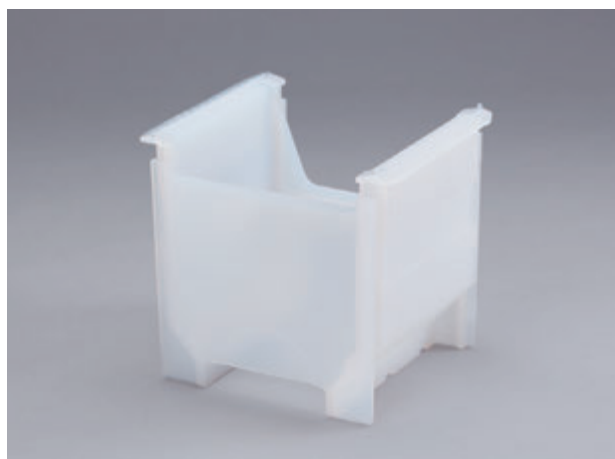
- H-shaped end for equipment interface.
- Solid end wall.
- Wash slots in sidewalls to improve cleaning, draining and drying effect.

## CR150A-PMF PFA



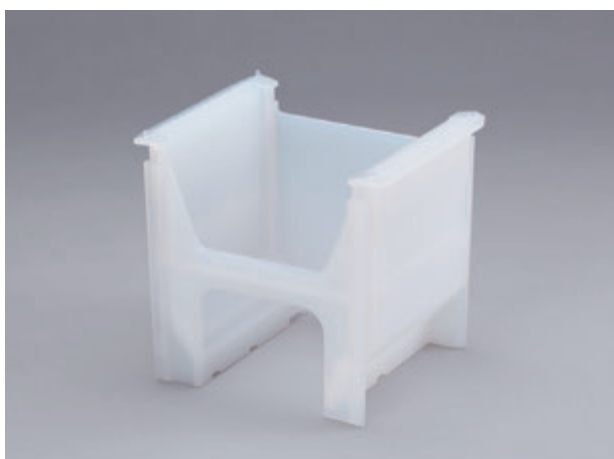
CR150A-PMF

Capacity	25
Dimension	178mm × 144mm × 164mm
D <sub>1</sub> dimension	14.54mm
Pocket pitch	4.76mm
Pocket flat	1.52mm
Compatible box	BX150 • BX150W-01 • BX150W-02
Compatible handle	CH6-3 • CH6-3L



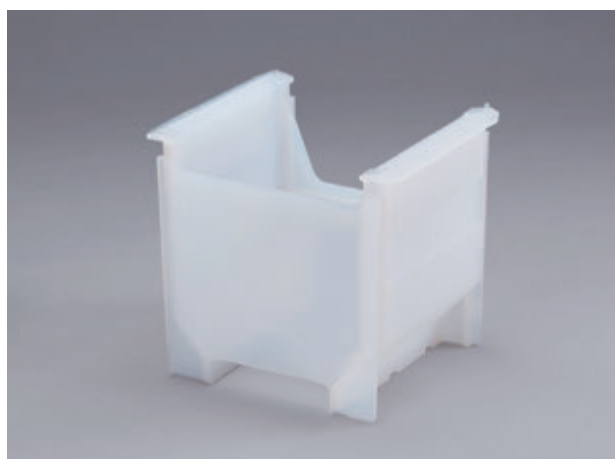
- H-shaped end for equipment interface.
- Solid end wall.
- Wash slots in sidewalls to improve cleaning, draining and drying effect.

## CR150A-QMF PFA



CR150A-QMF

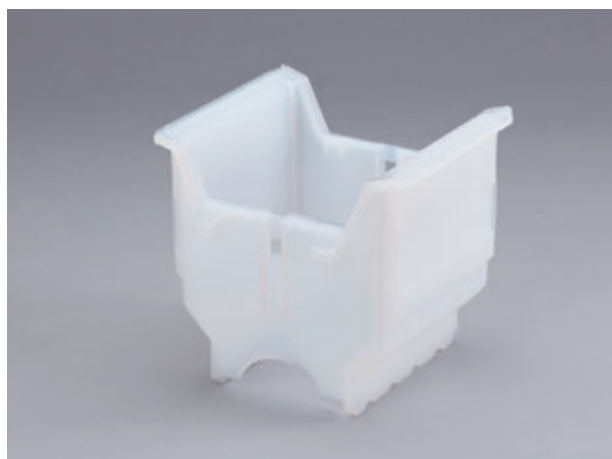
Capacity	25
Dimension	178mm × 144mm × 164mm
D <sub>1</sub> dimension	14.54mm
Pocket pitch	4.76mm
Pocket flat	1.52mm
Compatible box	BX150 • BX150W-01 • BX150W-02
Compatible handle	CH6-3 • CH6-3L



- H-shaped end for equipment interface.
- Solid end wall.
- Wash slots in sidewalls to improve cleaning, draining and drying effect.



# CR150N-MF PFA



CR150N-MF

Capacity	25
Dimension	180mm × 152mm × 165mm
D <sub>1</sub> dimension	18.9mm
Pocket pitch	4.76mm
Pocket flat	1.52mm

- Solid end wall.
- Wash slots in sidewalls.
- Lugs on both end walls for ultrasonic cleaning.

## CR150L-ALF PFA



CR150L-ALF

Capacity	25
Dimension	178mm × 147mm × 106mm
D <sub>1</sub> dimension	14.54mm
Pocket pitch	4.76mm
Pocket flat	1.00mm
Compatible box	BX150H • BX150W-01 • BX150W-02
Compatible handle	CH6-3 • CH6-3L



- H-shaped end for equipment interface.
- Wide openings on sidewalls to improve cleaning, draining and drying effect.
- Light weight for easy handling.

## CR150L-01LF PFA



CR150L-01LF

Capacity	26
Dimension	178mm × 147mm × 106mm
D <sub>1</sub> dimension	14.54mm
Pocket pitch	4.76mm
Pocket flat	1.00mm
Compatible box	BX150H • BX150W-01 • BX150W-02
Compatible handle	CH6-3 • CH6-3L



- H-shaped end for equipment interface.
- Wide openings on sidewalls to improve cleaning, draining and drying effect.
- Light weight for easy handling.

## CR150L-03LF-V PFA



CR150L-03LF-V

Capacity	50
Dimension	178mm × 143mm × 106mm
D <sub>1</sub> dimension	14.54mm
Pocket pitch	2.38mm
Pocket flat	0.80mm
Compatible box	BX150H • BX150W-01 • BX150W-02
Compatible handle	CH6-3 • CH6-3L



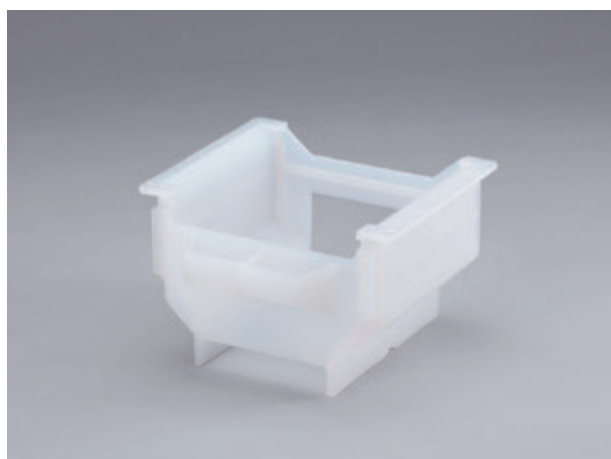
- H-shaped end for equipment interface.
- Wide openings on sidewalls to improve cleaning, draining and drying effect.
- Half pitch type accommodates 50 wafers.

## CR150L-06-H-LF PFA



CR150L-06-H-LF

Capacity	26
Dimension	178mm × 148mm × 114mm
D <sub>1</sub> dimension	14.54mm
Pocket pitch	4.76mm
Pocket flat	1.40mm
Compatible box	BX150W-01 • BX150W-02
Compatible handle	CH6-3 • CH6-3L



- H-shaped end for equipment interface.
- E-shaped handle on end wall.
- Wide openings on sidewalls to improve cleaning, draining and drying effect.

# CR150A-01B3-HW Bishop-3 (conductive high performance resin)



CR150A-01B3-HW

Capacity	25
Dimension	178mm × 143mm × 164mm
D <sub>1</sub> dimension	14.54mm
Pocket pitch	4.76mm
Pocket flat	1.54mm
Compatible box	BX150 • BX150W-01 • BX150W-02

- H-shaped end for equipment interface.
- E-shaped handle on end wall.
- No wash slot in sidewalls.
- Excellent heat resistance and rigidity. Ideal for use in high temperature applications such as wafer baking, diffusion and CVD.
- Enhanced stability for horizontal wafer handling.

# CR150A-10B3-CW Bishop-3 (conductive high performance resin)



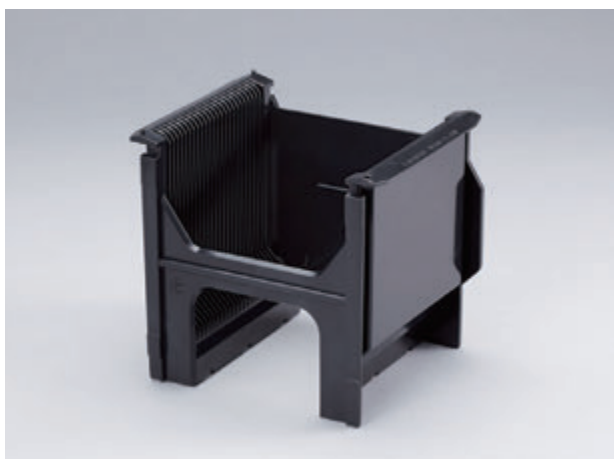
CR150A-10B3-CW



Capacity	12
Dimension	177mm × 144mm × 172mm
D <sub>1</sub> dimension	18.92mm
Pocket pitch	9.52mm
Pocket flat	3.81mm
Compatible box	BX150 • BX150W-01 • BX150W-02

- H-shaped end for equipment interface.
- Cardholder on solid end wall.
- Wash slots in the bottom of sidewalls.
- Accommodates thick wafer and round substrate.
- Excellent heat resistance and rigidity. Ideal for use in high temperature applications such as wafer baking, diffusion and CVD.
- Enhanced stability for horizontal wafer handling .

## CR150A-25-01W-SF Stat Free-1 (antistatic PBT alloy)



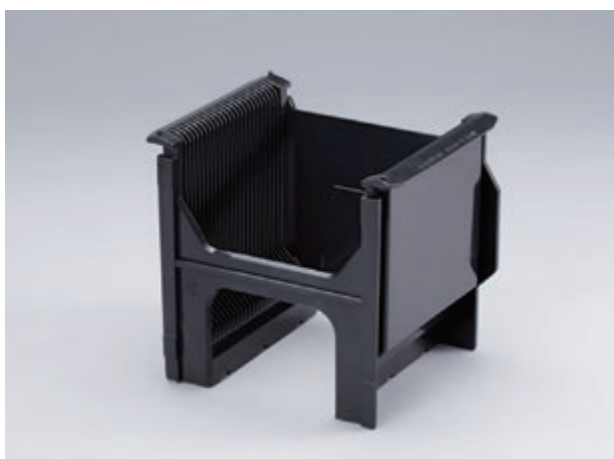
CR150A-25-01W-SF (Non-standard color example)

Capacity	25
Dimension	178mm × 143mm × 164mm
D <sub>1</sub> dimension	14.54mm
Pocket pitch	4.76mm
Pocket flat	1.52mm
Compatible box	BX150•BX150-09-C001•BX150W-01• BX150W-02•BX150-27-C001•BX150-04NV



- H-shaped end for equipment interface.
- Solid end wall.
- No wash slot in sidewalls.
- Sustains almost permanent antistatic effect.  
Metal-free conductive material eliminates contamination to wafer.
- Enhanced stability for horizontal wafer handling.

## CR150A-25-02HW-SF Stat Free-1 (antistatic PBT alloy)



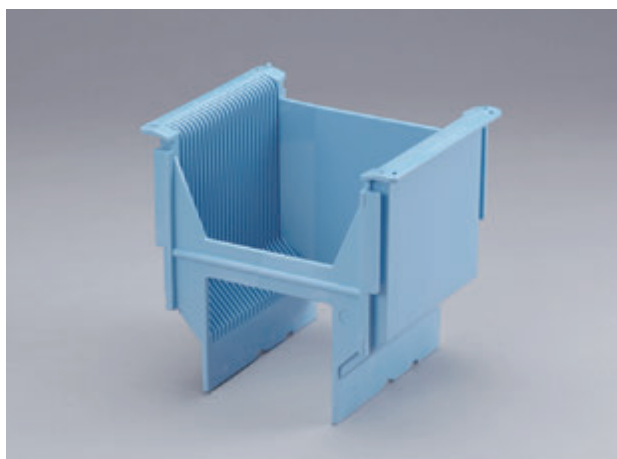
CR150A-25-02HW-SF (Non-standard color example)

Capacity	25
Dimension	178mm × 143mm × 164mm
D <sub>1</sub> dimension	14.54mm
Pocket pitch	4.76mm
Pocket flat	1.52mm
Compatible box	BX150•BX150-09-C001•BX150W-01• BX150W-02•BX150-27-C001•BX150-04NV



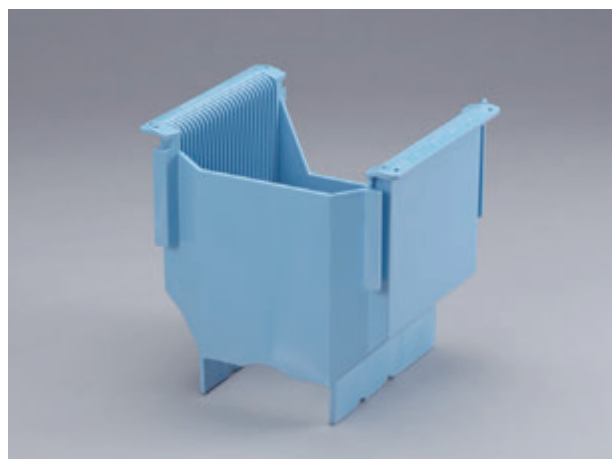
- H-shaped end for equipment interface.
- E-shaped handle on end wall.
- No wash slot in sidewalls.
- Sustains almost permanent antistatic effect.  
Metal-free conductive material eliminates contamination to wafer.
- Enhanced stability for horizontal wafer handling.

## CR150A-13W-SF Stat Free-1 (antistatic PBT alloy)



CR150A-13W-SF (Non-standard color example)

Capacity	25
Dimension	178mm × 144mm × 170mm
D <sub>1</sub> dimension	14.54mm
Pocket pitch	4.76mm
Pocket flat	1.52mm
Compatible box	BX150 • BX150W-01 • BX150W-02



- H-shaped end for equipment interface.
- Solid end wall.
- No wash slot in sidewalls.
- Sustains almost permanent antistatic effect.  
Metal-free conductive material eliminates contamination to wafer.
- Enhanced stability for horizontal wafer handling.

## CR150A-14W-SF Stat Free-1 (antistatic PBT alloy)



CR150A-14W-SF

Capacity	25
Dimension	177mm × 143mm × 171mm
D <sub>1</sub> dimension	14.54mm
Pocket pitch	4.76mm
Pocket flat	1.52mm
Compatible box	BX150 • BX150W-01 • BX150W-02



- H-shaped end for equipment interface.
- Solid end wall.
- No wash slot in sidewalls.
- Sustains almost permanent antistatic effect.  
Metal-free conductive material eliminates contamination to wafer.
- Enhanced stability for horizontal wafer handling.



## CR150A-26-01W-SF Stat Free-1 (antistatic PBT alloy)



CR150A-26-01W-SF

Capacity	25
Dimension	178mm × 143mm × 164mm
D <sub>1</sub> dimension	14.54mm
Pocket pitch	4.76mm
Pocket flat	1.52mm
Compatible box	BX150 • BX150-09-C001 • BX150W-01 • BX150W-02 • BX150W-PA-2F



- H-shaped end for equipment interface.
- Solid end wall.
- No wash slot in sidewalls.
- Sustains almost permanent antistatic effect.  
Metal-free conductive material eliminates contamination to wafer.
- Enhanced stability for horizontal wafer handling.

## CR150A-FPA antistatic Polypropylene, conductive Polypropylene



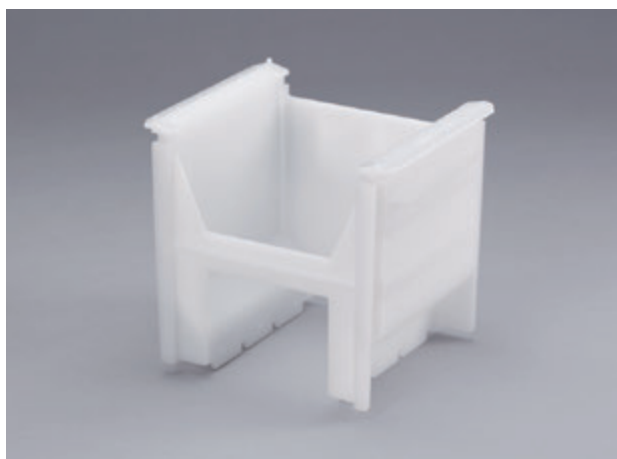
CR150A-FPA

Capacity	25
Dimension	178mm × 143mm × 165mm
D <sub>1</sub> dimension	14.54mm
Pocket pitch	4.76mm
Pocket flat	1.52mm
Compatible box	BX150 • BX150-09-C001 • BX150W-01 • BX150W-02



- H-shaped end for equipment interface.
- Solid end wall.
- Wash slots in sidewalls.
- Enhanced stability for horizontal wafer handling.

## CR150A-GPA antistatic Polypropylene



CR150A-GPA

Capacity	25
Dimension	178mm × 143mm × 165mm
D <sub>1</sub> dimension	14.54mm
Pocket pitch	4.76mm
Pocket flat	1.52mm
Compatible box	BX150•BX150-09-C001•BX150W-01•
	BX150W-02•BX150W-PA-2F•BX150-SF-UK



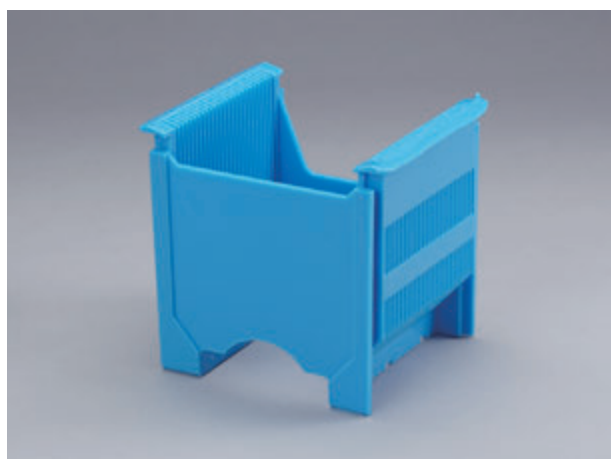
- H-shaped end for equipment interface.
- E-shaped handle on end wall.
- Wash slots in sidewalls.
- Enhanced stability for horizontal wafer handling.

## CR150A-MPA antistatic Polypropylene



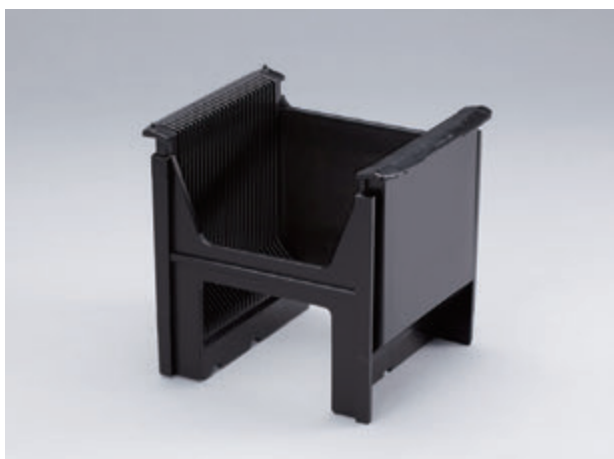
CR150A-MPA (Non-standard color example)

Capacity	25
Dimension	178mm × 143mm × 164mm
D <sub>1</sub> dimension	14.54mm
Pocket pitch	4.76mm
Pocket flat	1.52mm
Compatible box	BX150 • BX150H • BX150W-01 •
	BX150W-02



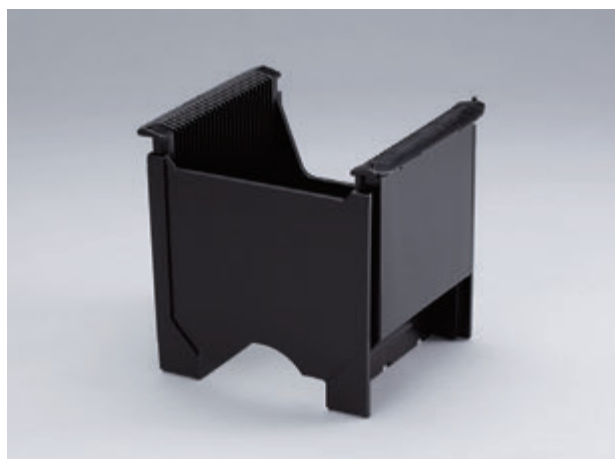
- H-shaped end for equipment interface.
- Solid end wall.
- Wash slots in sidewalls.
- Enhanced stability for horizontal wafer handling.

## CR150A-MPA-W antistatic Polypropylene



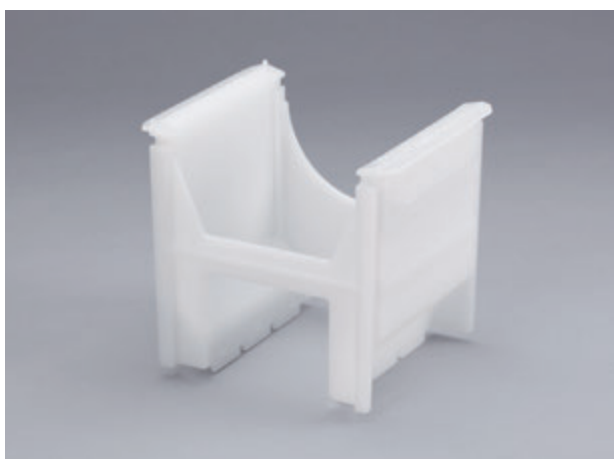
CR150A-MPA-W (Non-standard color example)

Capacity	25
Dimension	178mm × 143mm × 164mm
D <sub>1</sub> dimension	14.54mm
Pocket pitch	4.76mm
Pocket flat	1.52mm
Compatible box	BX150 • BX150H • BX150W-01 • BX150W-02



- H-shaped end for equipment interface.
- Solid end wall.
- No wash slot in sidewalls.
- Enhanced stability for horizontal wafer handling.

## CR150A-PPA antistatic Polypropylene



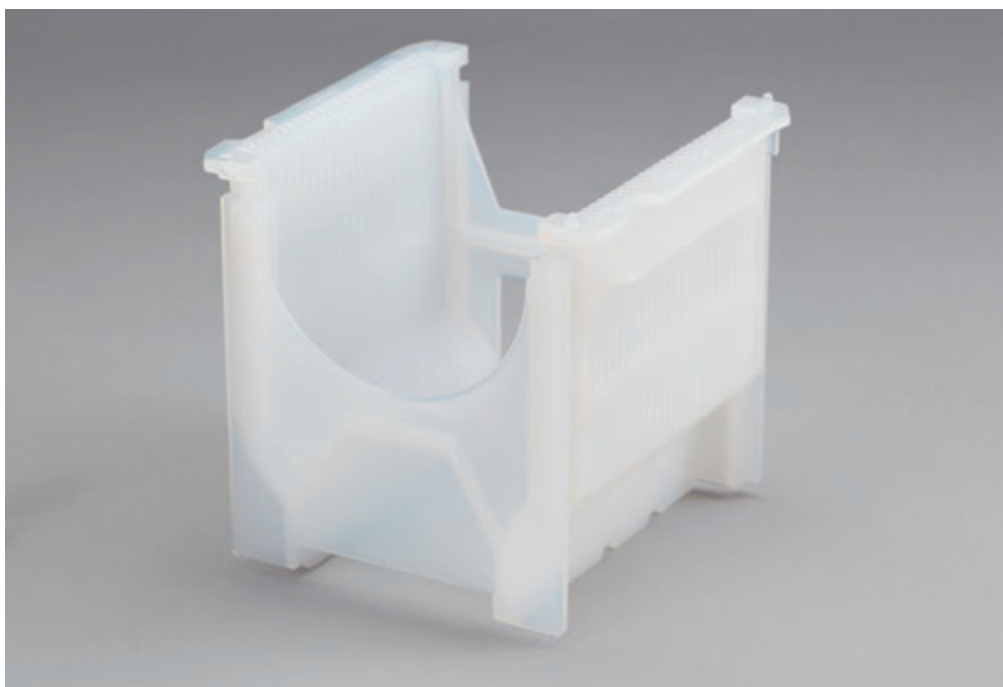
CR150A-PPA

Capacity	25
Dimension	178mm × 143mm × 165mm
D <sub>1</sub> dimension	14.54mm
Pocket pitch	4.76mm
Pocket flat	1.52mm
Compatible box	BX150 • BX150-09-C001 • BX150W-01 • BX150W-02



- H-shaped end for equipment interface.
- U-shaped end wall.
- Wash slots in sidewalls.
- Enhanced stability for horizontal wafer handling.

# CR125A-IMF PFA

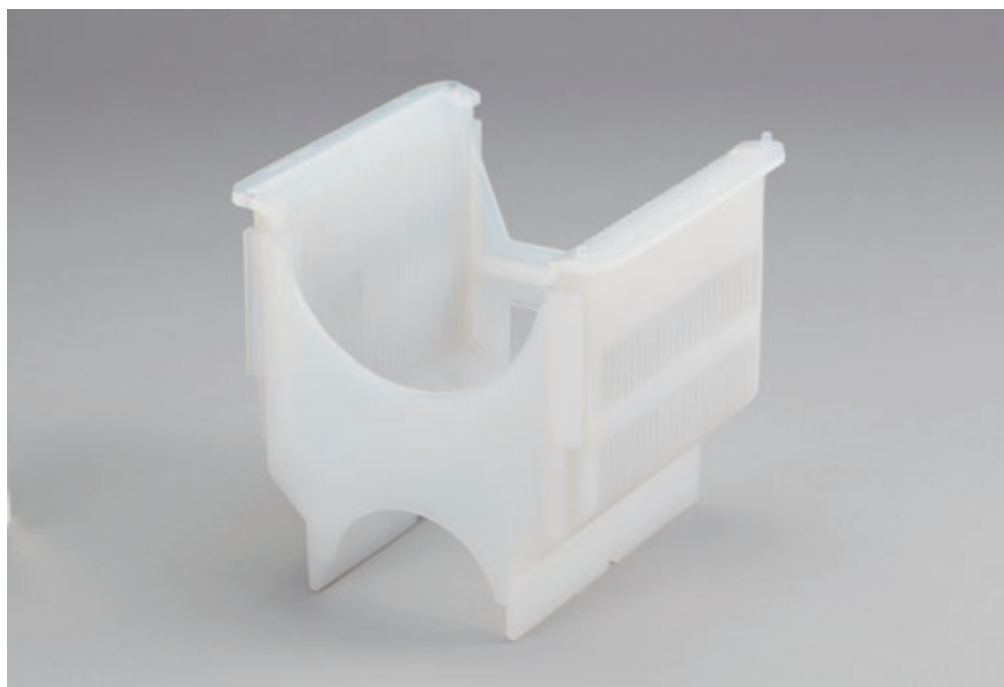


CR125A-IMF

Capacity	25
Dimension	152mm × 143mm × 146mm
D <sub>1</sub> dimension	14.54mm
Pocket pitch	4.76mm
Pocket flat	1.52mm
Compatible box	BX125 • BX125-03
Compatible handle	CH5-3 • CH5-3L

- H-shaped end for equipment interface.
- U-shaped end wall.
- Wash slots in sidewalls to improve cleaning, draining and drying effect.

# CR125A-JMF PFA



CR125A-JMF

Capacity	25
Dimension	154mm × 143mm × 146mm
D <sub>1</sub> dimension	14.54mm
Pocket pitch	4.76mm
Pocket flat	1.52mm
Compatible box	BX125 • BX125-03 • BX125DSW
Compatible handle	CH5-3 • CH5-3L

- H-shaped end for equipment interface.
- U-shaped end wall.
- Wash slots in sidewalls to improve cleaning, draining and drying effect.

Box

RSP

Mask  
CaseChip  
TrayOther  
ProductsTechnical  
Info

## CR125A-IMF-12H PFA, PFA-BC



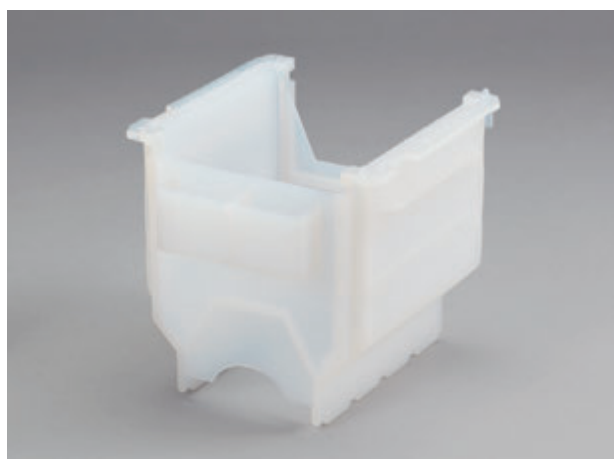
CR125A-IMF-12H (conductive PFA-BC)

Capacity	12
Dimension	152mm × 143mm × 146mm
D <sub>1</sub> dimension	16.32mm
Pocket pitch	9.5mm
Pocket flat	5.08mm
Compatible box	BX125 • BX125-03
Compatible handle	CH5-3 • CH5-3L



- H-shaped end for equipment interface.
- U-shaped end wall.
- Wash slots in sidewalls to improve cleaning, draining and drying effect.
- Accommodates thick wafer and round substrate.
- Conductive PFA-BC available.

## CR125A-BMF-H PFA

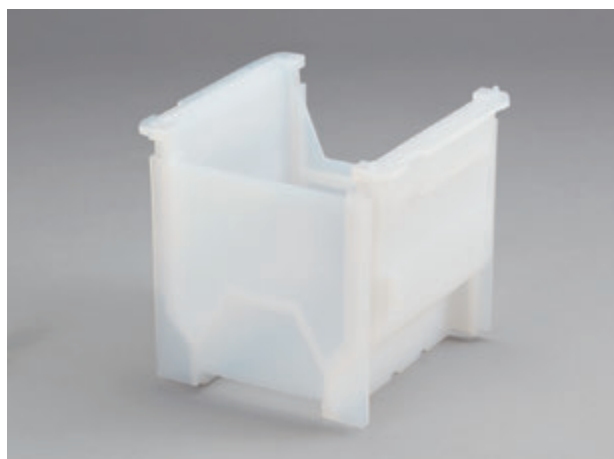


CR125A-BMF-H

Capacity	25
Dimension	152mm × 143mm × 146mm
D <sub>1</sub> dimension	14.54mm
Pocket pitch	4.76mm
Pocket flat	1.52mm
Compatible box	BX125
Compatible handle	CH5-3 • CH5-3L

- H-shaped end for equipment interface.
- E-shaped handle on end wall.
- Wash slots in sidewalls to improve cleaning, draining and drying effect.

## CR125A-EMF PFA

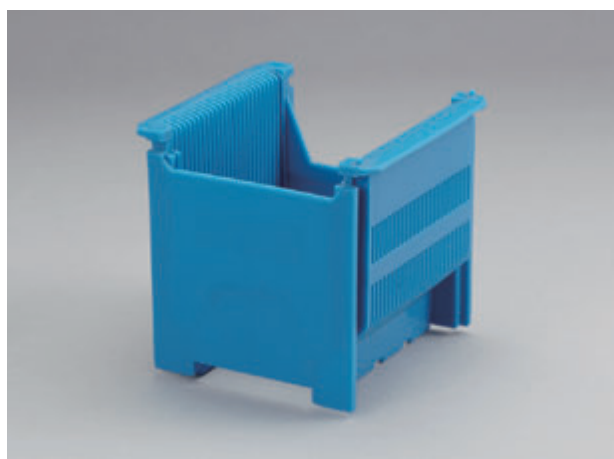


CR125A-EMF

Capacity	25
Dimension	152mm × 144mm × 146mm
D <sub>1</sub> dimension	14.8mm
Pocket pitch	4.76mm
Pocket flat	1.52mm
Compatible box	BX125-03
Compatible handle	CH5-3 • CH5-3L

- H-shaped end for equipment interface.
- Solid end wall.
- Wash slots in sidewalls to improve cleaning, draining and drying effect.

## CR125A-HMF PFA



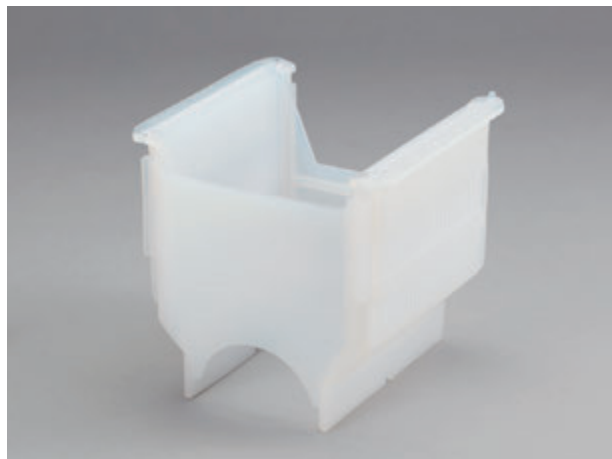
CR125A-HMF (Non-standard color example)

Capacity	25
Dimension	152mm × 143mm × 146mm
D <sub>1</sub> dimension	14.54mm
Pocket pitch	4.76mm
Pocket flat	1.52mm
Compatible box	BX125 • BX125-03
Compatible handle	CH5-3 • CH5-3L

- H-shaped end for equipment interface.
- Solid end wall.
- Wash slots in sidewalls to improve cleaning, draining and drying effect.



## CR125A-MMF PFA

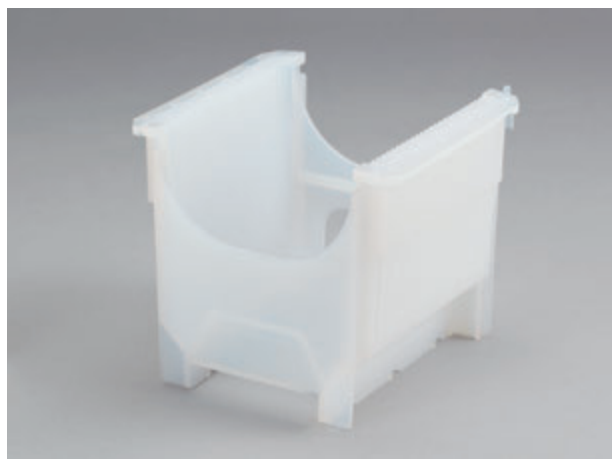


CR125A-MMF

Capacity	25
Dimension	152mm × 143mm × 146mm
D <sub>1</sub> dimension	14.40mm
Pocket pitch	4.76mm
Pocket flat	1.52mm
Compatible box	BX125 • BX125-03
Compatible handle	CH5-3 • CH5-3L

- H-shaped end for equipment interface.
- Solid end wall.
- Wash slots in sidewalls to improve cleaning, draining and drying effect.

## CR125A-OMF PFA

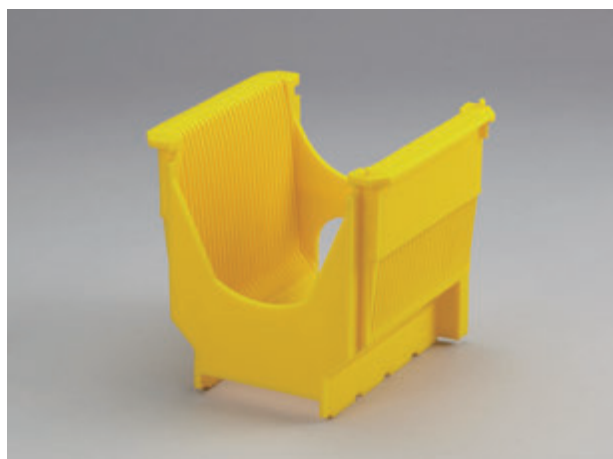


CR125A-OMF

Capacity	25
Dimension	153mm × 142mm × 138mm
D <sub>1</sub> dimension	13.97mm
Pocket pitch	4.76mm
Pocket flat	1.52mm
Compatible box	BX125 • BX125-03
Compatible handle	CH5-3 • CH5-3L

- H-shaped end for equipment interface.
- U-shaped end wall.
- Wash slots in sidewalls to improve cleaning, draining and drying effect.

## CR125A-MMF PFA

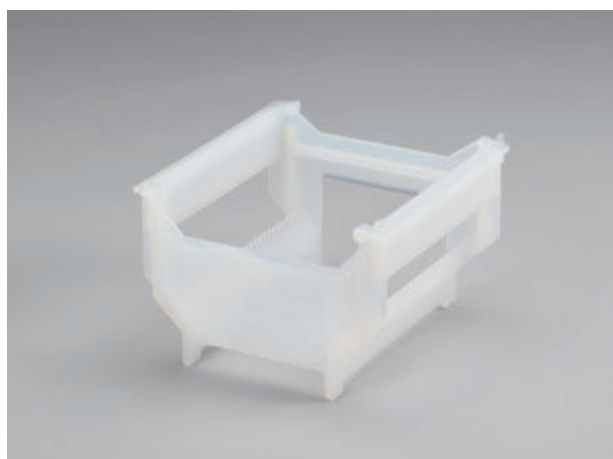


CR125A-MMF (Non-standard color example)

Capacity	25
Dimension	152mm × 142mm × 146mm
D <sub>1</sub> dimension	13.97mm
Pocket pitch	4.76mm
Pocket flat	1.78mm
Compatible box	BX125 • BX125-03
Compatible handle	CH5-3 • CH5-3L

- H-shaped end for equipment interface.
- U-shaped end wall.
- Wash slots in sidewalls to improve cleaning, draining and drying effect.

## CR125L-26LF PFA



CR125L-26LF

Capacity	26
Dimension	141mm × 143mm × 95mm
D <sub>1</sub> dimension	13.97mm
Pocket pitch	4.76mm
Pocket flat	1.0mm
Compatible handle	CH5-3 • CH5-3L

- H-shaped end for equipment interface.
- Wide openings in sidewalls to improve cleaning, draining and drying effect.
- Light weight for easy handling.

## CR125A-CBS PEEK



CR125A-CBS

Capacity	25
Dimension	152mm × 144mm × 146mm
D <sub>1</sub> dimension	14.54mm
Pocket pitch	4.76mm
Pocket flat	1.52mm
Compatible box	BX125DSW

- H-shaped end for equipment interface.
- Solid end wall.
- Wash slots in sidewalls.
- Excellent heat resistance and rigidity. Ideal for use in high temperature applications such as wafer baking, diffusion and CVD.

## CR125A-CBS-H PEEK



CR125A-CBS-H

Capacity	25
Dimension	152mm × 144mm × 146mm
D <sub>1</sub> dimension	14.54mm
Pocket pitch	4.76mm
Pocket flat	1.52mm
Compatible box	BX125DSW

- H-shaped end for equipment interface.
- E-shaped handle on end wall.
- Wash slot in sidewalls.
- Excellent heat resistance and rigidity. Ideal for use in high temperature applications such as wafer baking, diffusion and CVD.

## CR125A-02SF-W Stat Free-1 (antistatic PBT alloy)



CR125A-02SF-W

Capacity	25
Dimension	153mm × 142mm × 138mm
D <sub>1</sub> dimension	13.97mm
Pocket pitch	4.76mm
Pocket flat	1.52mm
Compatible box	BX125 • BX125DSW

- H-shaped end for equipment interface.
- U-shaped end wall.
- No wash slot in sidewalls.
- Sustains almost permanent antistatic effect.  
Metal-free conductive material eliminates contamination to wafer.
- Enhanced stability for horizontal wafer handling.

## CR125A-06SF-HW Stat Free-1 (antistatic PBT alloy)

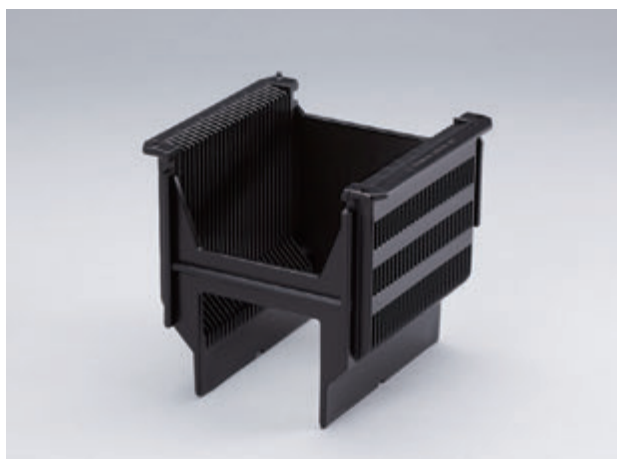


CR125A-06SF-HW

Capacity	25
Dimension	152mm × 145mm × 146mm
D <sub>1</sub> dimension	16.23mm
Pocket pitch	4.76mm
Pocket flat	1.54mm
Compatible box	BX125-03

- H-shaped end for equipment interface.
- Handle on end wall.
- No wash slot in sidewalls.
- Sustains almost permanent antistatic effect.  
Metal-free conductive material eliminates contamination to wafer.
- Enhanced stability for horizontal wafer handling.

## CR125A-PPA antistatic Polypropylene, conductive Polypropylene



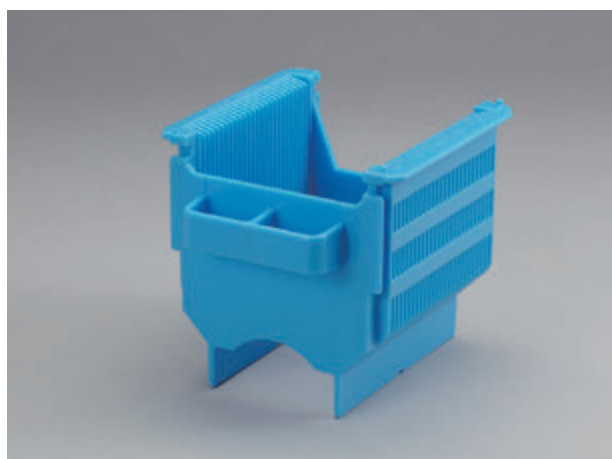
CR125A-PPA(conductive PP)

Capacity	25
Dimension	152mm × 143mm × 146mm
D <sub>1</sub> dimension	14.53mm
Pocket pitch	4.76mm
Pocket flat	1.53mm
Compatible box	BX125-03PA • BX125DSW



- H-shaped end for equipment interface.
- Solid end wall.
- Wash slots in sidewalls.
- Enhanced stability for horizontal wafer handling.

## CR125A-PPA-H-BLU antistatic Polypropylene, conductive Polypropylene

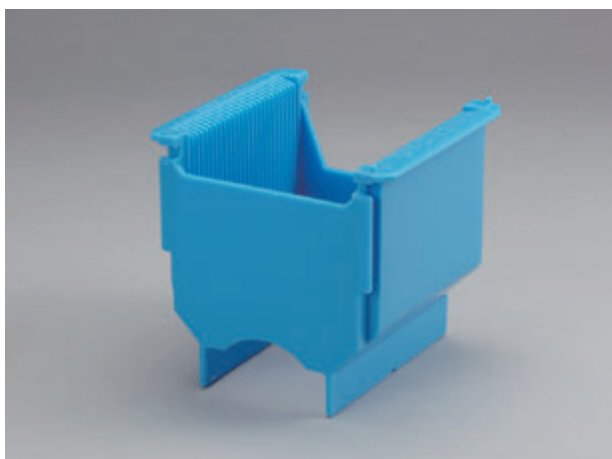


CR125A-PPA-H-BLU(Non-standard color example)

Capacity	25
Dimension	152mm × 143mm × 146mm
D <sub>1</sub> dimension	14.53mm
Pocket pitch	4.76mm
Pocket flat	1.53mm
Compatible box	BX125-03 • BX125DSW

- H-shaped end for equipment interface.
- E-shaped handle on end wall.
- Wash slots in sidewalls.

## CR125A-PPA-1 antistatic Polypropylene



CR125A-PPA-1 (Non-standard color example)

Capacity	25
Dimension	152mm × 143mm × 146mm
D <sub>1</sub> dimension	14.54mm
Pocket pitch	4.76mm
Pocket flat	1.53mm
Compatible box	BX125-03 • BX125DSW

- H-shaped end for equipment interface.
- Solid end wall.
- No wash slot in sidewalls.
- Enhanced stability for horizontal wafer handling.

## CR125A-PPA-1H antistatic Polypropylene



CR125A-PPA-1H

Capacity	25
Dimension	152mm × 143mm × 146mm
D <sub>1</sub> dimension	14.54mm
Pocket pitch	4.76mm
Pocket flat	1.53mm
Compatible box	BX125-03 • BX125DSW

- H-shaped end for equipment interface.
- E-shaped handle on end wall.
- No wash slot in sidewalls.
- Enhanced stability for horizontal wafer handling.

## CR125C-BPB conductive Polypropylene



CR125C-BPB

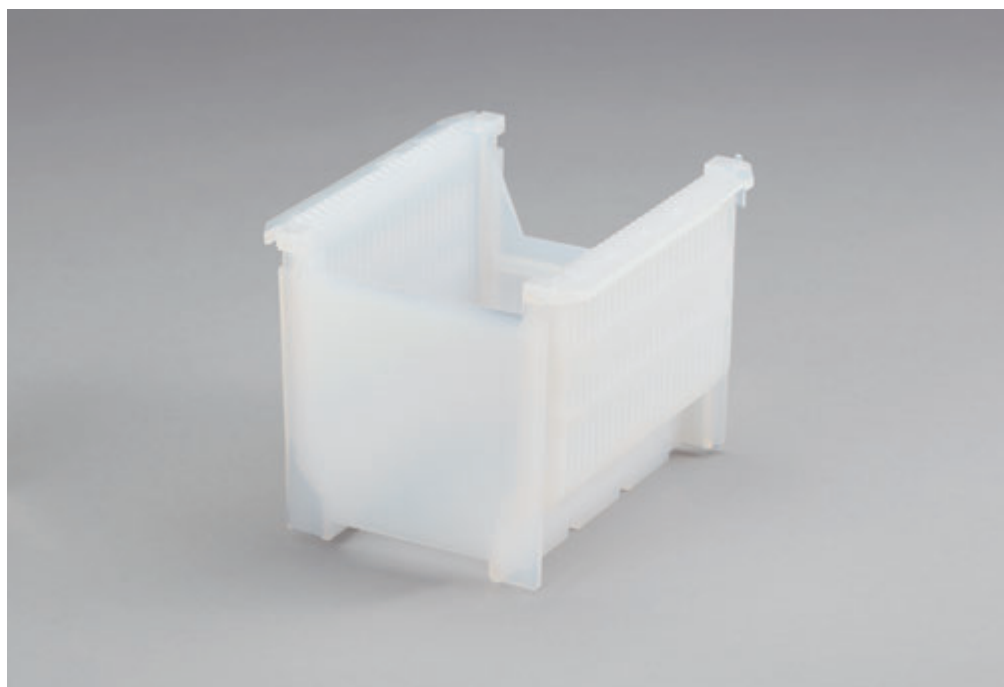
Capacity	25
Dimension	153mm × 143mm × 146mm
D <sub>1</sub> dimension	13.97mm
Pocket pitch	4.76mm
Pocket flat	1.52mm



- H-shaped end for equipment interface.
- Vertical handle on end wall.
- Solid sidewalls.



# CR100A-AMF PFA



CR100A-AMF

Capacity	25
Dimension	125mm × 143mm × 114mm
D <sub>1</sub> dimension	14.3mm
Pocket pitch	4.76mm
Pocket flat	1.52mm
Compatible box	BX100-PA-P3-P4
Compatible handle	CH4-3

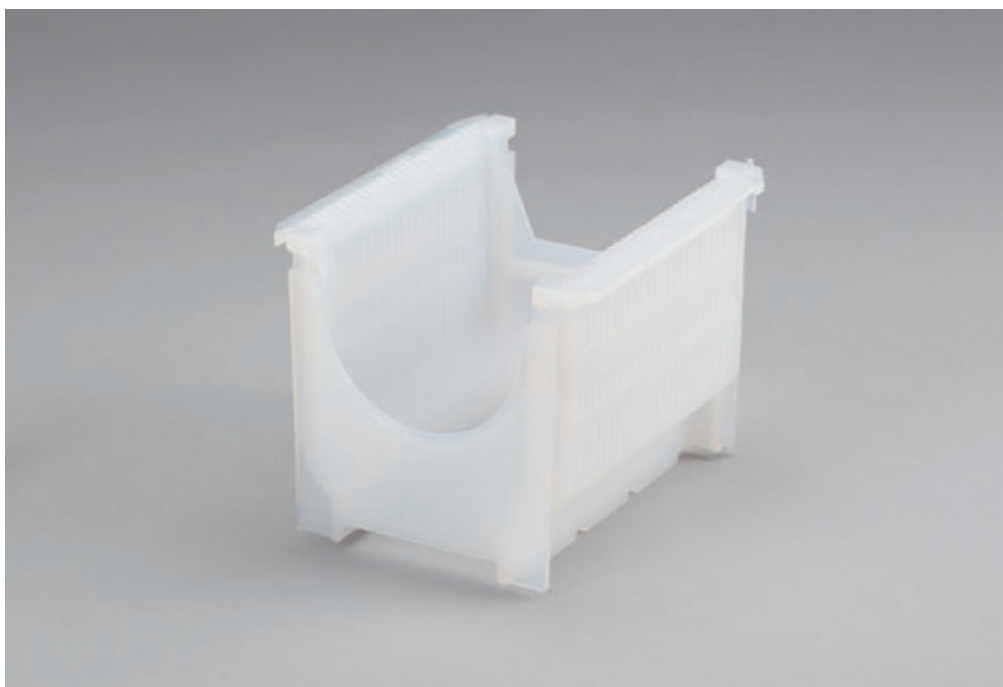
- H-shaped end for equipment interface.
- Solid end wall.
- Wash slots in sidewalls to improve cleaning, draining and drying effect.

Box

RSP

Mask  
CaseChip  
TrayOther  
ProductsTechnical  
Info

# CR100A-DMF PFA



CR100A-DMF

Capacity	25
Dimension	125mm × 143mm × 114mm
D <sub>1</sub> dimension	14.3mm
Pocket pitch	4.76mm
Pocket flat	1.52mm
Compatible box	BX100-PA-P3-P4
Compatible handle	CH4-3

- H-shaped end for equipment interface.
- U-shaped end wall.
- Wash slots in sidewalls to improve cleaning, draining and drying effect.

## CR100A-CMF PFA

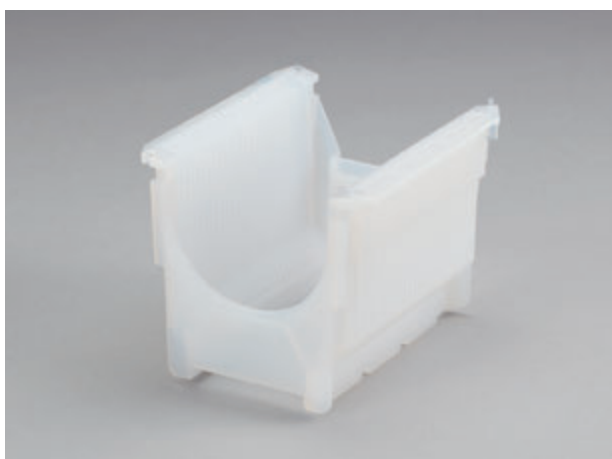


CR100A-CMF

Capacity	25
Dimension	125mm × 143mm × 114mm
D <sub>1</sub> dimension	14.3mm
Pocket pitch	4.76mm
Pocket flat	1.52mm
Compatible box	BX100-PA-P3-P4
Compatible handle	CH4-3

- H-shaped end for equipment interface.
- Solid end wall.
- Wash slots in sidewalls to improve cleaning, draining and drying effect.

## CR100A-04-01HS-LF PFA

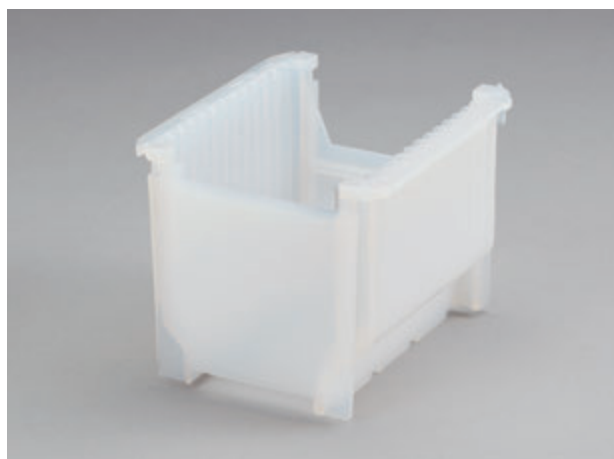


CR100A-04-01HS-LF

Capacity	25
Dimension	125mm × 143mm × 114mm
D <sub>1</sub> dimension	13.97mm
Pocket pitch	4.76mm
Pocket flat	1.52mm

- H-shaped end for equipment interface.
- U-shaped end wall.
- Wash slots in sidewalls to improve cleaning, draining and drying effect.

## CR100A-BMF PFA



CR100A-BMF

Capacity	12
Dimension	125mm × 143mm × 114mm
D <sub>1</sub> dimension	21.26mm
Pocket pitch	9.5mm
Pocket flat	6.28mm
Compatible box	BX100-PA-P3-P4
Compatible handle	CH4-3

- H-shaped end for equipment interface.
- Solid end wall.
- Solid sidewalls.
- Accommodates thick wafer and round substrate.

## CR100A-EMF PFA



CR100A-EMF

Capacity	12
Dimension	125mm × 143mm × 114mm
D <sub>1</sub> dimension	20.9mm
Pocket pitch	9.5mm
Pocket flat	6.28mm
Compatible box	BX100-PA-P3-P4
Compatible handle	CH4-3

- H-shaped end for equipment interface.
- U-shaped end wall.
- Wash slots in sidewalls to improve cleaning, draining and drying effect.
- Accommodates thick wafer and round substrate.

## CR100C-02SF Stat Free-1 (antistatic PBT alloy)

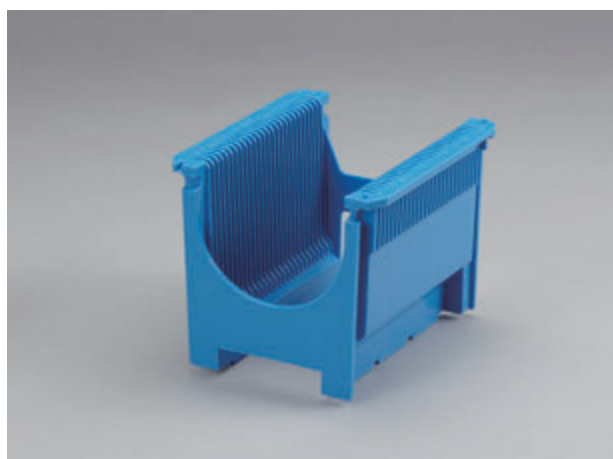


CR100C-02SF

Capacity	25
Dimension	126mm × 142mm × 114mm
D <sub>1</sub> dimension	13.97mm
Pocket pitch	4.76mm
Pocket flat	1.80mm
Compatible box	BX100-PA-P3-P4

- H-shaped end for equipment interface.
- Solid end wall.
- No wash slot in sidewalls.
- Sustains almost permanent antistatic effect.  
Metal-free conductive material eliminates contamination to wafer.
- Enhanced stability for horizontal wafer handling.

## CR100C-01PA-W antistatic Polypropylene



CR100C-01PA-W (Non-standard color example)

Capacity	25
Dimension	126mm × 142mm × 114mm
D <sub>1</sub> dimension	13.97mm
Pocket pitch	4.76mm
Pocket flat	1.80mm
Compatible box	BX100-PA-P3-P4

- H-shaped end for equipment interface.
- U-shaped end wall.
- No wash slot in sidewalls.

## CR100C-APA antistatic Polypropylene

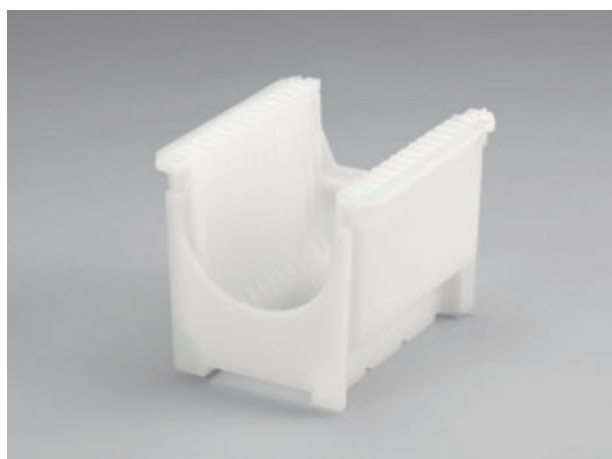


CR100C-APA

Capacity	25
Dimension	125mm × 142mm × 114mm
D <sub>1</sub> dimension	13.97mm
Pocket pitch	4.76mm
Pocket flat	1.52mm
Compatible box	BX100-PA-P3-P4

- H-shaped end for equipment interface.
- U-shaped end wall.
- Wash slots in sidewalls.

## CR100C-FPA antistatic Polypropylene



CR100C-FPA

Capacity	12
Dimension	125mm × 142mm × 114mm
D <sub>1</sub> dimension	16.68mm
Pocket pitch	9.5mm
Pocket flat	6.28mm
Compatible box	BX100-PA-P3-P4

- H-shaped end for equipment interface.
- U-shaped end wall.
- Solid sidewalls.
- Accommodates thick wafer and round substrate.

# CR100C-CPA antistatic Polypropylene, conductive Polypropylene



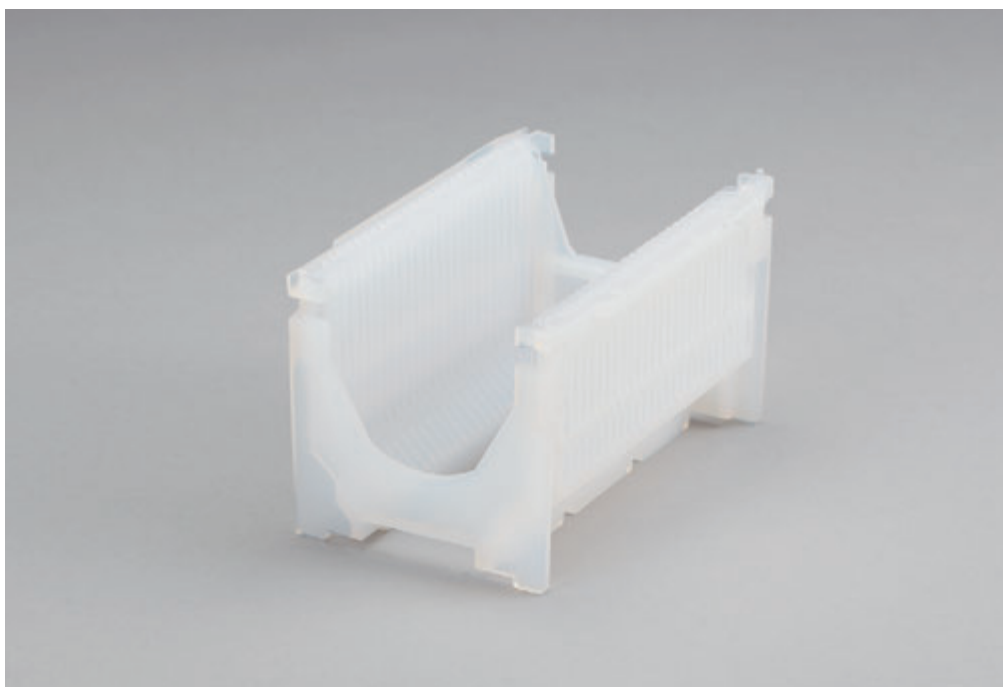
CR100C-CPA (conductive PP)

Capacity	25
Dimension	125mm × 142mm × 114mm
D <sub>1</sub> dimension	13.97mm
Pocket pitch	4.76mm
Pocket flat	1.52mm
Compatible box	BX100-PA-P3-P4

- H-shaped end for equipment interface.
- Solid end wall.
- Wash slots in sidewalls.



# CR75C-01LF PFA

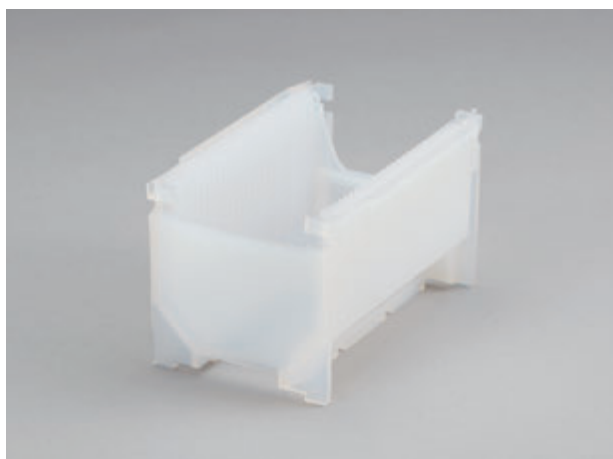


CR75C-01LF

Capacity	25
Dimension	94mm × 142mm × 83mm
D <sub>1</sub> dimension	13.97mm
Pocket pitch	4.76mm
Pocket flat	1.52mm

- H-shaped end for equipment interface.
- U-shaped end wall.
- Wash slots in sidewalls to improve cleaning, draining and drying effect.
- ID Tag, ID75-01 (P120) can be attached.

## CR75-AFB PFA, PFA-BC

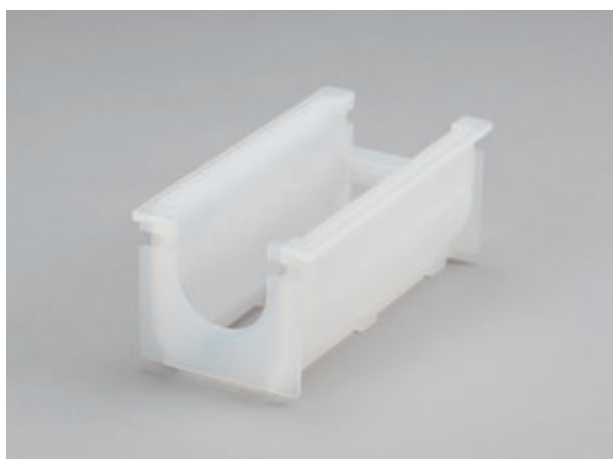


CR75-AFB (PFA)

Capacity	25
Dimension	94mm × 142mm × 83mm
D <sub>1</sub> dimension	13.97mm
Pocket pitch	4.76mm
Pocket flat	1.52mm

- H-shaped end for equipment interface.
- Solid end wall.
- No wash slot in sidewalls.
- ID Tag, ID75-01 (P120) can be attached.

## CR055-50-01 PFA

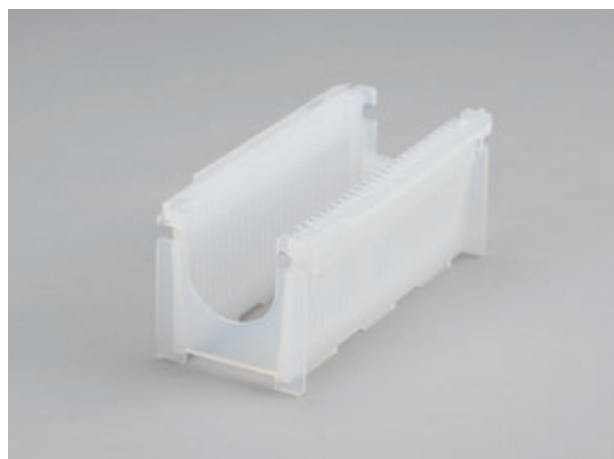


CR055-50-01

Capacity	50
Dimension	72mm × 145mm × 60mm
D <sub>1</sub> dimension	11.74mm
Pocket pitch	2.48mm
Pocket flat	0.64mm

- H-shaped end for equipment interface.
- U-shaped end wall.
- Wash slots in sidewalls to improve cleaning, draining and drying effect.

## CR50A-01LF PFA

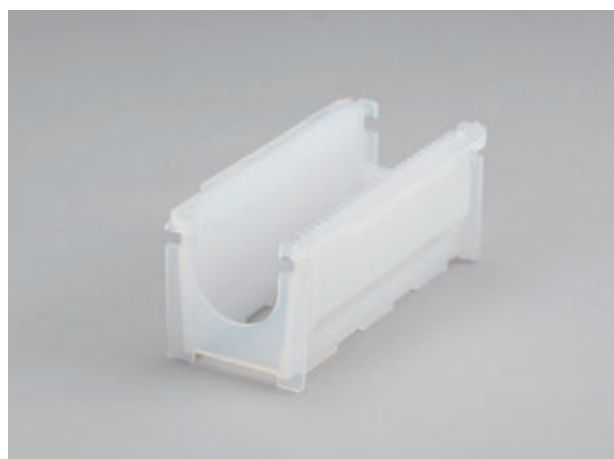


CR50A-01LF

Capacity	25
Dimension	68mm × 143mm × 59mm
D <sub>1</sub> dimension	13.97mm
Pocket pitch	4.76mm
Pocket flat	1.02mm

- H-shaped end for equipment interface.
- U-shaped end wall.
- Wash slots in sidewalls.

## CR50C-MF PFA



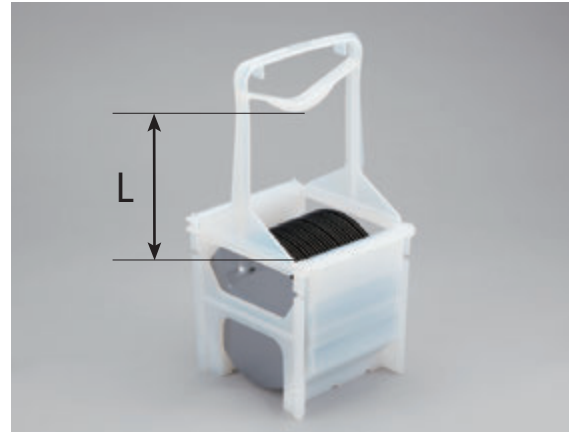
CR50C-MF

Capacity	25
Dimension	68mm × 142mm × 59mm
D <sub>1</sub> dimension	13.97mm
Pocket pitch	4.76mm
Pocket flat	1.02mm

- H-shaped end for equipment interface.
- U-shaped end wall.
- No wash slot in sidewalls.

# Wafer Carrier Handle 200mm (8inch)/150mm (6inch)

- Apply pressure to the center of the two cross members and squeeze to separate the struts, allowing easy engagement and disengagement from the carrier.
- Attach to the notches on both end walls of the carrier.



## 200mm Wafer Carrier Handle (8inch)

**CH200-HP** PFA



CH200-HP (L=170)

**CH8-3** PFA



CH8-3 (L=133)

**CH8-3L** PFA



CH8-3L (L=133)

## 150mm Wafer Carrier Handle (6inch)

**CH6-3** PFA



CH6-3 (L=125)

**CH6-3L** PFA



CH6-3L (L=185)

# Wafer Carrier Handle 125mm (5inch)/100mm (4inch)

- Apply pressure to the center of the two cross members and squeeze to separate the struts, allowing easy engagement and disengagement from the carrier.
- Attach to the notches on both end walls of the carrier.

Please contact us for handle for 75mm and 50mm wafer carrier.



## 125mm Wafer Carrier Handle (5inch)

### CH5-3 PFA



CH5-3 (L=125)

### CH5-3L PFA



CH5-3L (L=164)

## 100mm Wafer Carrier Handle (4inch)

### CH4-3 PFA



CH4-3 (L=125)

# Boxes

---



# Box Ordering Information

DAINICHI SHOJI K.K.

The following ordering policy applies to order for box.

Please contact us for an order for less than minimum order quantity or non-standard colors.

## ■ Box

Material	Minimum Order Quantity	Standard Colors
antistatic Polypropylene	50	Natural
conductive Polypropylene	50	Black
Stat Free-2 (antistatic ABS alloy)	50	Clear (bluing)
Stat Free-1 (antistatic PBT alloy)	50	Natural

- Please see Carrier pages for compatibility of box.
- Please confirm prior to use as to compatible carrier.



## BX200-01/BX200-02



BX200-01

Part No.	BX200-01	BX200-02
Material	Stat Free-1	
	Stat Free-2	
Capacity	1	
Dimension	209mm × 226mm × 205mm	

- Bottom plane of box bottom is tilted at a 5° angle.
- Wafers in the wafer carrier rest on their back sides.
- Separate box top and bottom facilitate cleaning.
- Stackable.
- TR200-H6 (P118) Traveler can be attached onto the box top.
- Optional CC-08-01 (P118) Card Holder, BX200DS-NV-6 (P120) Card Case can be attached.

## BX200-12-C007



BX200-12-C007

Material	Stat Free-2
	conductive Polypropylene
Capacity	1
Dimension	286mm × 280mm × 259mm

- Bottom plane of box bottom is tilted at a 4° angle.
- Wafers in the wafer carrier rest on their back sides.
- 3 hinges and 1 snap latch on front.
- Stackable.
- Process control card holder on the top surface of the box cover.
- Optional card holder on the box bottom and silicon rubber gasket available.

## BX200H



BX200H (Non-standard color example)

Material	antistatic Polypropylene
Capacity	1
Dimension	266mm × 270mm × 257mm

- Bottom plane of box bottom is tilted at a 5° angle.
- Wafers in the wafer carrier rest on their back sides.
- 2 hinges and 1 snap latch on front.
- Tape able for sealing and stackable.

## BX200DS



BX200DS (conductive Polypropylene)

Material	antistatic Polypropylene
	conductive Polypropylene
Capacity	1
Dimension	300mm × 300mm × 260mm

- Bottom plane of box bottom is tilted at a 5° angle.
- Wafers in the wafer carrier rest on their back sides.
- Separate box top and bottom facilitate cleaning.
- Stackable.
- TR200-H6 (P118) Traveler can be attached onto the box top.
- Optional CC-08-01 (P118) Card Holder, BX200DS- NV-6 (P120) Card Case can be attached.

## BX150

Material	Stat Free-1、Stat Free-2
	antistatic Polypropylene、 conductive Polypropylene
Capacity	1
Dimension	216mm × 196mm × 194mm

- Bottom plane of box bottom is tilted at a 5° angle.
- Wafers in the wafer carrier rest on their back sides.
- Separate box top and bottom facilitate cleaning.
- Process control card holder on the top surface of the box cover.
- Stackable.



BX150 (Non-standard color example)

## BX150-09-C001

Material	Stat Free-2
	conductive Polypropylene
Capacity	1
Dimension	220mm × 228mm × 189mm

- Bottom plane of box bottom is tilted at a 5° angle.
- Wafers in the wafer carrier rest on their back sides.
- 2 hinges and 1 snap latch on front.
- Stackable.



BX150-09-C001 (conductive Polypropylene)

## BX150H

Material	antistatic Polypropylene
Capacity	1
Dimension	205mm × 200mm × 190mm

- Bottom plane of box bottom is tilted at a 5° angle.
- Wafers in the wafer carrier rest on their back sides.
- 1 snap latch on both sides.
- Tape able for sealing and stackable.



BX150H (Non-standard color example)

## BX150-27-C001

Material	Stat Free-2
Capacity	1
Dimension	216mm × 196mm × 199mm

- Bottom plane of box bottom is tilted at a 5° angle.
- Wafers in the wafer carrier rest on their back sides.
- Separate box top and bottom facilitate cleaning.
- Process control card holder on the top surface of the box cover.
- Stackable.



BX150-27-C001 (Non-standard color example)

## BX150-04NV

Material	Stat Free-2
Capacity	1
Dimension	218mm × 203mm × 194mm

- Bottom plane of box bottom is tilted at a 5° angle.
- Wafers in the wafer carrier rest on their back sides.
- Separate box top and bottom facilitate cleaning.
- Process control card holder on the top surface of the box cover.
- Stackable.



BX150-04NV (Non-standard color example)

## BX150-SF-UK

Material	Stat Free-1
Capacity	2
Dimension	430mm × 250mm × 207mm

- 2 hinges and 1 latches on front.
- Process control card holder on the top surface of the box cover.
- Stackable.



BX150-SF-UK (Non-standard color example)

## BX150W-01

Material	Stat Free-1
	Stat Free-2
Capacity	2
Dimension	428mm × 249mm × 185mm

- 2 hinges and 2 snap latches on front.
- Process control card holder on the top surface of the box cover.
- Stackable.



BX150W-01

## BX150W-02

Material	Stat Free-1、antistatic Polypropylene、 conductive Polypropylene
Capacity	2
Dimension	425mm × 242mm × 209mm

- Bottom plane of box bottom is tilted at a 5° angle.
- Wafers in the wafer carrier rest on their back sides.
- 2 hinges and 2 latches on front.
- Stackable.



BX150W-02

## BX150W-PA-2F

Material	Stat Free-1 antistatic Polypropylene
Capacity	2
Dimension	435mm × 250mm × 196mm

- Separate box top and bottom facilitate cleaning.
- Process control card holder on the top surface of the box cover.
- Stackable.



BX150W-PA-2F

## BX125

Material	Stat Free-1、Stat Free-2、 antistatic Polypropylene
Capacity	1
Dimension	172mm × 182mm × 165mm

- Bottom plane of box bottom is tilted at a 5° angle.
- Wafers in the wafer carrier rest on their back sides.
- Separate box top and bottom facilitate cleaning.
- Process control card holder on the top surface of the box cover.
- Stackable.



BX125 (Non-standard color example)

## BX125-03

Material	Stat Free-1、antistatic Polypropylene、 conductive Polypropylene
Capacity	1
Dimension	209mm × 226mm × 205mm

- Bottom plane of box bottom is tilted at a 13° angle.
- Wafers in the wafer carrier rest on their back sides.
- 2 hinges and 1 latch on front.
- Stackable.



BX125-03

## BX125DSW

Material	Stat Free-2 antistatic Polypropylene
Capacity	2
Dimension	377mm × 237mm × 205mm

- Bottom plane of box bottom is tilted at a 5° angle.
- Wafers in the wafer carrier rest on their back sides.
- Separate box top and bottom facilitate cleaning.
- Process control card holder on the top surface of the box cover.
- Stackable.



BX125DSW

## BX100-PA-P3-P4



BX100-PA-P3-P4

Material	Stat Free-2
	antistatic Polypropylene
Capacity	1
Dimension	150mm × 188mm × 138mm

- Separate box top and bottom facilitate cleaning.
- Stackable.

## BX28-PP



BX28-PP

Material	Polypropylene
Capacity	125mm carrier × 6
	150mm carrier × 4
Dimension	510mm × 420mm × 210mm



- Tilted angle on box bottom.
- Wafers in the wafer carrier rest on their back sides.
- Tape able for sealing and stackable.



# RSP

---



## RSP-150 (Reticle SMIF Pod)



RSP-150

- SEMI Standard E111 compliant.
- For 6 inch (152mm) square reticle.
- Selected low outgassing material to protect reticle from haze.
- ESD safe by conductive path structure.
- Material to minimize particle generation for reticle holding part.
- Optional purge valve, outgas removal sheet available.

# RSP-200 (Reticle SMIF Pod)



RSP-200 (Red)



RSP-200 (Black)

- For 6 inch (152mm) square reticle.
- Selected low outgassing material to protect reticle from haze.
- Improved sealability to prevent particle penetration.
- ESD safe by conductive path structure.
- Cover with or without window, clear cover selectable.
- Holds reticle with pellicle on top.
- Optional purge valve, outgas removal sheet available.

# Mask Cases

---



# Mask Case Ordering Information

DAINICHI SHOJI K.K.

The following ordering policy applies to order for mask case.

Please contact us for order for minimum order quantity or non-standard colors.

## ■ Mask Case

Material	Minimum Order Quantity	Standard Colors
antistatic ABS	200	Clear
conductive Polycarbonate	200	Black

## MP6025N-NV-NT antistatic ABS



MP6025N-NV-NT

Mask size	Sq. : 6"(152.4mm)
Mask thickness	0.25"(6.35mm)
Mask Case size (W × L × H)	225mm × 225mm × 41mm
Pellicle	Top and bottom



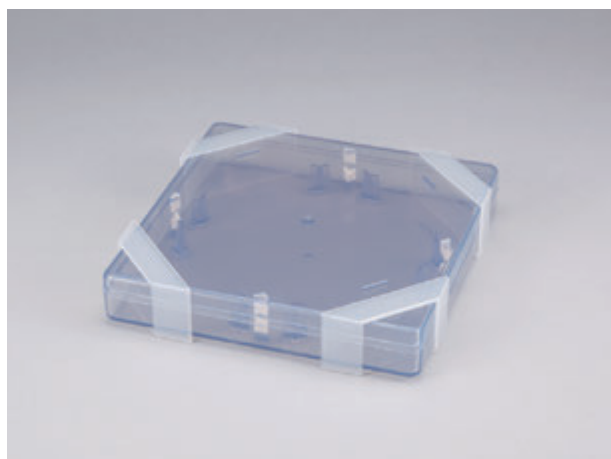
- Mask and reticle are held by silicon rubber.
- Selected clear static protective resin.
- Developed for shipping mask and reticle.
- No-hinge design eliminates potential particle contamination and dedicated clips hold four corners of bottom and cover.
- Bottom and cover mating part is tape able for sealing.

## MR60-25NV-R2 antistatic ABS



MR60-25NV-R2

Mask size	Sq. : 6"(152.4mm)
Mask thickness	0.25"(6.35mm)
Mask Case size (W × L × H)	225mm × 225mm × 41mm
Pellicle	Top and bottom



- Mask and reticle are held by new high performance material.
- Selected clear static protective resin.
- Developed for shipping mask and reticle.
- Dedicated clips hold four corners of bottom and cover.
- Bottom and cover mating part is tape able for sealing.

## MP6025-BPC/MP6025-BPC-1 conductive Polycarbonate



MP6025-BPC

Mask size	Sq. : 6"(152.4mm)
Mask thickness	0.25"(6.35mm)
Mask Case size (W × L × H)	225mm × 225mm × 41mm
Pellicle	Top and bottom



- Selected clear static protective resin.
- Developed for shipping mask and reticle.
- Dedicated clips hold four corners of bottom and cover.
- Bottom and cover mating part is tape able for sealing.
- Holding pin to mount filter at corner part.
- Please let us know if holding pin is necessary or not.

## MP-H6025 Clear antistatic material



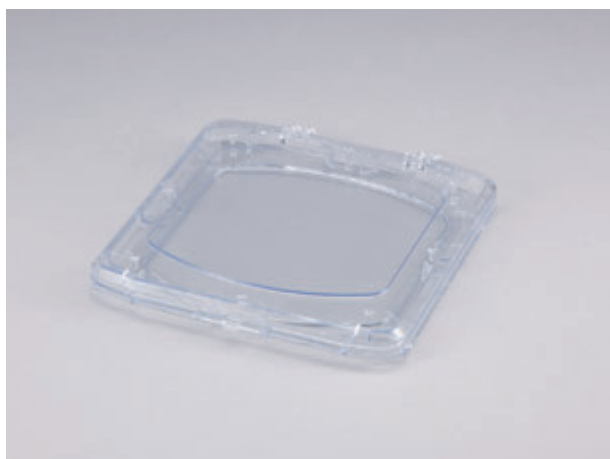
MP-H6025

Mask size	Sq. : 6"(152.4mm)
Mask thickness	0.25"(6.35mm)
Mask Case size (W × L × H)	191mm × 210mm × 42.2mm
Pellicle	Bottom

- Selected clear static protective resin.
- Stackable to minimize storage space.
- Label wall to attach control label.
- Durable hinge securely holds packages.



## MP-H5609 Clear antistatic material



MP-H5609

Mask size	Sq. : 6"(152.4mm)
	Sq. : 5"(127.0mm)
Mask thickness	0.09"(2.29mm)
Mask Case size (W × L × H)	191mm × 210mm × 24.8mm
Pellicle	Without

- Selected clear static protective resin.
- Stackable to minimize storage space.
- Durable hinge securely holds packages.

## MP-H560P Clear antistatic material



MP-H560P

Mask size	Sq. : 6"(152.4mm)
	Sq. : 5"(127.0mm)
Mask thickness	6" 0.09"(2.29mm)
	5" 0.18"(4.57mm)
Mask Case size (W × L × H)	191mm × 210mm × 37.3mm
Pellicle	Bottom

- Selected clear static protective resin.
- Stackable to minimize storage space.
- Label wall to attach control label.
- Durable hinge securely holds packages.

## MP-070P Clear antistatic material



MP-070P (Non-standard color example)

Mask size	Sq. : 7"(177.8mm)
	Round : 7.25"(184.2mm)
Mask thickness	0.15"(3.81mm)
Mask Case size (W × L × H)	216mm × 234mm × 37.2mm
Pellicle	Bottom

- Selected clear static protective resin.
- Stackable to minimize storage space.
- Label wall to attach control label.
- Durable hinge securely holds packages.

## PL900-80012 antistatic ABS



PL900-80012

Mask size	Sq. : 9"(228.6mm)
Mask thickness	0.12"(3.05mm)
Mask Case size (W × L × H)	225mm × 225mm × 41mm
Pellicle	Without

- Selected clear static protective resin.
- Stackable to minimize storage space.

# Chip Trays

---



# Chip Tray Assortment

DAINICHI SHOJI K.K.

The series are available by size.

Series	Size (mm)
CT50 Series	2" × 2" (50.8 × 50.8)
CT50R Series	
CT100 Series	4" × 4" (101.6 × 101.6)
CT100R Series	

※ CT50R and CT100R Series have 3 round corners.

Dimensional tolerances are as follows.

## ■ CT50/CT50R Series

	antistatic ABS	conductive black Polycarbonate
Size (mm)	± 0.05	± 0.05
Thickness (mm)	+0.03/-0.05	+0.03/-0.05
Flatness (mm)	± 0.10	± 0.10
Pocket size (mm)	± 0.05	± 0.05
Pocket pitch (mm)	± 0.05	± 0.05
Surface Resistivity	$10^{10} \sim 10^{12}$	$10^4 \sim 10^7$

※ Above value is not guarantee value. Differs according to the shape.

## ■ CT100/CT100R Series

	antistatic ABS	conductive black Polycarbonate
Size (mm)	± 0.10	± 0.10
Thickness (mm)	± 0.05	± 0.05
Flatness (mm)	± 0.20	± 0.20
Pocket size (mm)	± 0.05	± 0.05
Pocket pitch (mm)	± 0.05	± 0.05
Surface Resistivity	$10^{10} \sim 10^{12}$	$10^4 \sim 10^7$

※ Above value is not guarantee value. Differs according to the shape.

# Chip Tray Ordering Information

DAINICHI SHOJI K.K.

Please order in increments of 100 for CT50 and CT50R Series and 25 for CT100 and CT100R Series.  
Please contact us for order for less than Minimum Order Quantity or non-standard colors.

## ■ CT50/CT50R Series

Material	Minimum Order Quantity	Standard Colors
antistatic ABS	1,000	Natural
conductive black Polycarbonate	1,000	Black

## ■ CT100/CT100R Series

Material	Minimum Order Quantity	Standard Colors
antistatic ABS	200	Natural
conductive black Polycarbonate	200	Black

Please suffix material code to Part No.

antistatic ABS	conductive black Polycarbonate
– TP	– PCBC

Please contact us for other material.

# CT50 Series Chip Tray Square

DAINICHI SHOJI K.K.

## Square Pocket Chip Tray

Part No.	Pocket Size (mm)	Pocket Depth (mm)	Capacity
CT50-004-05	0.41	0.50	1024
CT50-004004-02	0.46	0.23	400
CT50-052052-032	0.52	0.10	400
CT50-057057-05	0.57	0.45	400
CT50-007-09	0.72	0.90	1024
CT50-009009-04	0.89	0.38	400
CT50-013013-06	1.27	0.61	400
CT50-015015-05	1.52	0.46	400
CT50-015-06	1.52	0.61	400
CT50-017017-09	1.65	0.89	100
CT50-018018-06	1.78	0.61	100
CT50-020-09	2.03	0.89	100
CT50-023023-06	2.29	0.61	100
CT50-025-04	2.54	0.41	196
CT50-028-06	2.79	0.61	100
CT50-028028-09	2.79	0.89	100
CT50-030-08	3.00	0.81	121
CT50-032032-12	3.20	1.19	100
CT50-033-04	3.30	0.41	100
CT50-033033-06 ※	3.30	0.60	100
CT50-033033-09	3.30	0.89	100
CT50-038(15°)	3.81	0.41	100
CT50-038038-04(7°)	3.81	0.41	100
CT50-038-09	3.81	0.89	49
CT50-042-04	4.19	0.41	49
CT50-046046-04	4.57	0.41	49
CT50-046046-06	4.57	0.61	49
CT50-053053-06	5.33	0.61	49
CT50-071-04	7.11	0.41	36
• CT50-109-14	10.92	1.40	9

※ Pocket bottom is applied satin finish.

# CT50R Series Chip Tray Square

DAINICHI SHOJI K.K.

## Square Pocket Chip Tray

Part No.	Pocket Size (mm)	Pocket Depth (mm)	Capacity
CT50R-046046-033	0.46	0.325	400
CT50R-005-02	0.46	0.23	400
CT50R-006-03	0.56	0.30	400
CT50R-008-03	0.76	0.25	400
CT50R-009009-04	0.89	0.38	400
CT50R-009-03-NA	0.90	0.28	784
CT50R-012	0.90	0.30	784
CT50R-100100-016	1.00	0.16	256
CT50R-010010-03	1.00	0.25	240
CT50R-011-03	1.14	0.28	400
CT50R-011011-03	1.14	0.30	400
CT50R-013013-06	1.27	0.61	400
CT50R-014014-06	1.40	0.61	400
CT50R-015-04	1.52	0.41	400
CT50R-015-05	1.52	0.46	400
CT50R-015-06	1.52	0.61	400
CT50R-018018-06	1.78	0.61	100
CT50R-200200-17	2.00	1.70	100
CT50R-020-03	2.03	0.28	100
CT50R-020-09	2.03	0.89	100
CT50R-022022-06	2.17	0.61	100
CT50R-023023-04	2.29	0.41	100
CT50R-023023-06	2.29	0.61	100
CT50R-260260-079 ※	2.60	0.79	100
CT50R-028-06	2.79	0.61	100
CT50R-033033-06 ※	3.30	0.60	100
CT50R-033033-09	3.30	0.89	100
CT50R-HS414	3.56	0.41	100
CT50R-036036-15	3.56	1.52	100
CT50R-038038-06	3.81	0.61	100
CT50R-038-09	3.81	0.89	49
CT50R-HS175	4.45	0.81	64
CT50R-046046-06	4.57	0.61	49
CT50R-053053-06	5.33	0.61	49
CT50R-056056-04	5.59	0.41	36

※ Pocket bottom is applied satin finish.

Chip Tray

CT50R Series Chip Tray (Square)

FOUP  
Carriers  
Handles

Box

RSP

Mask  
Case

Chip  
Tray

Other  
Products

Technical  
Info



# CT50R Series Chip Tray

Square

DAINICHI SHOJI K.K.

## ■ Square Pocket Chip Tray

Part No.	Pocket Size (mm)	Pocket Depth (mm)	Capacity
CT50R-056056-09	5.59	0.89	36
CT50R-064064-06	6.35	0.61	36
CT50R-071071-06	7.11	0.61	36
CT50R-076076-08	7.62	0.76	25
CT50R-091091-14	9.14	1.40	16
• CT50R-096096-10	9.58	1.02	16
CT50R-121121-13	12.10	1.30	9
• CT50R-140140-10	14.00	0.99	9
CT50R-215215-10	21.67	1.00	4
CT50R-280290	29.00	0.30	1

※ Pocket bottom is applied satin finish.

FOUP  
Carriers  
Handles

Box

RSP

Mask  
CaseChip  
TrayOther  
ProductsTechnical  
Info

# CT50 Series Chip Tray Rectangular

DAINICHI SHOJI K.K.

## Rectangular Pocket Chip Tray

Part No.	Pocket Size (mm)	Pocket Depth (mm)	Capacity
CT50-004005-02	0.43 × 0.53	0.15	100
CT50-005007-02	0.53 × 0.73	0.15	100
CT50-055070-02	0.55 × 0.70	0.20	200
CT50-070420-04	0.70 × 4.20	0.40	176
CT50-077159-035S	0.77 × 1.59	0.35	300
CT50-009057	0.78 × 5.66	0.50	64
CT50-008061	0.79 × 6.12	0.42	156
CT50-011022-03	1.10 × 2.20	0.30	104
CT50-130100-05	1.30 × 1.00	0.50	400
CT50-135140-060-01	1.35 × 1.40	0.60	100
CT50-140110-10	1.40 × 1.10	1.00	225
CT50-161026-025S	1.61 × 0.26	0.25	300
CT50-018200-03	1.80 × 20.00	0.27	30
CT50-018023-05	1.83 × 2.29	0.45	120
CT50-020030-05	1.96 × 2.96	0.51	154
CT50-020057-06	2.03 × 5.72	0.64	90
CT50-023029	2.29 × 2.92	0.51	180
CT50-023033-05	2.29 × 3.30	0.51	130
CT50-025048-03	2.45 × 4.80	0.30	104
CT50-290450-10	2.90 × 4.50	1.00	70
CT50-030041-05	3.05 × 4.06	0.51	80
CT50-033017-17	3.30 × 1.70	1.65	126
CT50-4041293-89	4.04 × 12.93	0.89	24
CT50-041082-06	4.06 × 8.20	0.64	45
CT50-043094-09	4.32 × 9.40	0.89	28
CT50-044036-06	4.39 × 3.61	0.61	80
CT50-093110-09	9.30 × 11.00	0.85	12
CT50-100019-05	10.00 × 1.90	0.50	60
CT50-135762-102	13.50 × 7.62	1.02	15
CT50-165076-10	16.51 × 7.62	1.02	12
CT50-190290-12	19.00 × 29.00	1.20	2

※ Pocket bottom is applied satin finish.

Chip Tray

CT50 Series Chip Tray (Rectangular)

FOUP  
Carriers  
Handles

Box

RSP

Mask  
Case

Chip  
Tray

Other  
Products

Technical  
Info

# CT50R Series Chip Tray Rectangular

DAINICHI SHOJI K.K.

## Rectangular Pocket Chip Tray

Part No.	Pocket Size (mm)	Pocket Depth (mm)	Capacity
CT50R-006004-02	0.64 × 0.43	0.23	400
CT50R-007005-03	0.66 × 0.50	0.33	400
CT50R-007018	0.67 × 1.83	0.25	240
CT50R-007006-03	0.70 × 0.55	0.32	200
CT50R-070065-012	0.70 × 0.65	0.12	324
CT50R-007015	0.70 × 1.50	0.35	200
CT50R-009005-03	0.91 × 0.50	0.33	400
CT50R-010014-06	1.00 × 1.40	0.60	200
CT50R-010084-05	1.00 × 8.37	0.50	64
CT50R-011013-05	1.13 × 1.28	0.35	400
CT50R-115045-035	1.15 × 0.45	0.35	400
CT50R-012005-03	1.16 × 0.50	0.33	400
CT50R-012010-04	1.20 × 1.00	0.40	400
CT50R-012014	1.20 × 1.40	0.60	306
CT50R-130330-050S	1.30 × 3.30	0.50	253
CT50R-135264-04	1.35 × 2.64	0.40	170
CT50R-014012-06	1.40 × 1.20	0.60	400
CT50R-150352-04	1.50 × 3.52	0.40	170
CT50R-015011-05	1.51 × 1.12	0.50	396
CT50R-016003-03	1.55 × 0.32	0.25	400
CT50R-016165-07	1.60 × 16.51	0.65	30
CT50R-017032-06	1.65 × 3.18	0.64	170
CT50R-017013-04*	1.70 × 1.30	0.36	340
CT50R-018019-05	1.81 × 1.94	0.50	225
CT50R-018023-05	1.83 × 2.29	0.45	120
CT50R-191381	1.91 × 3.81	0.41	170
CT50R-200230-17	2.00 × 2.30	1.70	100
CT50R-020014-04	2.01 × 1.35	0.41	300
CT50R-022042-06	2.20 × 4.20	0.60	104
CT50R-023033-05	2.29 × 3.30	0.51	130
CT50R-025117	2.50 × 11.70	0.90	36
CT50R-025117-14	2.50 × 11.70	1.35	36
CT50R-265165-11	2.65 × 1.65	1.10	165
CT50R-029020-06	2.90 × 2.03	0.64	165
CT50R-029130-09	2.90 × 13.00	0.90	30

※ Pocket bottom is applied satin finish.

Part No.	Pocket Size (mm)	Pocket Depth (mm)	Capacity
CT50R-030028-08	3.00 × 2.80	0.80	110
CT50R-030041-05	3.05 × 4.06	0.51	80
CT50R-035030-12	3.50 × 3.00	1.20	90
CT50R-376215-07	3.76 × 21.54	0.65	20
CT50R-039030-08	3.94 × 2.97	0.81	80
CT50R-041047-09	4.06 × 4.73	0.85	56
CT50R-041185	4.10 × 18.50	1.40	16
CT50R-044036-06	4.39 × 3.61	0.61	80
CT50R-520436-079*	5.20 × 4.36	0.79	49
CT50R-056097-06	5.59 × 9.65	0.61	20
CT50R-58104-015	5.85 × 10.45	0.15	24
CT50R-059118	5.92 × 11.83	0.56	18
CT50R-063030-08	6.30 × 3.00	0.80	60
CT50R-063135-09	6.30 × 13.54	0.89	15
CT50R-64104-015	6.45 × 10.45	0.15	24
CT50R-065073-06	6.50 × 7.32	0.61	25
CT50R-071091-13	7.11 × 9.14	1.27	20
CT50R-072120-03	7.20 × 12.00	0.30	12
CT50R-077120-03	7.70 × 12.00	0.30	12
CT50R-080176	8.07 × 17.64	0.49	8
CT50R-083004-04	8.25 × 0.40	0.40	64
CT50R-096175	9.60 × 17.50	0.70	8
CT50R-097056-15	9.65 × 5.59	1.50	20
CT50R-100090-03	10.00 × 9.00	0.35	12
CT50R-100090-07	10.00 × 9.00	0.70	12
CT50R-116118	12.01 × 11.80	0.58	9
CT50R-128135	12.80 × 13.50	0.58	9
CT50R-165076-10	16.51 × 7.62	1.02	12
CT50R-348033-09	34.75 × 3.27	0.88	10

※ Pocket bottom is applied satin finish.

FOUP  
Carriers  
Handles

Box

RSP

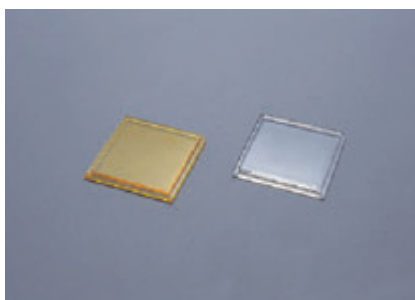
Mask  
Case

Chip  
Tray

Other  
Products

Technical  
Info

# CT50/CT50R Series Chip Tray Cover

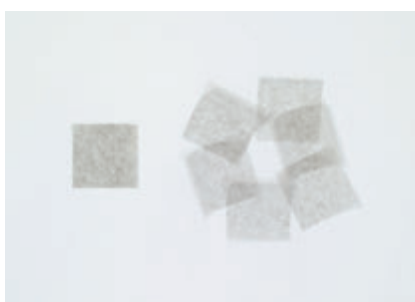


(Left) CT50-02-AMB  
(Right) CT50-02-CLR

Part No.	Material
CT50-02-AMB	Amber styrene
CT50-02-CLR	Clear styrene
CT50-02-PCBC	Black conductive polycarbonate
CT50-02-NV	antistatic ABS alloy
CT50-02-TP	antistatic ABS
CT50R-02-AMB	Amber styrene
CT50R-02-CLR	Clear styrene
CT50R-02-PCBC	Black conductive polycarbonate
CT50R-02-NV	antistatic ABS alloy
CT50R-02-TP	antistatic ABS

- For CT50 Series and CT50R Series trays.
- Cover Size : 2" × 2"  
(50.8mm × 50.8mm × 4.0mm T )

## CT50/CT50R Series Chip Tray Antistatic Polyethylene Film

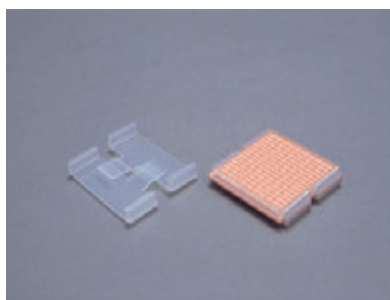


CU105A

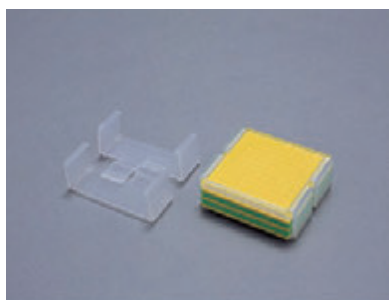
Part No.	CU105A
Material	Conductive Film (packaged in lots of 500 pcs)
Size (H×L×T mm)	45.0mm Sq. ± 1.0mm × 0.04mm T

- Antistatic polyethylene film will nest between CT50 Series trays, between CT50R Series trays or between chip trays and cover.
- Conductive fibers are uniformly dispersed throughout a polyethylene film to enhance antistatic performance.

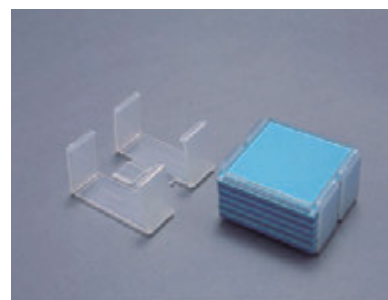
## CT50/CT50R Series Chip Tray Clips



CT50-04



CT50-041



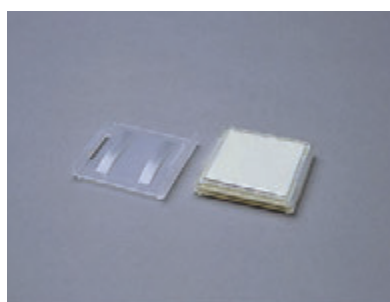
CT50-CL02

Part No.	Material	Capacity
CT50-04	Natural polypropylene	1 tray and 1 cover
CT50-041		5 trays and 1 cover
CT50-CL02		10 trays and 1 cover

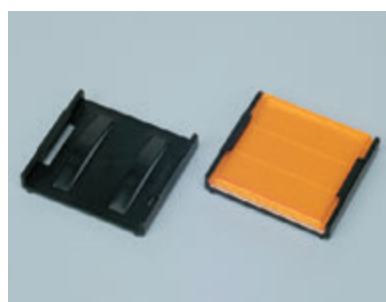
- For CT50 Series or CT50R Series trays and covers.
- Securely holds tray on tray or cover on tray.
- Interlocking tabs press on the center of the tray to ensure good contact between tray and cover.

Clip is sold by the pair.

## CT50/CT50R Series Chip Tray Clips



CT50-04B



CT50-04B-PPBC

Part No.	Material	Capacity
CT50-04B	Natural polypropylene	1 tray and 1 cover
CT50-04B-PPBC	Black conductive polypropylene	

- For CT50 Series or CT50R Series trays and covers.
- Securely holds tray on tray or cover on tray. Push tray and cover in the grooves on both sides of the clip. Two springs on the clip bottom ensure good contact between tray and cover.
- Size : 55.30mm × 50.29mm × 10.87mm T

# CTC-13 CT50/CT50R Series Chip Tray Box



CTC-13

Capacity	13 chip trays/12 chip trays • 1 cover
Box size	38mm × 54mm × 55mm

- For storage and transport of chips or wafers.
- Cannot accommodate 13 trays if CU105A (P102) antistatic film is nested between trays.

# CT100/CT100R Series Chip Tray Square

DAINICHI SHOJI K.K.

## ■ Square Pocket Chip Tray

Part No.	Pocket Size (mm)	Pocket Depth (mm)	Capacity
CT100R-014014-06	1.40	0.61	1600
CT100R-270270-08*	2.70	0.79	400
CT100-056	5.59	3.30	100
CT100R-605605-10*	6.05	0.99	144
CT100-066	6.60	2.54	100
• CT100-127127-25	12.70	2.54	36
• CT100-152152-25	15.24	2.54	25
CT100R-152152-25-PPBC	15.24	2.54	25
• CT100-187-09*	18.70	0.90	16
• CT100-192192-15	19.15	1.53	16
• CT100-203	20.30	0.81	9
• CT100-250-08	25.00	0.80	9
CT100-400-20	40.00	2.00	4

※ Pocket bottom is applied satin finish.



# CT100/CT100R Series Chip Tray Rectangular

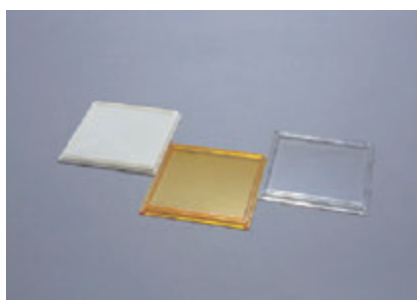
DAINICHI SHOJI K.K.

## Rectangular Pocket Chip Tray

Part No.	Pocket Size (mm)	Pocket Depth (mm)	Capacity
CT100R-165310-185	1.65 × 3.10	1.85	357
CT100R-2001220-325	2.00 × 12.20	3.25	108
CT100-026039-09	2.59 × 3.94	0.89	300
CT100R-028033-20*	2.80 × 3.25	2.00	256
CT100-028100-08	2.84 × 10.00	0.76	140
CT100-035033-04	3.51 × 3.33	0.13	289
CT100R-049061-08*	4.94 × 6.13	0.79	143
CT100R-610550-13	6.10 × 5.50	1.30	132
CT100-074056-06	7.37 × 5.59	0.61	99
CT100-075080-15	7.50 × 8.00	1.50	56
CT100-089097-04	8.90 × 9.70	0.40	56
CT100-090067-06	9.04 × 6.73	0.61	80
CT100R-110118-25-PPBC	11.00 × 11.80	2.54	36
CT100R-125085	12.50 × 8.50	1.70	48
RM804-069-03-PPBC	13.20 × 8.00	2.54	45
RM084-068-03-PPBC	13.20 × 14.70	2.54	30
CT100-134150-09	13.36 × 14.96	0.85	30
CT100-142114-08 *	14.20 × 11.36	0.80	30
CT100R-15.4-11.2	16.10 × 11.90	1.40	24
CT100R-16.7-10.6	17.50 × 11.40	1.80	24
CT100R-16.7-14.5	17.50 × 15.30	1.80	16
CT100R-17.2-9.1	17.90 × 9.80	1.40	24
CT100-203243	20.30 × 24.30	0.81	9
CT100R-214144-35	21.40 × 14.40	3.50	15
CT100R-270027-08	27.00 × 2.70	0.75	57

※ Pocket bottom is applied satin finish.

# CT100/CT100R Series Chip Tray Cover

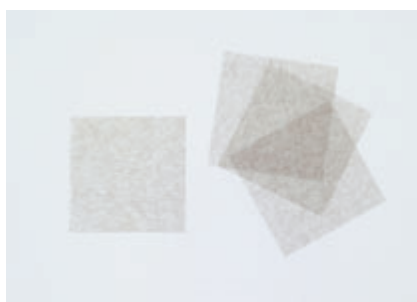


(Left) CT100-02-TP  
(Center) CT100-02-AMB  
(Right) CT100-02-CLR

Part No.	Material
CT100-02-AMB	Amber styrene
CT100-02-CLR	Clear styrene
CT100-02-PCBC	Black conductive polycarbonate
CT100-02-NV	Antistatic ABS alloy
CT100-02-TP	Antistatic ABS
CT100R-02-AMB	Amber styrene
CT100R-02-CLR	Clear styrene
CT100R-02-PCBC	Black conductive polycarbonate
CT100R-02-TP	Antistatic ABS

- For CT100 Series and CT100R Series trays.
- Size : 4" × 4"  
( 101.6mm × 101.6mm × 7.0mm T )

## Antistatic Polyethylene Film for CT100/CT100R Series Chip Tray

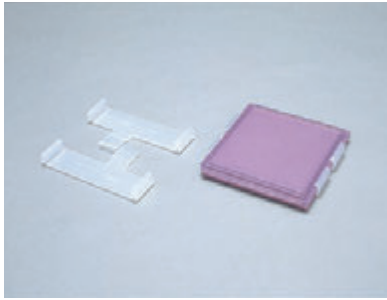


CU105B

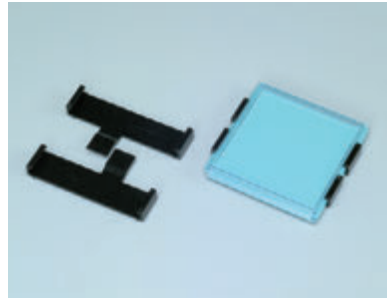
Part No.	CU105B
Material	Conductive Film (packaged in lots of 500 pcs)
Size ( H×L×T mm)	90.0mm sq. ± 1.0mm × 0.04mm T

- Antistatic polyethylene film will nest between CT100 Series trays, between CT100R Series trays or between chip trays and cover.
- Conductive fibers are uniformly dispersed throughout a polyethylene film to enhance antistatic performance.

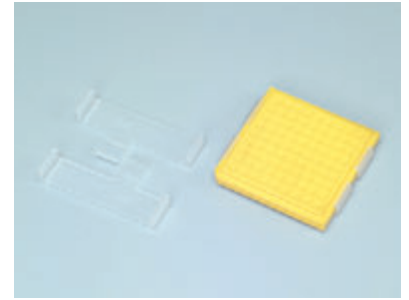
# CT100/CT100R Series Chip Tray Clips



CT100-CL01



CT100-CL01-PPBC



CT100-CL02

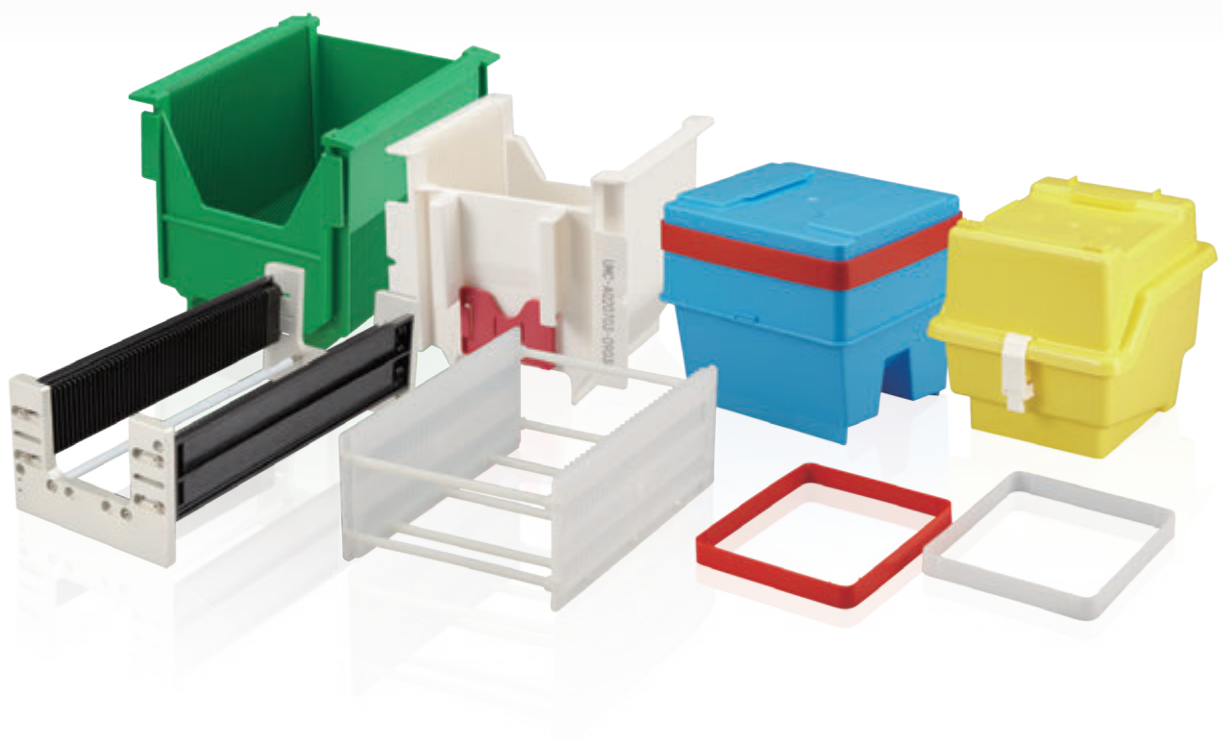
Part No.	Material	Capacity
CT100-CL01	Natural polypropylene	1 tray and 1 cover
CT100-CL01-PPBC	Black conductive polypropylene	1 tray and 1 cover
CT100-CL02	Natural polypropylene	2 trays
CT100-CL02-PPBC	Black conductive polypropylene	2 trays

- For CT100 Series or CT100R Series trays and covers.
- Securely holds tray on tray or cover on tray. Interlocking tabs press on the center of the tray to ensure good contact between tray and cover.

Clip is sold by the pair.

# Other Products

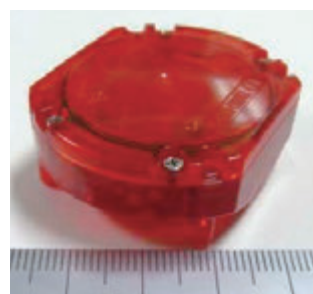
---



# Minimal Shuttle MS-A12, MS-B10



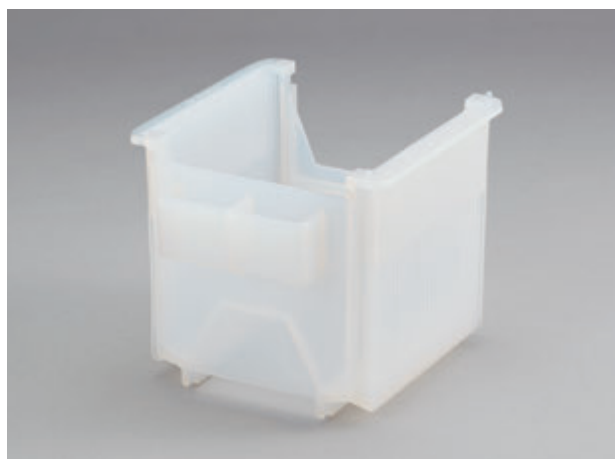
MS-A12



Part No.	Applicable Wafer	Main Dimension	Weight
MS-A12	0.5 inch wafer	Wafer stage : $\phi$ 26/H=7.6(mm)	Wafer stage : 3g
MS-B10	$\square$ 10mm wafer	Wafer dome : $\phi$ 42/H=12.1(mm)	Wafer dome : 17g(Total20g)

- Storage and transport container for  $\phi$  12.5mm wafer,  $\square$  10mm wafer.
- PLAD (Particle Lock Airtight Docking) System compatible.
- Magnetic lock/unlock mechanism for airtight inside.  
Restrains particle from open/close.
- Selected low outgassing antistatic material to restrain organic outgas and inorganic ion.

## CR125N-MF-WH PFA

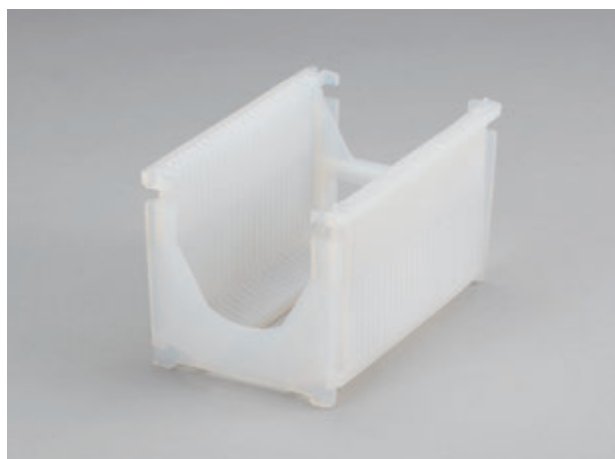


CR125N-MF-WH

Capacity	25
Dimension	152mm × 143mm × 140mm
D <sub>1</sub> dimension	14.52mm
Pocket pitch	4.76mm
Pocket flat	2.38mm

- Accommodates 125mm square substrate.
- H-shaped end for equipment interface.
- E-shaped handle on end wall.
- Wash slots in sidewalls.

## CR75C-02LF PFA



CR75C-02LF

Capacity	25
Dimension	94mm × 142mm × 85mm
D <sub>1</sub> dimension	13.97mm
Pocket pitch	4.76mm
Pocket flat	1.52mm

- Accommodates 80mm square substrate.
- H-shaped end for equipment interface.
- U-shaped end wall.
- Wash slots in sidewalls.

## PV156-50 Polycarbonate

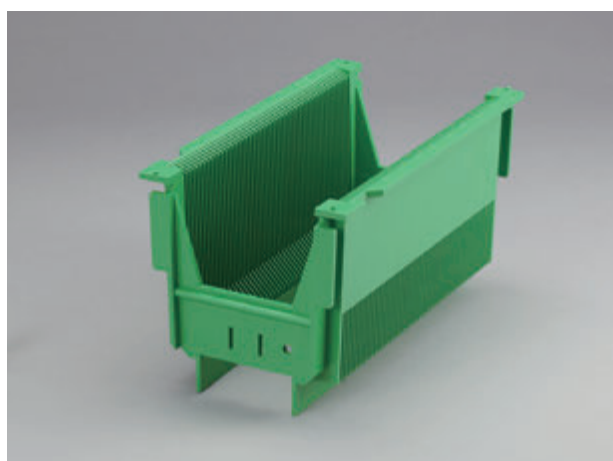


PV156-50

Capacity	50
Dimension	194mm × 233mm × 190mm
D <sub>1</sub> dimension	21.95mm
Pocket pitch	4.76mm
Pocket flat	1.52mm

- Accommodates 156mm square substrate.
- Design for equipment interface.
- Solid end wall.
- Side flange for reinforcement.
- Superior rigidity.
- Colorable.

## PV125-50 Polycarbonate



PV125-50

Capacity	50
Dimension	155mm × 277mm × 154mm
D <sub>1</sub> dimension	21.95mm
Pocket pitch	4.75mm
Pocket flat	1.55mm

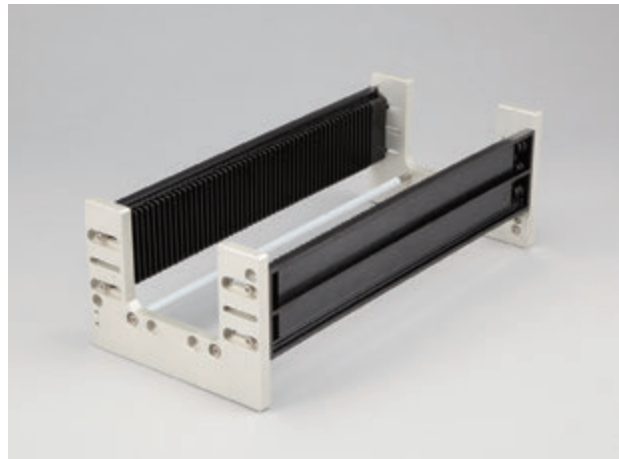
- Accommodates 125mm square substrate.
- Design for equipment interface.
- Identity tag can be attached on end wall.
- Side flange for reinforcement.
- Superior rigidity.
- Colorable.



# Assembly Carrier for square substrate



CJZ-05



CJZ-05 (Assembly example)

## CJZ-05-C001-B3NT-BLKNAT

[PEI-CNT (without window)]

## CJZ-05-C002-B3NT-BLKNAT

[PEI-CNT (with window)]

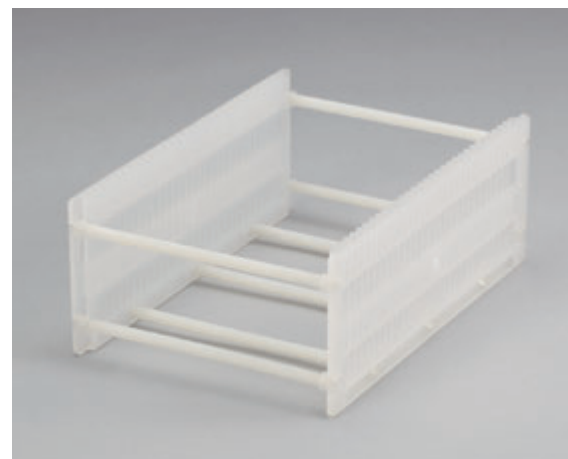
Capacity	50
Dimension	70mm × 340mm × 17mm
Pocket pitch	6mm
Pocket flat	7mm

- Side plate of conductive, heat resistant high performance resin.
- Accommodates various substrate sizes according to the shape of base plate.
- With or Without wash slot type selectable to meet your applications.

## FPA-001-PP Polypropylene

Capacity	30
Dimension	212mm × 82mm
Pocket pitch	6.35mm
Pocket flat	3.17mm

- Connecting 2 side rails and spacers provides carrier to accommodate various substrate sizes.
- Material for each part is changeable to meet your applications.



FPA-001-PP (Assembly example)

# Wafer Shipper



D9206

For 8" (200mm) [Dimension 247mm  $\Phi$  × 87mmH]

Size	Part No.	Description	Material
8" (200mm)	D9208-8	Box	Bottom : Polypropylene Cover : Polyethylene
	D9208-8L	Liner	Antistatic polyurethane foam
	D9208-8C-A	Cushion(20mm T )	
	D9208-8C-T	Cushion(7mm T )	
	D9208-8P	Paper(packaged in lots of 100pcs)	Antistatic Tyvek sheet

For 6" (150mm) /5" (125mm) [Dimension 179mm  $\Phi$  × 88mmH]

Size	Part No.	Description	Material
6" (150mm)	D9206-6	Box/Liner	Polypropylene Antistatic polyurethane foam
	D9206-6C-A	Cushion(20mm T )	Antistatic polyurethane foam
	D9206-6C-T	Cushion(7mm T )	
	D9206-6P	Paper(packaged in lots of 100pcs)	Antistatic Tyvek sheet
5" (125 mm)	D9206-5	Box/Liner	Polypropylene/Antistatic polyurethane foam
	D9206-5C-A	Cushion(20mm T )	Antistatic polyurethane foam
	D9206-5C-T	Cushion(7mm T )	
	D9206-5P	Paper(packaged in lots of 100pcs)	Antistatic Tyvek sheet

- Wafer shippers have replaceable antistatic polyurethane foam liners to retain wafers and seal securely, protecting wafers against damage from vibration in transit.
- Compact size minimizes shipping cost.
- Particle preventive type box and cover tape able for sealing.
- Accommodates 4" wafer changing liner.

# Box for Wafer with Guide-Ring



GRB-200-AS/GRB-300-AS

## GRB-200-AS

[Description For 200mm wafer]

Material	Antistatic polypropylene
Capacity	25
Dimension	291mm × 291mm × 308mm

## GRB-300-AS

[Description For 300mm wafer]

Material	Antistatic polypropylene
Capacity	25
Dimension	409mm × 409mm × 420mm

- Box for storage and transport of wafer with guide-ring (ring frame).
- Double pitch teeth allows to accommodate 13 wafers.
- Box cover and bottom are locked at 4 points.
- Construction of box cover and bottom and support facilitates cleaning.
- Stackable.

## WT-300 For 300mm wafer



WT-300

Description	Wafer tray for 300mm wafer
Dimension	327.5mm × 338.5mm × 42.5mm

- Amorphous material of low organic contamination.
  - Gasket for highly hermetic sealing.
  - Wafer contact of elastomer to eliminate damage to wafer.
  - Stackable.
  - Top cover available for A6 (105x148mm) size label.
- ※ Please contact us for antistatic type.

## PH800WS-1116 For 200mm wafer



PH800WS-1116

Description	Wafer tray for 200mm wafer
Dimension	226mm × 213mm × 20mm

- Amorphous material of less organic contamination.
- Slot for tweezers facilitate insertion and removal of wafer.
- Stackable.
- Wafer cushion replaceable.

## WT-75 For 75mm wafer



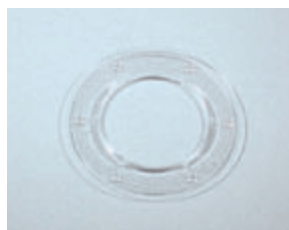
WT-75



Bottom cover  
WT-75-02-01-CP-NAT



Top cover  
WT-75-02-02-CP-NAT



Spring  
WT-75-02-03-CP-NAT



Latch  
WT-75-02-04-CP-NAT  
※ Non-standard color example

Description	Wafer Tray for 3" wafer
Dimension	101mm (Sq.) × 12mm(T)

- Using very low outgassing amorphous resin.
  - Cushion has small point that contacts the backside of wafer to minimize particle generation.
  - Unnecessary to turn the top cover eliminates the potential of particle generation and is compatible with automatic handling.
  - Latch mechanism facilitates opening/closing operation.
  - Suitable for shipping the compound semiconductor wafer.
- ※ Please contact us for other sizes.

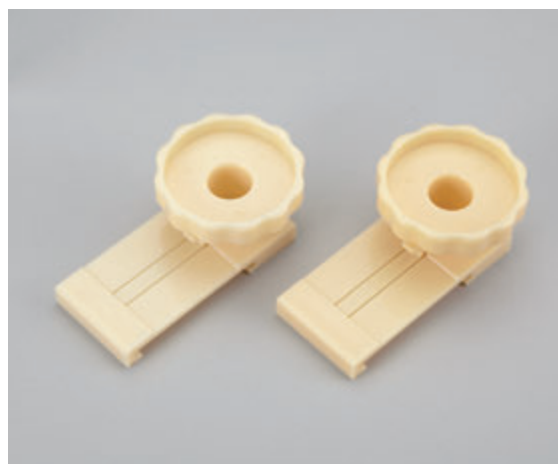
## CH300-01 Dedicated handle for CR300U-02LM-R (ABS)

- Dedicated handle for CR300U-02LM-R Open Cassette.
- Slide and mount on the side flange of the cassette.

Handle is sold by the pair.



Open Cassette with Handle



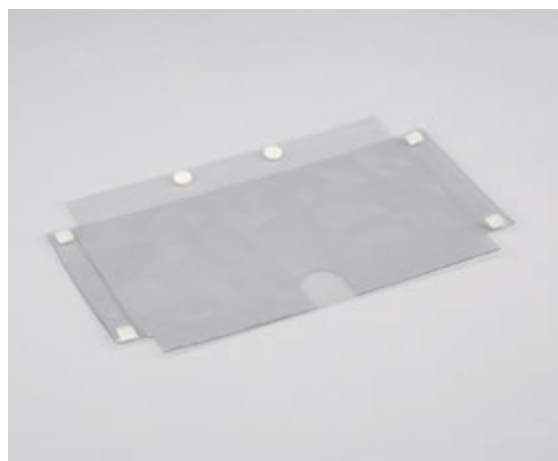
CH300-01

## TR200-H6 Traveler

- Dedicated for BX200 series. Traveler to accommodate process control card.
- Attached onto the top of BX200.



Box with Traveler



TR200-H6

## BX200N2 Card for box

## CC-08-01 Card holder for box

- Card for box and dedicated card holder.
  - Can be attached to various boxes.
- ※ Please contact us for details.



Box with Card Case



BX200N2(above) CC-08-01(below)

## BX150-NV-RS Run Sheet case

Dimension 178mm × 150mm × 20mm

- Case to accommodate process control card.



BX150-NV-RS

## Barcode Label Barcode Label

Material PFA

- Can be attached to various carriers and boxes.



Carrier with Barcode Label

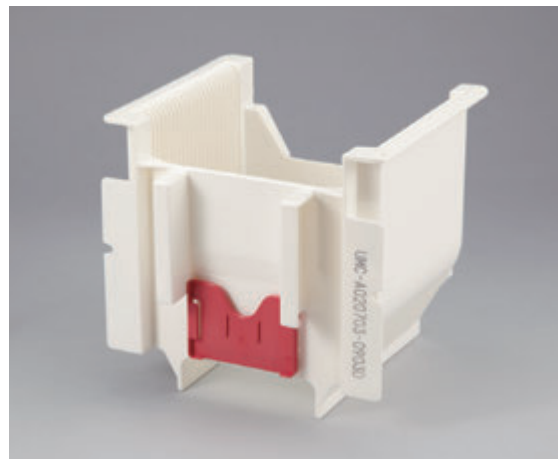


Barcode Label

## Card Holder Card holder

Part No.	Material	Standard colors
CC-02-B3	Bishop-3 (conductive high performance resin)	Black
CC-02	antistatic ABS	Natural
CC-02-PA	antistatic Polypropylene	Natural
CC-05-SF	Stat Free-1 (antistatic PBT alloy)	Natural

- Can be attached to various carriers and boxes.
  - Minimum order quantity is 50.
- ※ Please contact us for order for less than minimum order quantity or non-standard colors.



Carrier with Card Holder



## Card Case Card Case

Part No.	Material	Standard colors
BX200DS-NV-6	Stat Free-2 (antistatic ABS alloy)	Clear (bluing)
BX200DS-PA-6	antistatic Polypropylene	Natural
BX200DS-PB-6	conductive Polypropylene	Black

- Storage box for 200mm wafer carrier.
  - Can be attached to BX200 series.
  - Minimum Order Quantity is 50.
- ※ Please contact us for order for less than minimum order quantity or non-standard colors.

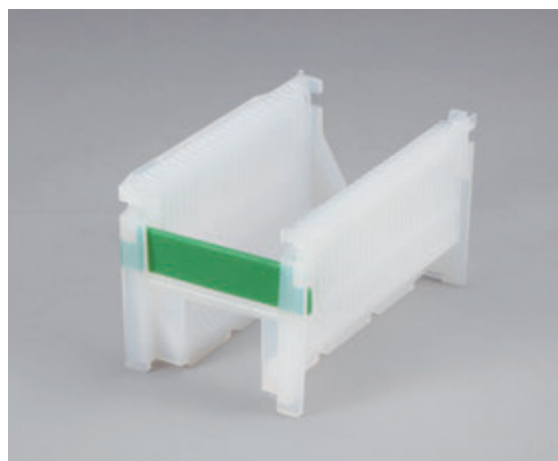


Box with Card Case

## ID75-01 ID Tag (For 75mm wafer carrier)

Material	PFA
Size	20mm × 86mm × 3mm

- Carrier for 75mm wafer.
  - Can be attached to CR75C - 01LF (P67) and CR75-AFB (P68).
  - Minimum Order Quantity is 100.
- ※ Please contact us for order for less than minimum order quantity.



ID75-01 (Carrier with ID Tag)

## IP05 ID button

Material	PFA
----------	-----

- Can be attached to end wall of various carriers.
  - Minimum Order Quantity is 100.
  - ID button is available with numbering from "0" ~ "9" or without numbering.
- ※ Please contact us for order for less than minimum order quantity.



Carrier with ID Button



IP05



## LP-01 Latch

- Can be attached to the top and bottom separate type box.



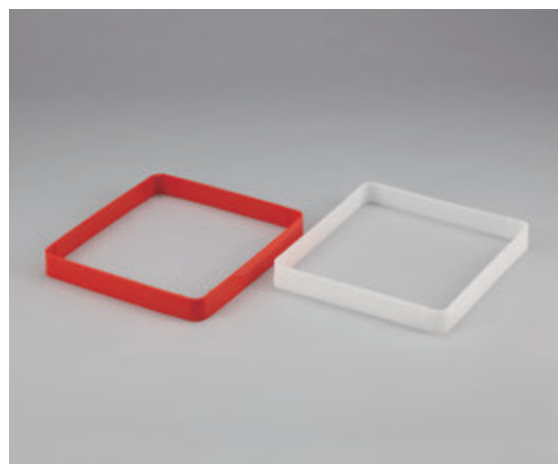
LP-01 (Box with Latch)

## BX150-PA-ID-B01 ID Band

- Can be attached to BX150 (P77) .



Box with ID Band



BX150-PA-ID-B01

## ID-03-01-SF-S00 ID Tag

Size	65mm × 31mm × 0.9mm
------	---------------------

- Visible ID Tag fusion-bonded on end wall of wafer carrier.



ID-03-01-SF-S00

# Technical Information



# General Properties of Resins Used in Dainichi

DAINICHI SHOJI K.K.

This section discusses general properties of materials used in Dainichi Products. General properties are given to help your better understand why a particular resin was chosen for product use. Please contact our sales personnel for more information about specific properties.

## Fluorocarbon Resins and Engineering Plastics

### PFA

perfluoroalkoxy

Has excellent heat resistance and is resistant to virtually all chemicals and solvents comparable to PTFE. In fluoropolymer resins, PFA is not subject to creep and has excellent stress crack resistance and outstanding anti-stick property. Because of its exceptional purity, PFA does not pose an outgassing problem.

### PC

polycarbonate

Is a rigid, transparent polymer with high impact strength that is also available with transparent colors to control UV transmittance. PC has good dimensional stability and is generally compatible with weak acids, bases, oils and alcohol at room temperature. PC is attacked by organic solvents and concentrated acids and bases at elevated temperatures.

### PEEK

polyetheretherketone

Is a cream colored polymer which can be supplied in a limited range of colors. PEEK has excellent flexural and tensile properties at very high temperature. PEEK is tough and abrasion resistant. PEEK shows low creep property and is extremely resistant to attack by a very wide range of organic and inorganic chemicals. The only common solvents that attack PEEK are concentrated sulfuric acid and concentrated hydrofluoric acid.

### PES

polyethersulfone

Is a amber amorphous resin and superior in mechanical and chemical property. PES has high level heat resistance, hot-water resistance and chemical resistance, and is used, due to its higher transparency, also in the case where high performance is required instead of polycarbonate. PES is used in the semiconductor application as low outgassing and low eluting clean material.

### PEI

polyetherimide

PEI is a amorphous resin having high strength and rigidity, hydrolysis resistance and weather resistance, and is used in the applications where mechanical property in high temperature range is required due to its superior heat resistance. Also has wide chemical resistance to weak acid and weak alkali, etc.

General Purpose Resins

PP

polypropylene

Is a translucent or transparent polymer that is highly flexible. PP is durable with good impact strength. PP has good resistance to strong mineral acids and bases, alcohols and some solvents. PP has poor resistance to chlorinated and aromatic solvents. concentrated hydrochloric acid and hydrogen peroxide at elevated temperature.

PE

polyethylene

Is available in various degrees of crystallinity, including LDPE (low density polyethylene), LLDPE (linear low density polyethylene) and HDPE (high density polyethylene). These polyethylene materials have chemical resistance similar to polypropylene. Strong oxidizing agents will eventually cause embrittlement. Some solvents will cause softening and swelling of the resin.

PS

polystyrene

Is a transparent, rigid, brittle polymer with excellent dimensional stability. PS is subject to stress crack and some of the high impact grades incorporate butadiene for added impact strength. PS is resistant to water, weak acids and bases, and detergent, but PS is attacked by most organic solvents.

ABS

acrylonitrile butadiene styrene

Is a rigid, tough polymer with good impact strength. ABS is available in transparent and colored grades. ABS is resistant to most acids, bases, salt solutions and many alcohols, but ABS is attacked by most organic solvents.

# General Properties of Resins Used in Dainichi Products

DAINICHI SHOJI K.K.

## Static Protective Materials

### Bishop-3

conductive high performance resin

Superior in heat resistance, rigidity and dimensional stability. Suitable for use in high temperature applications. Low outgassing feature ideal for transport and storage of wafer. Used for molding wafer carrier.

### Stat Free-1

permanent antistatic PBT alloy

Prevents static protective property from decay unlike the conventional materials with an antistatic additive. Metal-free conductive material eliminates contamination to wafer. Colorable and used for molding wafer carrier and storage box.

### Stat Free-2

permanent antistatic ABS

Polymerized high purity ABS resin with conductive polymer offers permanent static protective property. Both clear and colored storage boxes and mask cases available.

### antistatic polypropylene

Is an antistatic polypropylene developed for use in highly integrated IC silicon wafer carrier. A blend of high purity polypropylene and an antistatic additive. Metal content is minimized. Used for molding wafer carrier and storage box.

### antistatic ABS

Because of inherent antistatic property, has permanent and stable static protective performance. Low outgassing material suitable for transport and storage of wafer. Used for molding chip trays.

### conductive polycarbonate

Polycarbonate blended carbon has conductivity and enhances strength of molded product. Not affected by ambience and instantaneously dissipates static charge by grounding. Low outgassing material suitable for transport and storage of wafer. Used for molding wafer carrier and chip tray.

# Physical Properties of Materials

DAINICHI SHOJI K.K.

Item	Test Method	Unit	StatFree-1	StatFree-2	Bishop-3	Antistatic Polypropylene
Specific Gravity	D792/23℃		1.28	1.1	1.29	0.9
Water Absorption	D570/23℃	%	0.24		0.29 ~ 0.3	
Molding Shrinkage	D955	%	2.5	0.5	0.5	1.9
Tensile Strength	D638/23℃	Kg/cm <sup>2</sup>	490	380	1,036	340
		Mpa	48	37.3	101.6	33.3
Elongation	D638/23℃	%	320	25	12	>500
Flexural Strength	D790/23℃	Kg/cm <sup>2</sup>	683	540	1,527	—
		Mpa	67	53	150	42.2
Flexural Modulus	D790/23℃	× 10 <sup>3</sup> Kg/cm <sup>2</sup>	18.4	17	34.3	13.5
		Mpa	1,800	—	3,364	—
Izod Impact Strength	D256/23℃ With Notch	Kg · cm/cm	6.0	15(1/4")	3.6(1/8 ")	7.5
		J /m	80.0	—	35.3	—
Rockwell Hardness	D758		M70	—	—	R97
Tabor abrasion	D1044	mg	11	—	—	19
Deflection Temperature under Load	D648 (0.455Mpa)	℃	150	85	—	—
	D648 (1.820Mpa)	℃	—	—	200	106
Coefficient of Linear Expansion	TMA 法	× 10 <sup>-5</sup>	12.7 ~ 13.0	—	—	8.6 ~ 11.2
Surface Resistivity	D257	Ω /cm <sup>2</sup>	< 10 <sup>13</sup>	10 <sup>12</sup>	< 10 <sup>12</sup>	< 10 <sup>13</sup>

All above values are the representative values taken under the conditions provided by ASTM, not the standard values.

Technical Info

Physical Properties of Materials

FOUP Carriers Handles

Box

RSP

Mask Case

Chip Tray

Other Products

Technical Info

# Physical Properties of Fluorocarbon Resins

DAINICHI SHOJI K.K.

Item	Unit	PFA perfluoroalkoxy	FEP fluorinated ethylene-propylene
Structure		$  \begin{array}{ccccccc}  & \text{F} & \text{F} & \text{F} & \text{F} & \text{F} & \text{F} \\  &   &   &   &   &   &   \\  - & \text{C} & - \text{C} & - \text{C} & - \text{C} & - \text{C} & - \text{C} - \\  &   &   &   &   &   &   \\  & \text{F} & \text{F} & \text{O} & \text{F} & \text{F} & \text{F} \\  & & &   & & & \\  & & & \text{Rf} & & &   \end{array}  $	$  \begin{array}{ccccccc}  & \text{F} & \text{F} & \text{F} & \text{CF}_3 & \text{F} & \text{F} \\  &   &   &   &   &   &   \\  - & \text{C} & - \text{C} & - \text{C} & - \text{C} & - \text{C} & - \text{C} - \\  &   &   &   &   &   &   \\  & \text{F} & \text{F} & \text{F} & \text{F} & \text{F} & \text{F}  \end{array}  $
Density	g/cm <sup>3</sup>	2.12-2.17	2.15-2.17
Melting Point	°C	310	260
Maximum Operating Temperature (continuous)	°C	260	200
Tensile Strength	MPa	25-35	20-30
Elongation	%	300-350	250-330
Flexural Modulus	GPa	0.54-0.64	0.55-0.67
Tensile Modulus	GPa	0.31-0.35	0.32-0.36
Hardness	Rockwell [R scale]	R50	R50
	Shore [D scale]	D62-66	D60-65
Specific Heat	10 <sup>3</sup> J/kg · k	1.0	1.2
Heat Conductivity	W/m · k	0.19	0.2
Volume Resistivity	Ω /cm (50% RH, 23°C)	>10 <sup>18</sup>	>10 <sup>18</sup>
Dielectric Strength (short period)	MV/m (3.2mm T )	20	22
Dielectric Constant 60Hz	—	2.1	2.1
Dielectric Dissipation Factor 60Hz	—	0.0002	0.0002
Water Absorption	% (24hr)	0.01	0.01
Coefficient of Dynamic Friction	(0.69MPa, 3m/min)	0.2	0.3

ETFE ethylene tetrafluoroethylene	ECTFE ethylene chlorotrifluoroethylene	PTFE polytetrafluoroethylene	PCTFE polychlorotrifluoroethylene	PVDF polyvinylidene fluoride
$\begin{array}{c} \text{F} & \text{F} & \text{H} & \text{H} \\   &   &   &   \\ -\text{C}-\text{C}-\text{C}-\text{C}- \\   &   &   &   \\ \text{F} & \text{F} & \text{H} & \text{H} \end{array}$	$\begin{array}{c} \text{F} & \text{Cl} & \text{H} & \text{H} \\   &   &   &   \\ -\text{C}-\text{C}-\text{C}-\text{C}- \\   &   &   &   \\ \text{F} & \text{F} & \text{H} & \text{H} \end{array}$	$\begin{array}{c} \text{F} & \text{F} & \text{F} & \text{F} & \text{F} & \text{F} \\   &   &   &   &   &   \\ -\text{C}-\text{C}-\text{C}-\text{C}-\text{C}-\text{C}- \\   &   &   &   &   &   \\ \text{F} & \text{F} & \text{F} & \text{F} & \text{F} & \text{F} \end{array}$	$\begin{array}{c} \text{F} & \text{Cl} & \text{F} & \text{Cl} & \text{F} & \text{Cl} \\   &   &   &   &   &   \\ -\text{C}-\text{C}-\text{C}-\text{C}-\text{C}-\text{C}- \\   &   &   &   &   &   \\ \text{F} & \text{F} & \text{F} & \text{F} & \text{F} & \text{F} \end{array}$	$\begin{array}{c} \text{H} & \text{F} & \text{H} & \text{F} & \text{H} & \text{F} \\   &   &   &   &   &   \\ -\text{C}-\text{C}-\text{C}-\text{C}-\text{C}-\text{C}- \\   &   &   &   &   &   \\ \text{H} & \text{F} & \text{H} & \text{F} & \text{H} & \text{F} \end{array}$
1.73-1.74	1.68-1.69	2.13-2.20	2.10-2.20	1.75-1.78
270	245	327	220	151-178
150	150	260	120	150
38-42	41-48	20-35	31-41	30-70
300-400	200-300	200-400	80-250	20-370
0.90-1.20	0.66-0.69	0.53-0.58	1.25-1.79	0.60-1.99
0.70-0.85	1.55-1.70	0.40-0.60	1.03-2.10	0.37-2.58
R50	R50	R20	R80	R93-116
D67-78	D53-57	D50-55	D75-80	D64-79
2.0	2.0	1.0	0.9	1.2
0.24	0.16	0.23	0.22	0.17
$>10^{17}$	$>10^{15}$	$>10^{18}$	$>10^{18}$	$>10^{15}$
16	20	19	22	11
2.6	2.6	2.1	2.6	8.4
0.0006	0.0005	0.0002	0.0012	0.049
0.03	0.01	0.01	0.01	0.03
0.4	0.4	0.1	0.4	0.4

Note : ( ) shows Test Condition Reference : Fluorocarbon Resin Handbook  
(Japan Fluorocarbon Resin Industry Association)

FOUP  
Carriers  
Handles

Box

RSP

Mask  
CaseChip  
TrayOther  
ProductsTechnical  
Info



# DAINICHI SHOJI K.K.

<http://www.dainichi-shoji.co.jp>

Represented by:



## CCT Europe B.V.

Bindersestraat 31-D,  
5701SX Helmond,  
The Netherlands.

✉ [cct@cct-europe.com](mailto:cct@cct-europe.com)

☎ +31 (0)492 780178

☁ [www.cct-europe.com](http://www.cct-europe.com)