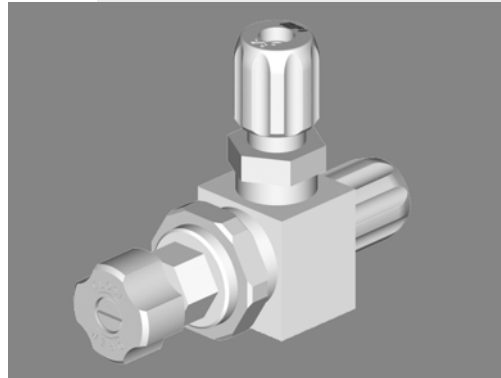


PMV Series precision metering valves provide optimum resolution and linearity for control and adjustment of flow settings.



PMV Precision Metering Valve

Precise Fluid Control and Adjustment

- 100% functional pressure and leak testing—superior performance
- Patented features provide high resolution and linearity allowing fine adjustments for precise control
- Design with different surfaces for metering and shut-off—prevent deformation of metering surfaces.
- Failsafe valve stem design prevents over-tightening or over-loosening

v a l v e s

Operation

The PMV metering pin is held securely in the valve body. This design feature protects the metering pin against misalignment due to pressure changes. Once the flow is set, the valve performs like a fixed orifice.

Specifications

MATERIALS

- Wetted parts:
PTFE and PFA
- Non-wetted parts:
PVDF and polypropylene

OPERATING

- Maximum temperature: 120°C (248°F)
- Maximum pressure: 100 PSI

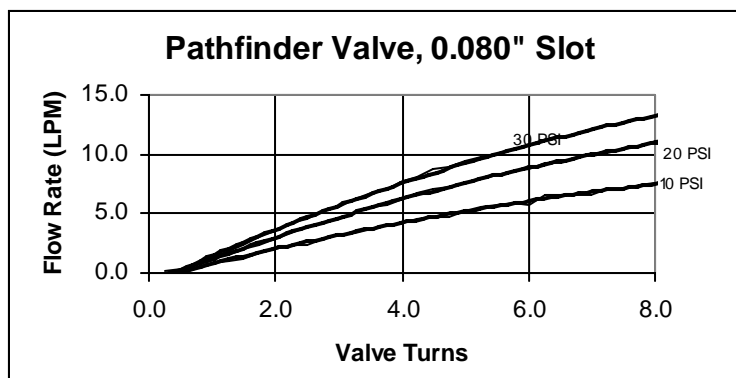
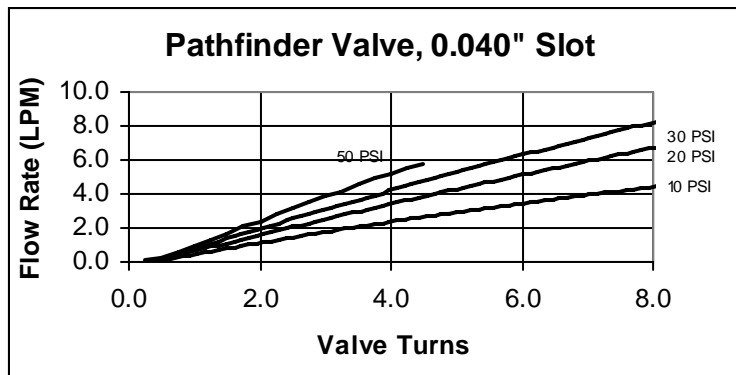
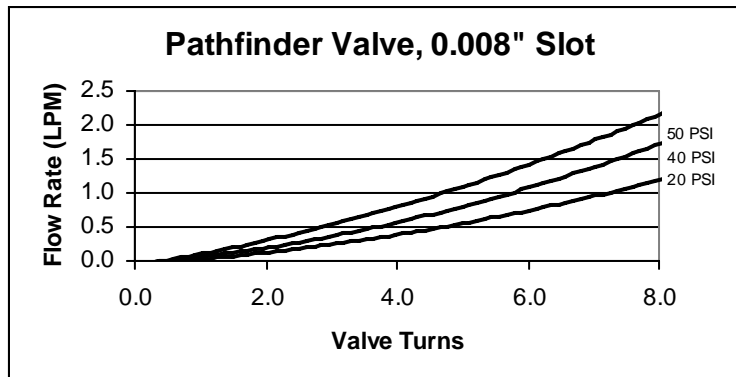
Configuration Option

STYLE

- Inline
- Angle

CONNECTION SIZES

- 1/4", 3/8", 1/2", 3/4" and 1" fine thread flare
- 1/4", 3/8", 1/2", 3/4" and 1" Pillar Super 300®



Consult factory for other graphs.

Ordering Information

To order, select a valve slot size, inlet size, outlet size and style from options below.

Complete Part Number = Valve Slot Size—Inlet Outlet—Style (Example: 612-6F6F-95)

LOW AND MEDIUM FLOW

VALVE SLOT SIZE	
0.008"	1
0.040"	2
0.080"	3
0.125"	4

FITTING SIZE AND TYPE	
<i>F=Flare S=Pillar Super 300</i>	
1/4"	4F
	4S
3/8"	6F
	6S
1/2"	8F
	8S

STYLE
Angle = blank
Inline = 95

61X-XXXX-XX

HIGH FLOW

VALVE SLOT SIZE	
0.125"	1
0.250"	2
0.375"	3

FITTING SIZE AND TYPE	
<i>F=Flare S=Pillar Super 300</i>	
1/2"	8F
	8S
3/4"	12F
	12S
1"	16F
	16S

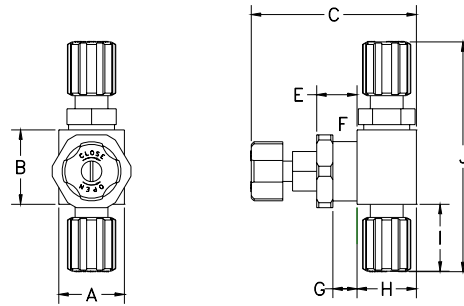
STYLE
Angle = blank
Inline = 95

62X-XXXX-XX

Installation Drawings

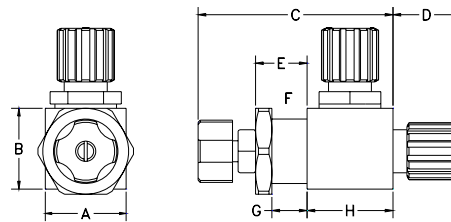
LOW AND MEDIUM FLOW, INLINE

		Inches	mm
A	Width	1.25	31.8
B	Height	1.41	35.8
C	Valve open	3.70	94.0
	Valve closed	3.15	80.0
D	3/8" flarenut	NA	NA
E	Dimension	0.77	19.6
F	Panel hole dia.	1.19	30.2
G	Panel thickness	0.46	11.7
H	Depth	1.13	28.7
I	3/8" flarenut	1.27	32.3
J	Flr-nut to flr-nut	4.36	110.7



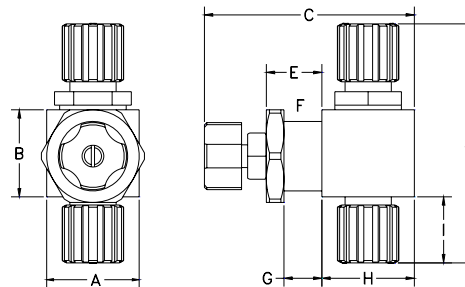
LOW AND MEDIUM FLOW, ANGLE

		Inches	mm
A	Width	1.25	31.8
B	Height	1.41	35.8
C	Valve open	3.70	94.0
	Valve closed	3.15	80.0
D	3/8" flare nut	1.25	31.8
E	Dimension	0.77	19.6
F	Panel hole dia	1.19	30.2
G	Panel thickness	0.46	11.7
H	Depth	1.13	28.7
I	3/8" flarenut	NA	NA
J	Flr-nut to flr-nut	NA	NA



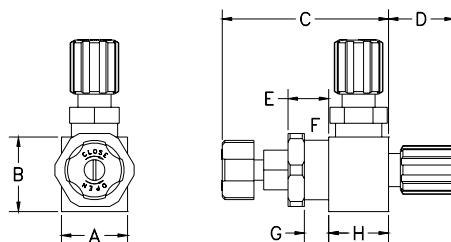
HIGH FLOW, INLINE

		Inches	mm
A	Width	2.00	50.8
B	Height	1.88	47.8
C	Valve open	5.44	138.2
	Valve closed	4.54	115.3
D	3/8" flarenut	NA	NA
E	Dimension	1.20	30.5
F	Panel hole dia	1.56	39.6
G	Panel thickness	0.82	20.8
H	Depth	2.00	50.8
I	3/8" flarenut	1.43	36.3
J	Flr-nut to flr-nut	5.16	131.1



HIGH FLOW, ANGLE

		Inches	Mm
A	Width	2.00	50.8
B	Height	1.88	47.8
C	Valve open	5.44	138.2
	Valve closed	4.54	115.3
D	3/8" flarenut	1.58	40.1
E	Dimension	1.20	30.5
F	Panel hole dia.	1.56	39.6
G	Panel thickness	0.82	20.8
H	Depth	2.00	50.8
I	3/8" flarenut	NA	NA
J	Flr-nut to flr-nut	NA	NA



*Pillar Super 300 dimensions available upon request.

Futurestar Corporation • 6529 Cecilia Circle • Bloomington MN 55439

952 942 8388 • 952 942 8661 fax • www.futurestarcorp.com • U.S. Patents: 5565631, 5549277, 5381826, 5078004 • Others pending



Futurestar®, Pathfinder®, Odyssey® and Sentinel® are registered trademarks of Futurestar Corp. • Super 300 Type Pillar Fitting® is a trademark of NIPPON PILLAR PACKING CO., LTD.

©2005 Futurestar Corp., Printed in the USA, FS0009-0405, April 2005